



#18358

1 Bedroom Apartment in Agios Athanasios Limassol (18358)

📍 Agios Athanasios, Limassol

€350,000 +VAT





Overview

Specifications

Bedrooms



Bathrooms



Covered

53.5 m²

Type	Apartment
Toilets	1
Covered veranda	23 m²
Status	Under construction
Year of construction	2026

Furnished	Unfurnished
Structure	Concrete
Facade	Concrete
Communal charge frequency	Monthly
Energy efficiency rating	A

Description

1 Bedroom Apartment in Agios Athanasios Limassol

Price: €350,000 + VAT

| Year of Completion: 2026 | Move-in Ready: in 2026

Discover the perfect blend of luxury and modern living in this 1-bedroom apartment located in the highly desirable Agios Athanasios area of Limassol. Designed with meticulous attention to detail, this development offers a contemporary living experience with top-tier specifications and convenient amenities.

Key Features:

Size: 53.5 m² covered area, plus a 23 m² covered veranda

Bedrooms: 1 spacious, bright bedroom

Bathrooms: 1 modern bathroom

Living Areas: Open-plan kitchen and dining area, bright living room with city views

Parking: 1 covered parking space per apartment

Facilities: Communal swimming pool, gym, playroom, and elevator for added convenience

Energy Efficiency: Rated A, with thermal insulation and solar water heating system

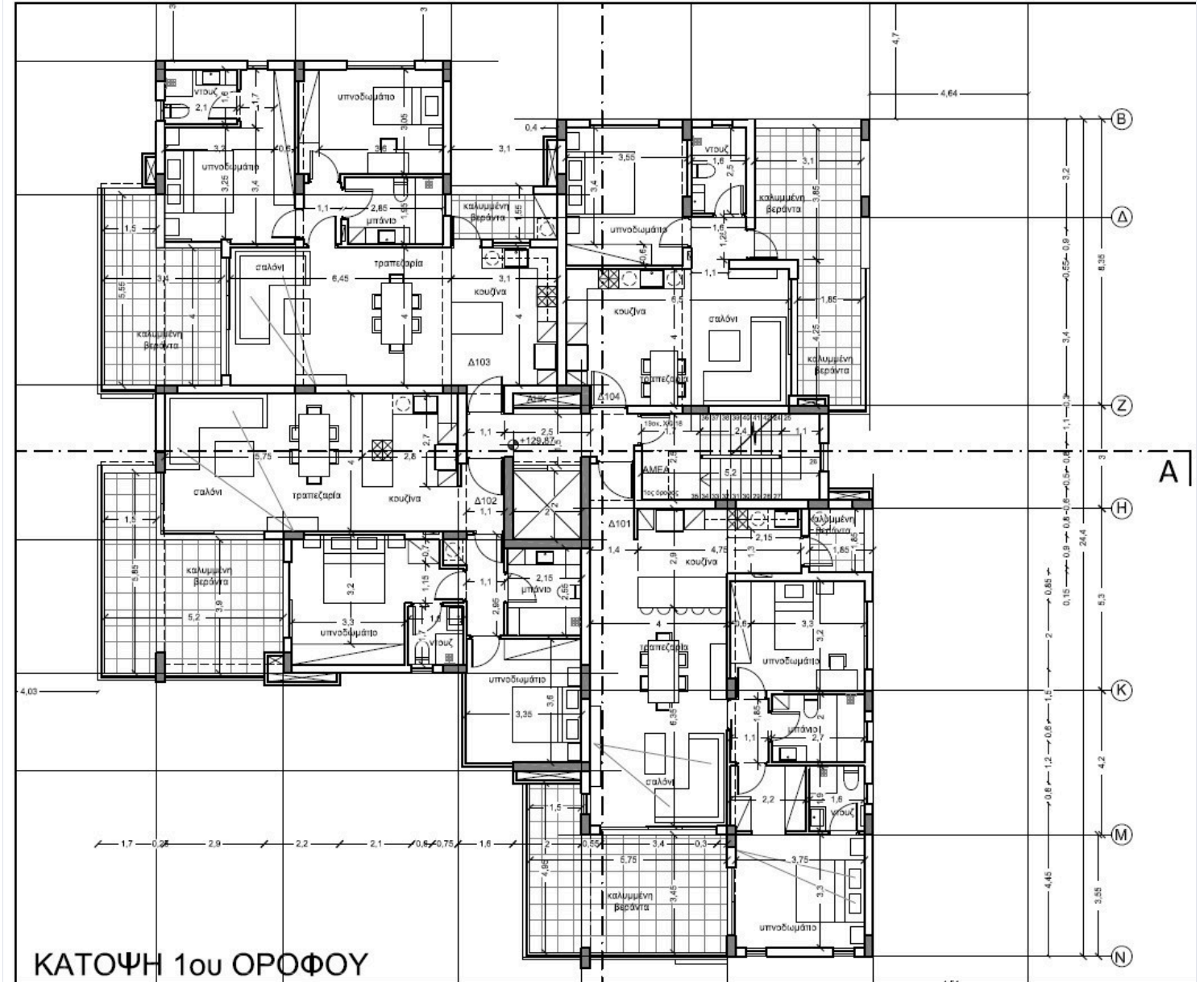
Furnishing: Unfurnished, giving you the freedom to create your own style

High-Quality Finishes: Luxury specifications including granite countertops, ceramic tiles, double glazing, and modern design elements

Eco-Friendly: Solar photovoltaic panels (provision) and a pressurized water system



Floor plans



Additional information

Facilities

Aircondition, Provision

Gym

Parking, Covered

Solar water heater

Elevator

Heating, Provision

Pool, Communal

Storage

Gated complex

Outdoor shower

Solar photovoltaic panels (provision)

Features

Balcony

CCTV (provision)

Combined kitchen and dining area

Easy access to main roads

Investment opportunity

Near amenities

Play room

Shower

Veranda, large

Bright

Ceramic tiles

Connected to electric mains

En suite shower

Luxury specifications

Open plan

Pressurized water system

Thermal insulation

CCTV

City view

Double glazing

Granite countertops

Modern design

Pipe-in-pipe plumbing system

Rental potential

Veranda

Distances

Amenities

 300 m

Airport

 55 km

Sea

 4 km

Public transport

 950 m

Schools

 300 m


Resort

 4.5 km

Contact us



Stavroula Michail

 (+357) 99810880

 stavroulamichail.lextrus@gmail.com

