



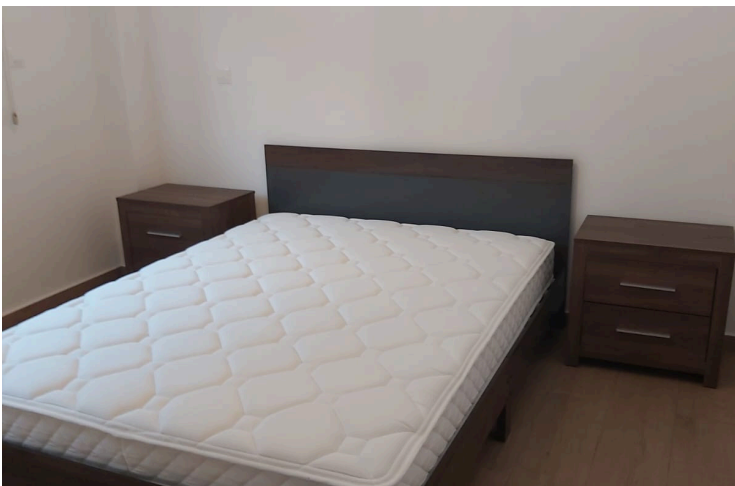
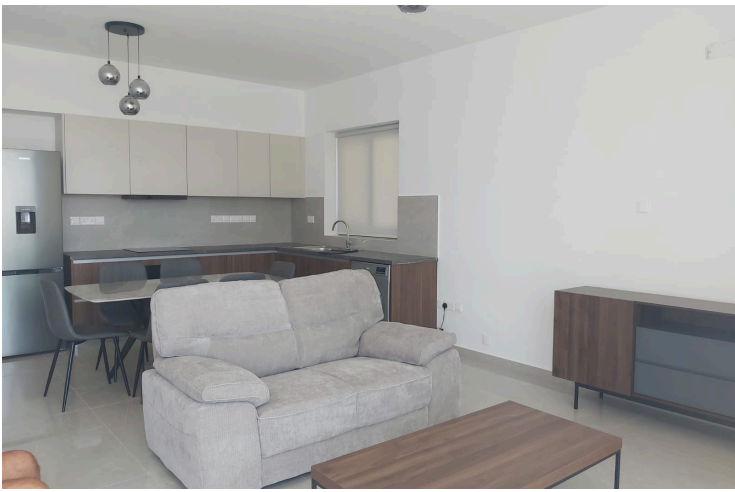
#18333

Modern Two Bedroom Sea View Apartment Germasogeia

📍 Germasogeia, Limassol

€1,900 /month





Overview

Specifications

Bedrooms

 2

Bathrooms

 1

Covered

 90 m²

Type **Apartment**

Toilets **1**

Status **Key ready**

Year of construction **2024**

Furnished **Fully furnished**

Energy efficiency rating  **B**

Description

Modern 2-Bedroom Apartment with Panoramic Sea & City Views

Contemporary 2-bedroom apartment situated in an elevated residential area offering breathtaking panoramic views of the city skyline and the Mediterranean Sea. Located in a modern low-density development, the property combines sleek architectural design, comfort, and privacy in one of the area's most desirable hillside neighborhoods.

The building features clean modern lines with high-quality exterior finishes in neutral tones, large double-glazed windows for abundant natural light, and thoughtfully designed outdoor spaces. The elevated position provides uninterrupted views while remaining only a short drive from the city center, beaches, schools, shops, and everyday amenities.

The apartment is ideal for both residential living and investment, offering a peaceful setting with excellent accessibility. Residents benefit from contemporary construction standards, energy-efficient design, and a stylish modern environment.

Property Highlights

- * Panoramic sea and city views
- * Modern architectural design
- * Bright interiors with large windows
- * Quiet elevated residential location
- * Easy access to the city center and coastline
- * High-quality construction and finishes
- * Ideal for permanent residence or investment



Additional information

Facilities

Aircondition, Split system

Gated complex

Parking, Uncovered

Solar water heater

Storage

Features

Bath

Ceramic tiles

City view

Combined kitchen and dining area

Courtyard

Double glazing

Easy access to highway

Easy access to main roads

Fitted wardrobes

Ground floor bedroom

Kitchen appliances

Laminate flooring

Modern design

Municipal water/sewage

Next to green area

Open plan

Panoramic view

Quiet area

Roller blinds

Sea view

Shower

Spacious rooms

Tile flooring

Veranda

Veranda, front

Distances

Amenities

 1 km

Airport

 60 km

Sea

 4.5 km

Public transport

 1 km

Schools

 2 km


Resort

 5 km

Contact us



Elena Sokil

 (+357) 95759512

 lenasokil0@gmail.com

