



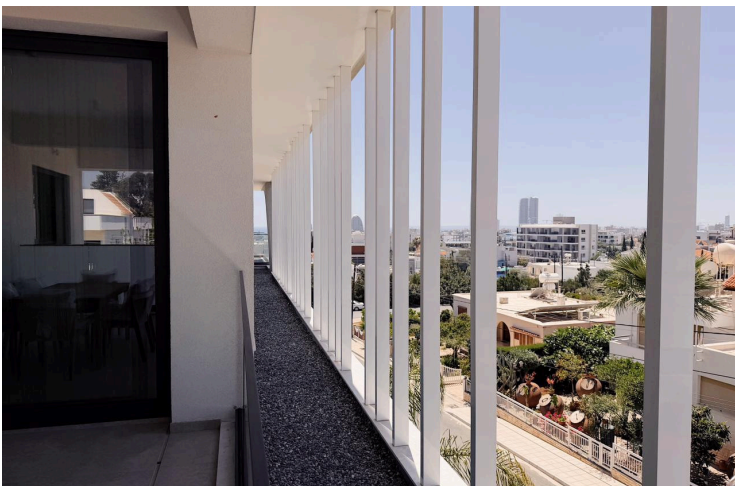
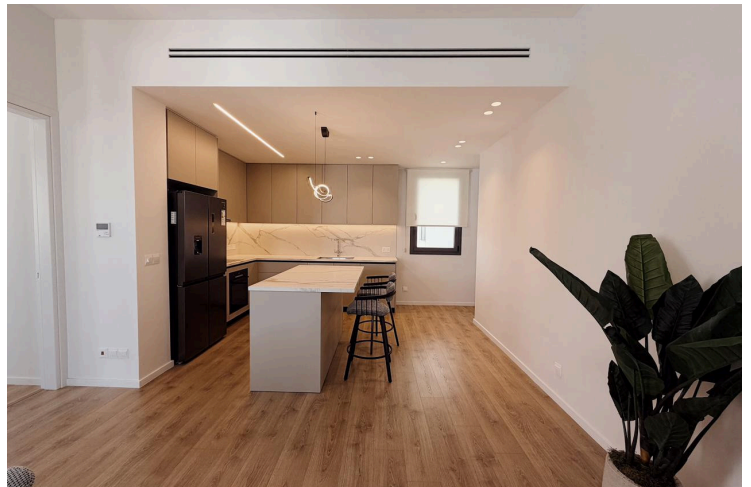
#18303

# Modern Two Bedroom Apartment for Rent in Agios Athanasios

📍 Agios Athanasios, Limassol

€2,950 /month





# Overview

## Specifications

Bedrooms



2

Covered

120 m<sup>2</sup>

Type	<b>Apartment</b>
Showers	<b>2</b>
Toilets	<b>2</b>
Status	<b>Key ready</b>

Year of construction	<b>2026</b>
Furnished	<b>Fully furnished</b>
Energy efficiency rating	<b>B+</b>

## Description

Brand New Premium 2-Bedroom Apartment | Columbia Area, Limassol

Located in the highly sought-after Columbia area of Agios Athanasios, this brand-new 2-bedroom apartment offers modern design, energy efficiency, and excellent accessibility in one of Limassol's most desirable residential neighborhoods.

Completed in 2026 and ready for its first tenants, the apartment combines elegant contemporary interiors with high-quality finishes and practical everyday comfort.

### Property Details

- \* 120 m<sup>2</sup> total covered area
- \* 95 m<sup>2</sup> internal living space
- \* 25 m<sup>2</sup> covered veranda with open views
- \* 2 spacious bedrooms
- \* 2 modern bathrooms
- \* 2nd floor
- \* Fully furnished
- \* Covered private parking
- \* Private storage room
- \* Elevator access
- \* Full air conditioning in all rooms
- \* Energy Efficiency Rating: B+



# Additional information

## Facilities

Aircondition, Split system

Elevator

Gated complex

Parking, Covered

Solar water heater

Storage

## Features

Alarm system

Balcony, back

Balcony, front

Bright

City view

Combined kitchen and dining area

Double glazing

Easy access to highway

Easy access to main roads

Electric car charger

Elevated

En suite shower

Energy efficient doors/windows

Entrance gate, automated

Entrance hall

Fitted wardrobes

Floor-to-ceiling windows

Guest WC

Kitchen appliances

Kitchen island

Laminate flooring

Modern design

Municipal water/sewage

Near amenities

Near bus route

Next to green area

Open plan

Panoramic view

Quiet area

Roller blinds

Shower

Spacious rooms

Tile flooring

Utility room

Veranda

Wooden flooring

## Distances

Amenities

 300 m

Airport

 64 km

Sea

 1.8 km

Public transport

 300 m

Schools

 500 m

Resort

 4 km

## Contact us



**Elena Sokil**

 (+357) 95759512

 lenasokil0@gmail.com

