



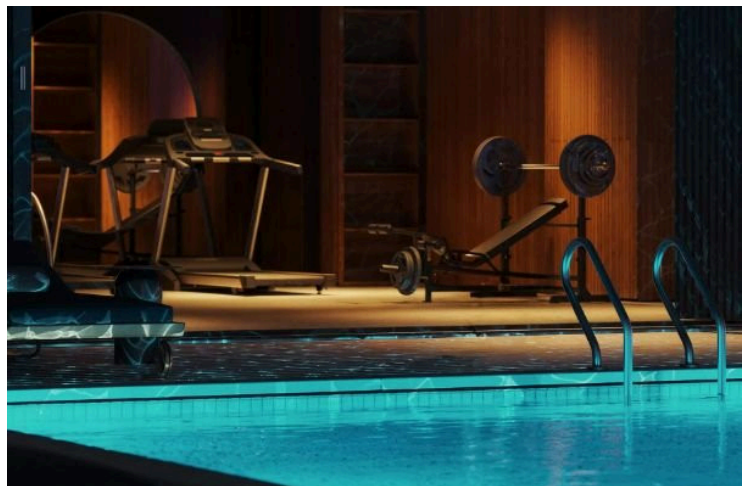
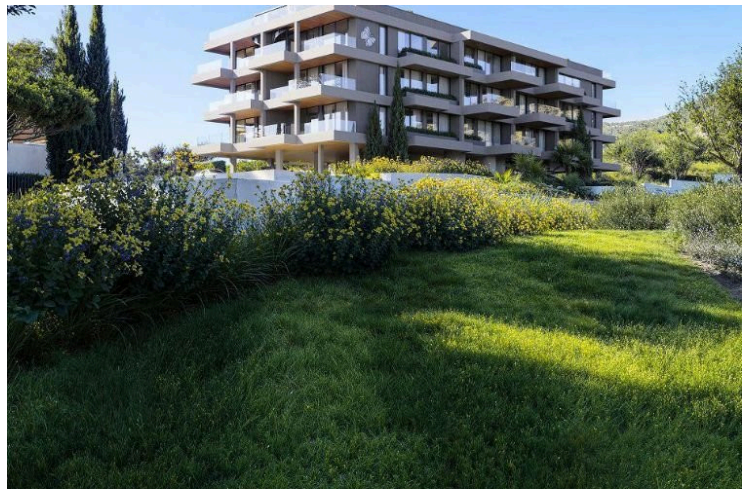
#18280

Modern 2-Bedroom apartment in Germasogeia Limassol (18280)

📍 Germasogeia, Limassol

€490,000 +VAT





Overview

Specifications

Bedrooms

 2

Bathrooms

 2

Covered

 82 m²

Type	Apartment
Toilets	2
Covered veranda	17 m²
Status	Off plan
Year of construction	2028

Furnished	Unfurnished
Structure	Concrete
Facade	Concrete
Energy efficiency rating	 A

Description

Modern Germasogeia Apartment with Pool and Gym

For sale: a sleek and thoughtfully designed off-plan apartment located in the highly desirable area of Germasogeia. Positioned on the ground floor of a modern residential complex, this home offers 82 m² of internal space, featuring 2 generously sized bedrooms and 2 modern bathrooms, perfectly tailored for professionals, couples, or small families seeking comfort and convenience.

The apartment's open-plan living and dining area is flooded with natural light, creating a seamless blend of indoor and outdoor living. With clean architectural lines and a smart layout, this property provides both style and functionality.

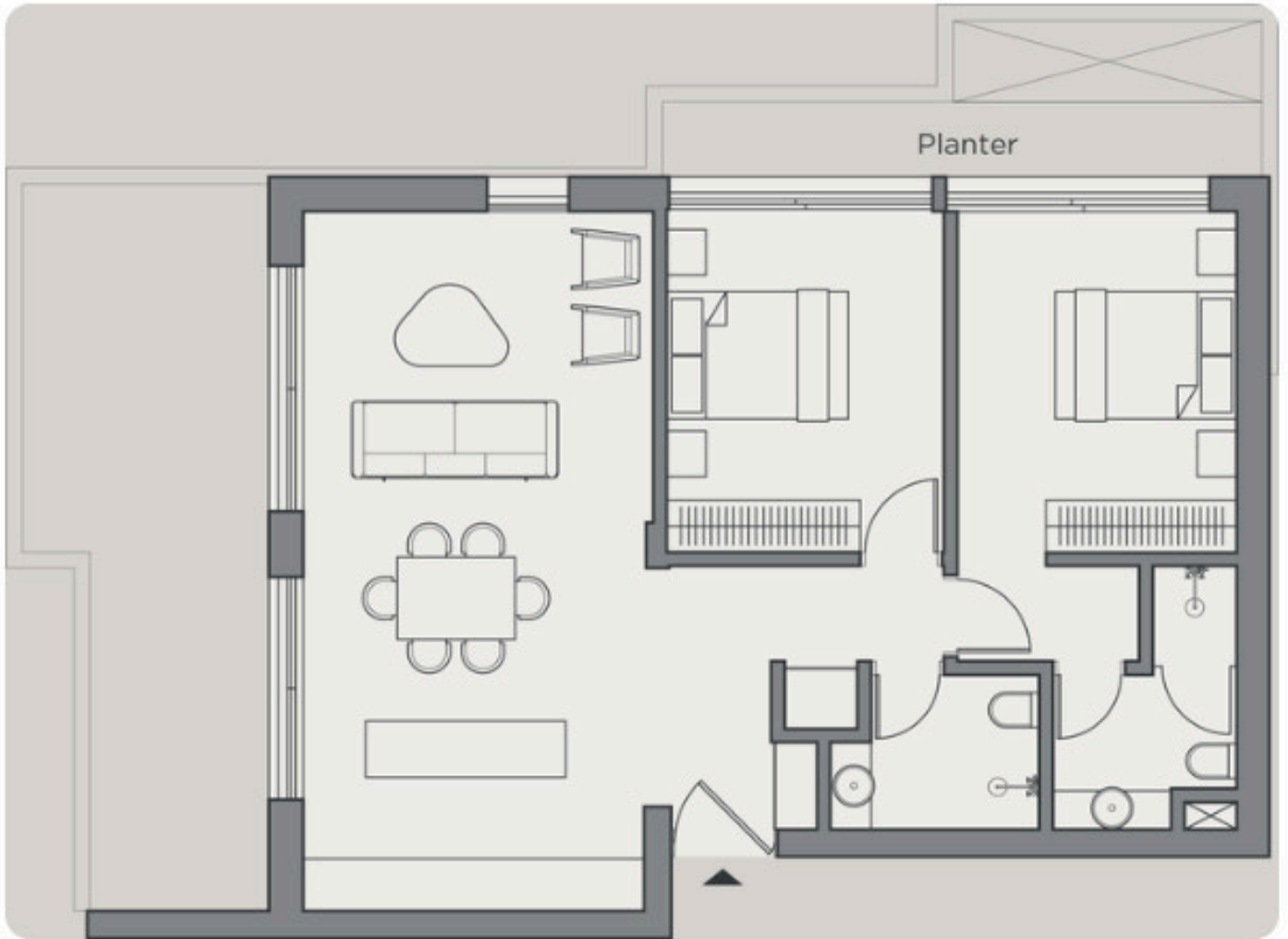
Set for completion in 2028, the apartment will be delivered unfurnished, giving you full freedom to furnish and decorate according to your personal taste. As part of a well-designed development, residents will benefit from access to a communal swimming pool and a fully equipped gym, ideal for leisure and wellness. The building also meets Energy Efficiency Class A standards, ensuring lower running costs and an environmentally responsible design.

Located in the vibrant community of Germasogeia, you'll enjoy proximity to a variety of local amenities including supermarkets, cafes, schools, and the coastline, while the nearby highway access ensures easy travel across Limassol and beyond.

Key Features:



Floor plans



Additional information

Facilities

Aircondition, Provision

Indoor pool, Communal

Clubhouse

Pool, Communal

Gym

Solar photovoltaic panels (provision)

Features

Alarm system

Double glazing

En suite bathroom

Balcony

Easy access to highway

Pressurized water system

Bath

Easy access to main roads

Quiet area

Distances

Amenities

 300 m

Airport

 64 km

Sea

 6.2 km

Schools

 1.3 km


Resort

 2 km

Contact us



Christos Ioannides

 (+357) 95146944

 valantodc@gmail.com

