



#18235

Modern 2 Bedroom Penthouse Apartment – Limassol, Mesa Geitonia (18235)

📍 Mesa Geitonia, Limassol

€595,000 +VAT





Overview

Specifications

Bedrooms



Bathrooms



Covered

89.3 m²

Type	Apartment
Toilets	2
Covered veranda	19 m²
Status	Under construction

Year of construction	2027
Structure	Concrete
Facade	Concrete

Description

Modern 2 Bedroom Penthouse Apartment – Limassol, Mesa Geitonia

Prime Location | Energy Efficient | Contemporary Living

Price: €595,000 + VAT

Status: Under Construction

Estimated Delivery: January 2027

Located in the highly sought-after area of Mesa Geitonia, this stylish penthouse apartment is part of a modern contemporary 4-storey development designed for comfort, functionality, and long-term value.

With excellent access to the city center, highway, and all daily amenities, this property is ideal for both residential use and investment.

Property Overview:

Floor: 4th - Penthouse apartment

Bedrooms: 2

Bathrooms: 2 (including 1 en-suite)

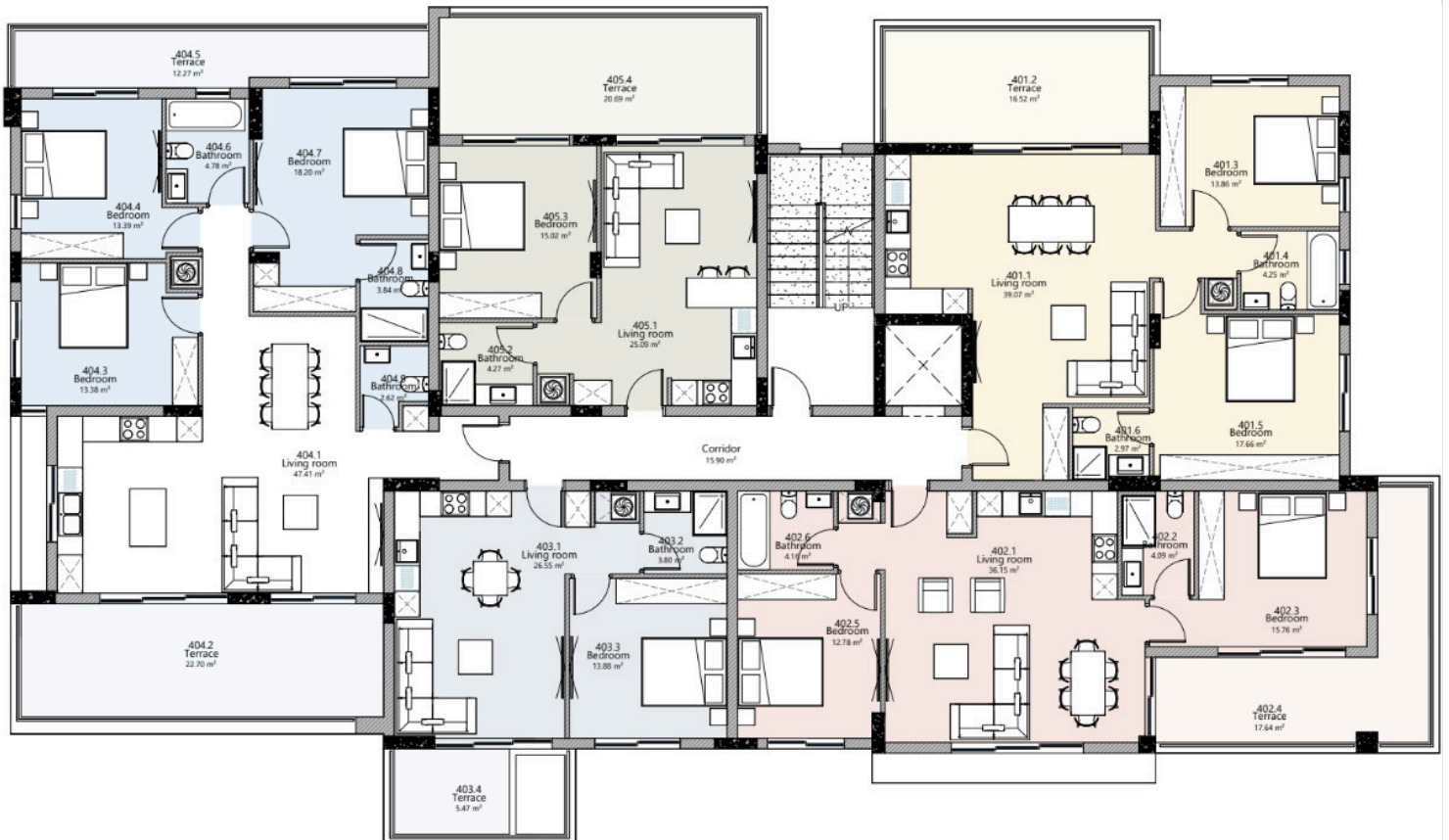
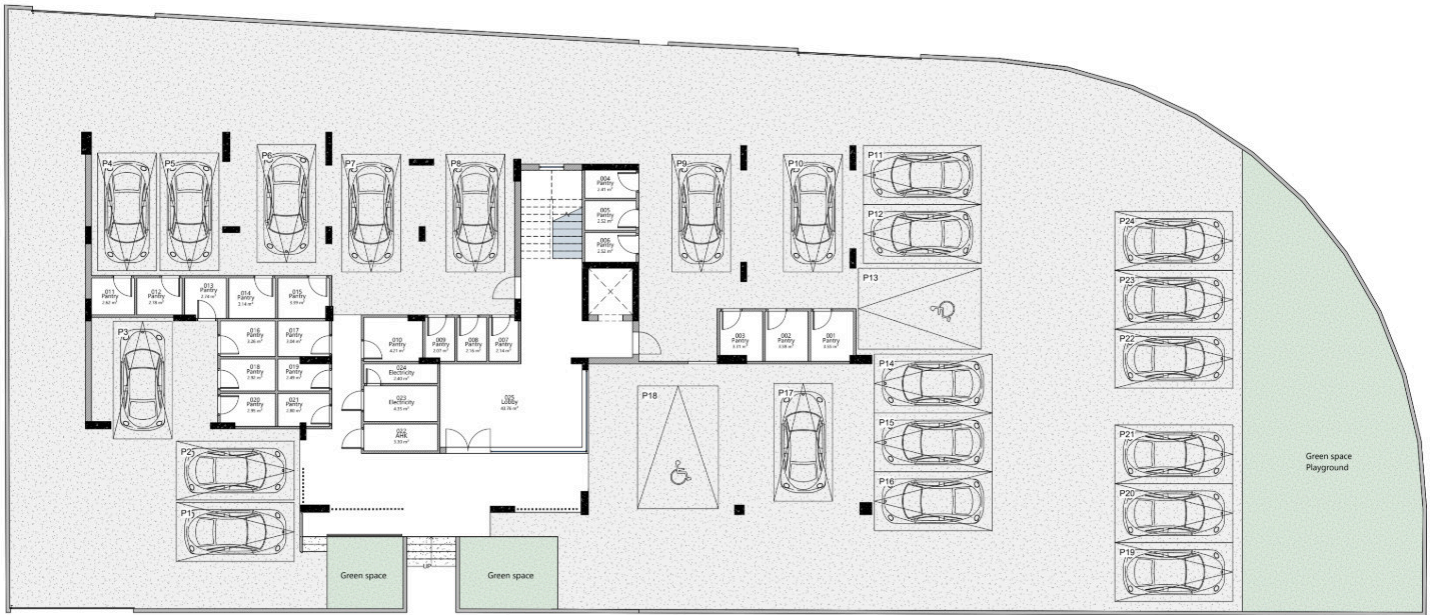
Covered Internal Area: 89.3 m²

Covered Veranda: 19 m²

Parking: 1 space



Floor plans



Additional information

Facilities

Aircondition, Central system

Heating, Underfloor

Storage

Childrens playground

Parking, Covered

Elevator

Solar photovoltaic panels

Features

Balcony

Double glazing

Electric car charger (provision)

Investment opportunity

Near bus route

Veranda

Bright

Easy access to highway

En suite bathroom

Modern design

Open plan

Connected to electric mains

Easy access to main roads

High ceilings

Near amenities

Spacious rooms

Contact us



Christos Ioannides

 (+357) 95146944

 valantodc@gmail.com

