

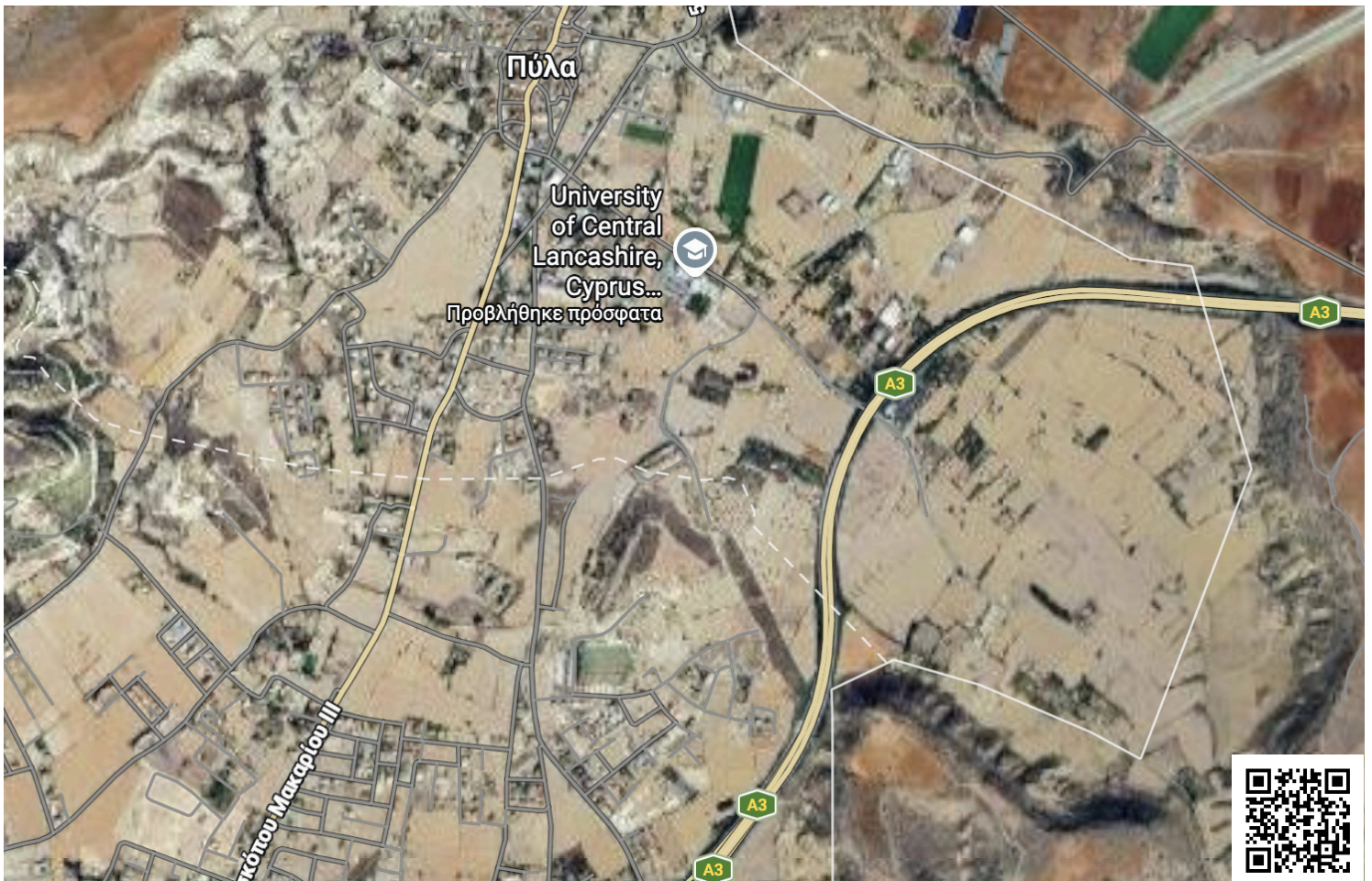


#18118

Prime Residential Field for Sale in Pyla – Excellent Investment Opportunity (18118)

📍 Pyla, Larnaca

€840,000



Overview

Specifications

Area

 9700 m²

Type	Building Plot	Title deed	Yes
------	----------------------	------------	------------

Description

Prime Residential Field for Sale in Pyla – Excellent Investment Opportunity (18118)

A large residential field located in the sought-after area of Pyla, offering a total land area of 7,900 m². The property is ideally situated in a quiet and pleasant neighborhood, just 700 meters from UCLan Cyprus, and close to all essential amenities.

With a building density of 90%, this field presents a fantastic opportunity for residential development, making it ideal for investors or developers looking to build apartments or housing units in a growing area.

Key Features:

Land Area: 9,700 m²

Price: €840,000

Building Density: 90%

Quiet and desirable location

Close to amenities

Only 700m from UCLan Cyprus

This is an excellent investment opportunity in a rapidly developing area with strong potential for future growth.



Additional information

Features

City view

Connected to electric mains

Easy access to highway

Easy access to main roads

Investment opportunity

Mountain view

Near amenities

Near bus route

Prime land

Quiet area

Distances

Amenities

 300 m

Airport

 25 km

Sea

 3 km

Public transport

 500 m

Schools

 700 m

Resort

 1.5 km

Planning zones

Zone	Cover factor	Build factor	Max height	Max floors	Affected percentage
H2	50%	90%	8.3 m	2	-

Contact us



Giorgos Tsiampas

 (+357) 99982112

 infolextrusrealestate@gmail.com

