



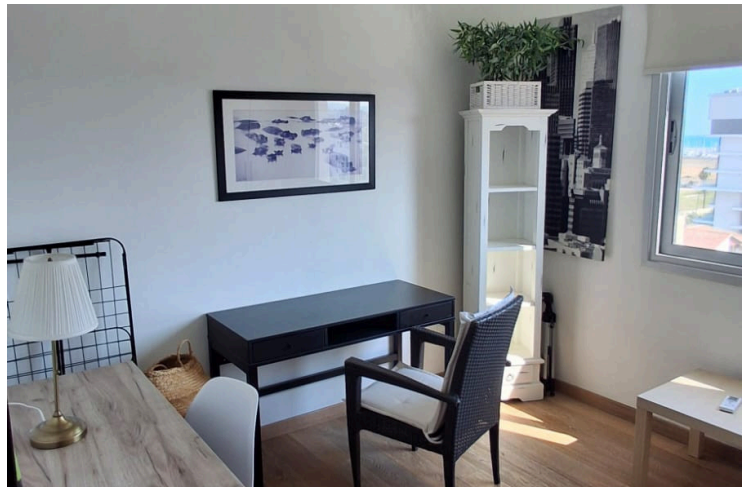
#18013

# LUXURY 2 BEDROOMS PRIVATE APARTMENT IN PORT, LARNACA (15825)

📍 Prodomos/Christopolitisa, Larnaca

€1,700 /month





# Overview

## Specifications

Bedrooms



Bathrooms



Covered

90 m<sup>2</sup>

Type	<b>Apartment</b>
Toilets	<b>2</b>
Covered veranda	<b>15 m<sup>2</sup></b>
Status	<b>Used</b>
Year of construction	<b>2008</b>
Furnished	<b>Fully furnished</b>

Structure	<b>Concrete</b>
Facade	<b>Concrete</b>
Communal charge	<b>€50</b>
Communal charge frequency	<b>Monthly</b>
Energy efficiency rating	<b>A</b>

## Description

This spacious and well-maintained apartment, built in 2008, offers a covered internal area of 90 sqm along with a 15 sqm covered veranda, providing comfortable indoor and outdoor living in the desirable area of Prodromos/Christopolitisa.

Located on the sixth floor of a building with elevator access, the apartment features two bedrooms and two bathrooms, making it ideal for couples, small families, or professionals.

The property boasts a bright open-plan living and dining area, enhanced by large windows that allow plenty of natural light and offer beautiful sea and mountain views. It comes fully furnished with tasteful décor and all essential appliances, ensuring a smooth and immediate move-in.

### Key Features

Covered internal area: 90 sqm

Covered veranda: 15 sqm

2 bedrooms

2 bathrooms

6th floor with elevator

Fully furnished

Stunning sea & mountain views

Energy Efficiency Rating: A

Location



# Additional information

## Facilities

Aircondition, Split system

Elevator

Heating, Split system

Parking, Uncovered

Solar water heater

## Features

Balcony

Balcony, front

Bath

Bright

Double glazing

Easy access to main roads

Fitted wardrobes

Guest WC

Guestroom

Handicap accessible

High ceilings

Kitchen appliances

Kitchenette

Luxury specifications

Modern design

Mountain view

Near amenities

Pressurized water system

Quiet area

Sea view

Sound insulation

Spacious rooms

Thermal insulation

Veranda

Walking distance to beach

## Distances

Amenities

 1 km

Airport

 9.4 km

Sea

 1.4 km

Schools

 2.1 km


Resort

 700 m

## Contact us



**George Sergiou**

 (+357) 94055813

 [info@lextrusrealestate.com](mailto:info@lextrusrealestate.com)

