



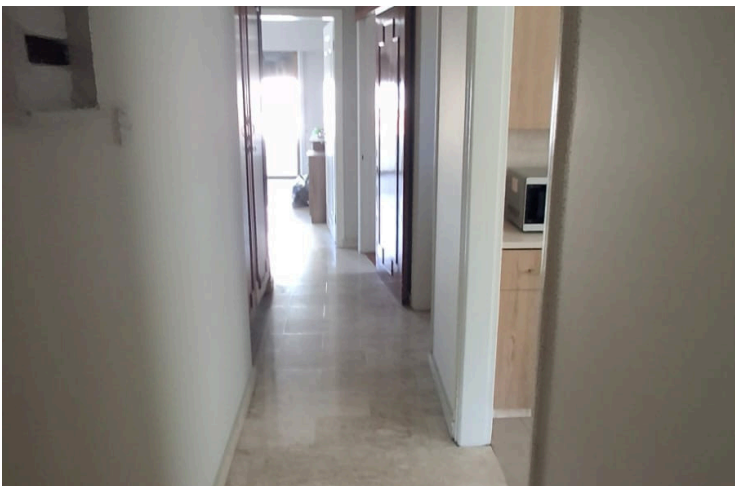
#18012

MODERN 3 BEDROOM APARTMENT MIXED/USE IN CHRISOPOLITISSA, LARNACA (18012)

📍 Prodomos/Christopolitisa, Larnaca

€2,000 /month





Overview

Specifications

Bedrooms

 3


Bathrooms

 2

Covered

 180 m²

| | |
|-----------------|---------------------------|
| Type | Apartment |
| Toilets | 3 |
| Covered veranda | 35 m² |
| Status | Used |
| Furnished | Optional furnished |

| | |
|---------------------------|--|
| Structure | Concrete |
| Facade | Concrete |
| Communal charge | €50 |
| Communal charge frequency | Monthly |
| Energy efficiency rating |  B |

Description

Discover this spacious, fully renovated penthouse in the heart of Prodromos / Christopolitisa, offering 180 m² of covered space and a 35 m² covered veranda—perfect for both residential living or professional office use.

? Property Features

Covered Area: 180 m²

Covered Veranda: 35 m²

Bedrooms / Rooms: 3 (can be adapted as offices)

Bathrooms: 2

Renovated: 2024

Furnishing: Optional

Private elevator access

The layout is highly flexible, making it ideal for:

A comfortable home with large living areas

A company office or workspace with multiple rooms and open-plan areas

Large windows provide abundant natural light and sea views, while the open-plan design allows easy customization depending on your needs.

? Location – Prodromos / Christopolitisa

Central and well-connected area



Additional information

Facilities

Aircondition, Split system

Elevator

Heating, Split system

Parking, Covered

Storage

Features

Balcony

Bath

Bright

Double glazing

Easy access to main roads

En suite bathroom

Fitted wardrobes

Guest WC

Guestroom

Internal stairs

Kitchen appliances

Modern design

Near amenities

Pets allowed

Quiet area

Sea view

Shutters

Smart home automation

Sound insulation

Spacious rooms

Suitable for work

Thermal insulation

Veranda, large

Walking distance to beach

Distances

Amenities



1 km

Airport



9.4 km

Sea



1.4 km

Resort




700 m

Contact us



George Sergiou

 (+357) 94055813

 info@lextrusrealestate.com

