



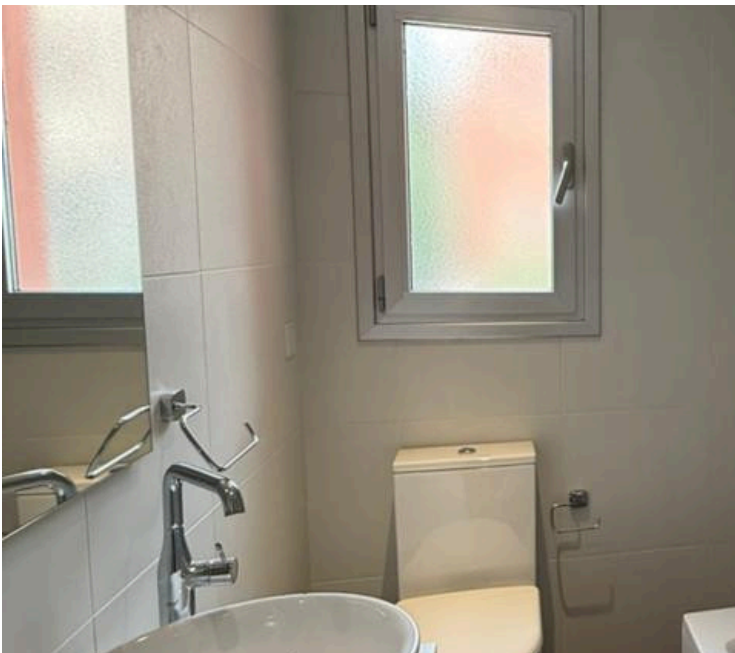
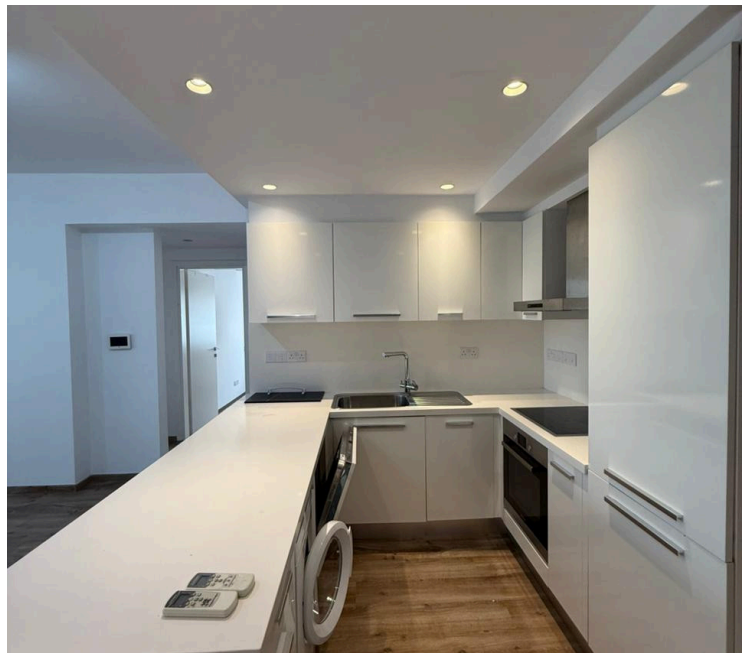
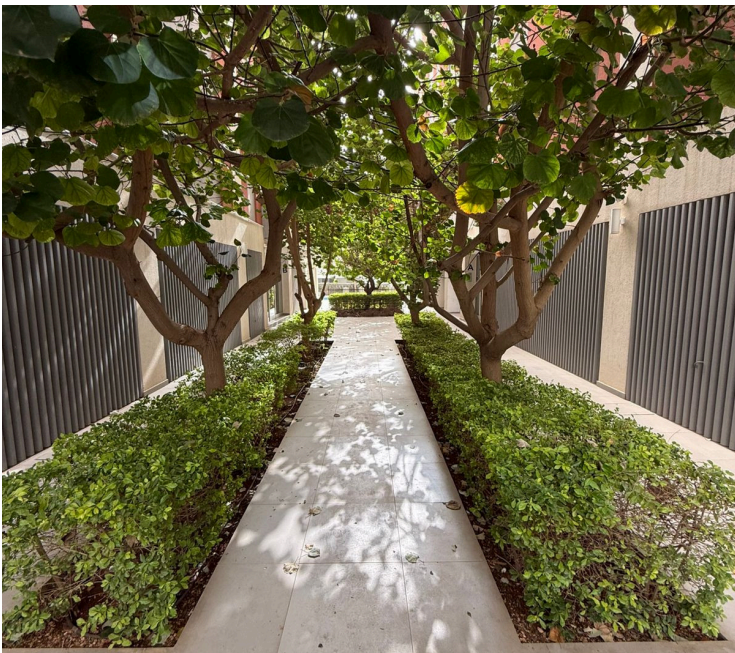
#17909

# Spacious 3 Bedroom Top Floor Apartment Mesa Geitonia

📍 Mesa Geitonia, Limassol

€2,100 /month





# Overview

## Specifications

Bedrooms

 3


Bathrooms

 1

Covered

 110 m<sup>2</sup>

Type	<b>Apartment</b>
Toilets	<b>2</b>
Covered veranda	<b>25 m<sup>2</sup></b>
Status	<b>Key ready</b>

Year of construction	<b>2017</b>
Furnished	<b>Partially furnished</b>
Energy efficiency rating	 <b>B</b>

## Description

Modern 3-Bedroom Top-Floor Apartment in Elysia Residences, Mesa Geitonia

Located in the sought-after Elysia complex in Mesa Geitonia, this spacious 3-bedroom apartment sits on the top (3rd) floor of a well-maintained residential building with a communal swimming pool.

The apartment offers approximately 105–115 m<sup>2</sup> of internal living space, complemented by generous covered verandas, bringing the total covered area to around 125–140 m<sup>2</sup>. The layout features a bright open-plan living and dining area, a fully equipped kitchen, three comfortable bedrooms (including a master with en-suite), a main bathroom, and ample balcony space ideal for outdoor living.

Residents benefit from a quiet residential environment while being just 3–4 km from the Limassol seafront and within walking distance (0.2–1 km) to shops, supermarkets, cafes, and everyday amenities. Several public and private schools are also conveniently located within a short drive (0.5–6 km).

Additional features include:

- \* Full air-conditioning (hot & cold) in all rooms
- \* Covered parking
- \* Access to communal swimming pool
- \* Top-floor privacy and natural light

An excellent choice for comfortable living.



# Additional information

## Facilities

Aircondition, Split system

Indoor pool, Communal

Storage

Elevator

Parking, Covered

Gated complex

Solar water heater

## Features

Balcony

City view

Easy access to highway

Entrance gate

Floor-to-ceiling windows

Kitchen appliances

Municipal water/sewage

Pool view

Spacious rooms

Bath

Combined kitchen and dining area

Easy access to main roads

Entrance hall

Guest WC

Laminate flooring

Near amenities

Quiet area

Tile flooring

Bright

Double glazing

Elevated

Fitted wardrobes

Guestroom

Modern design

Open plan

Roller blinds

Veranda

## Distances

Amenities

 400 m

Airport

 67 km

Sea

 3.2 km

Public transport

 300 m

Schools

 1.5 km


Resort

 6.1 km

## Contact us



**Elena Sokil**

 (+357) 95759512

 lenasokil0@gmail.com

