



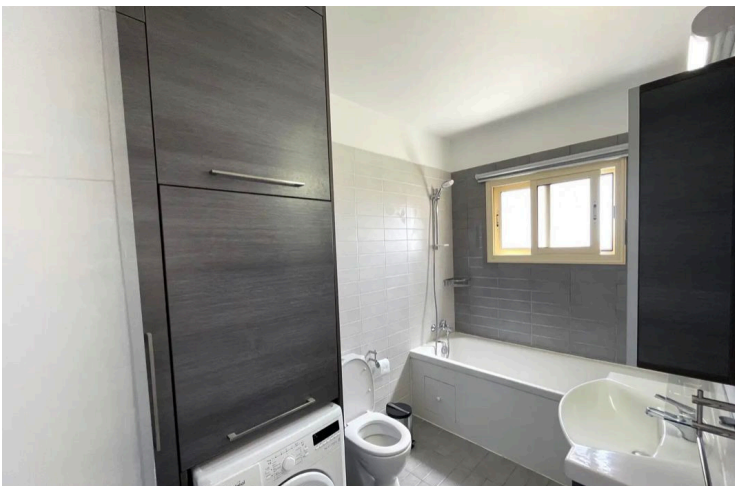
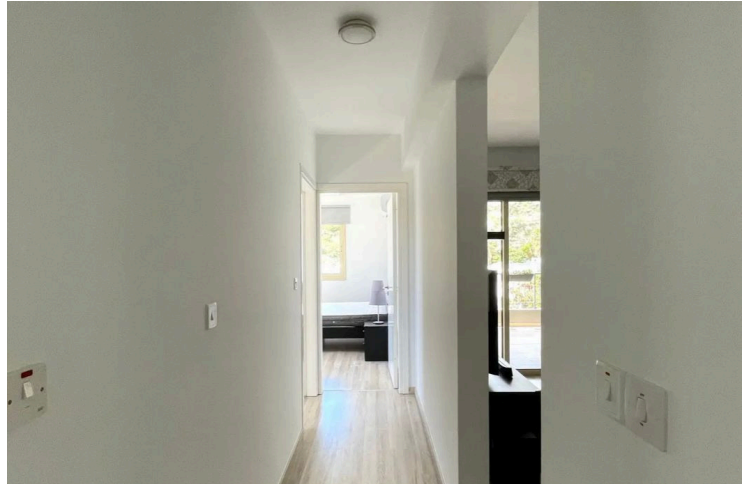
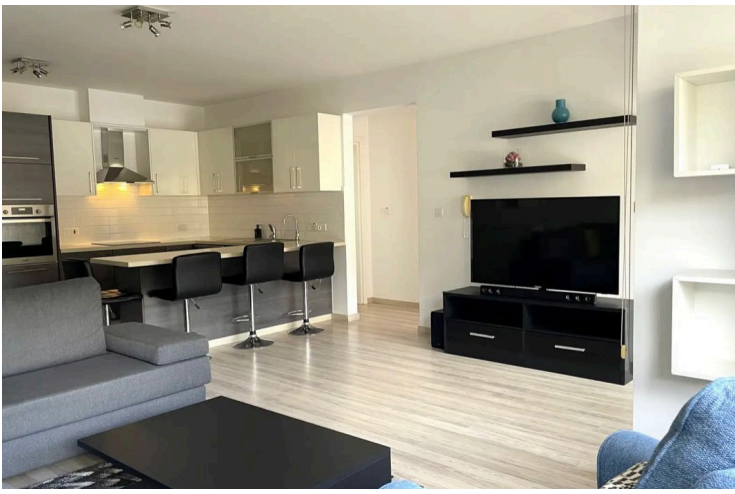
#17810

# Fully Furnished Two Bedroom Apartment Agia Fyla Residential Area

📍 Agia Fyla, Limassol

€280,000





# Overview

## Specifications

Bedrooms

 2


Bathrooms

 1

Covered

 81 m<sup>2</sup>

Type	<b>Apartment</b>
Showers	<b>1</b>
Toilets	<b>1</b>
Covered veranda	<b>18 m<sup>2</sup></b>
Status	<b>Resale</b>
Year of construction	<b>2008</b>

Title deed	<b>Yes</b>
Furnished	<b>Fully furnished</b>
Structure	<b>Concrete</b>
Facade	<b>Concrete</b>
Energy efficiency rating	 <b>B</b>

## Description

For sale is a charming resale apartment in the desirable Agia Fyla area, offering comfortable living in a friendly and well-connected neighborhood. With an internal space of 81 square meters, this home features two spacious bedrooms and one modern bathroom, making it ideal for small families, couples, or anyone seeking a practical living space.

Located in a secure building with an elevator, the property was built in 2008 and is fully furnished, so you can move in right away without any extra expense. The apartment's thoughtful layout allows plenty of natural light, while large windows and a balcony provide both panoramic and mountain views, perfect for relaxing after a long day.

Agia Fyla is known for its attractive residential environment, combining peace and convenience. The area offers quick access to the highway for easy commuting, while nearby amenities include supermarkets, shops, schools, and cafes, all just minutes away.

This is an excellent opportunity for buyers looking for a ready-to-live property in a sought-after location. For more information or to schedule a viewing, contact Lextrus Real Estate today.



# Additional information

## Facilities

Aircondition, Split system

Elevator

Heating, Split system

Parking, Covered

Storage

## Features

Balcony

Bright

Ceramic tiles

Combined kitchen and dining area

Connected to electric mains

Double glazing

Easy access to highway

Easy access to main roads

Investment opportunity

Kitchen appliances

Mountain view

Near amenities

Next to green area

Open plan

Openings in opposite sides

Panoramic view

Parquet flooring

Quiet area

## Distances

Amenities



800 m

Airport



45 km

Schools




500 m

## Contact us



**Christos Miliotis**

 (+357) 99130125

 christosmiliotis12@gmail.com

