



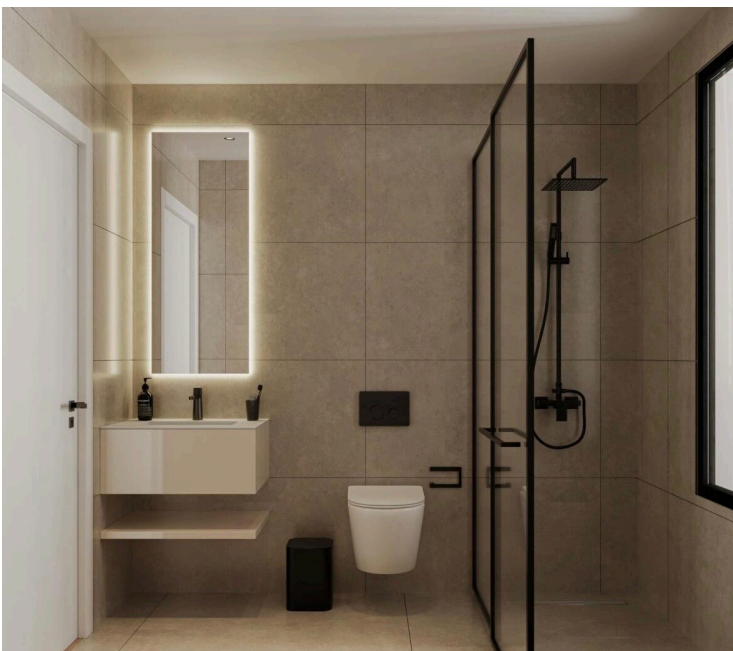
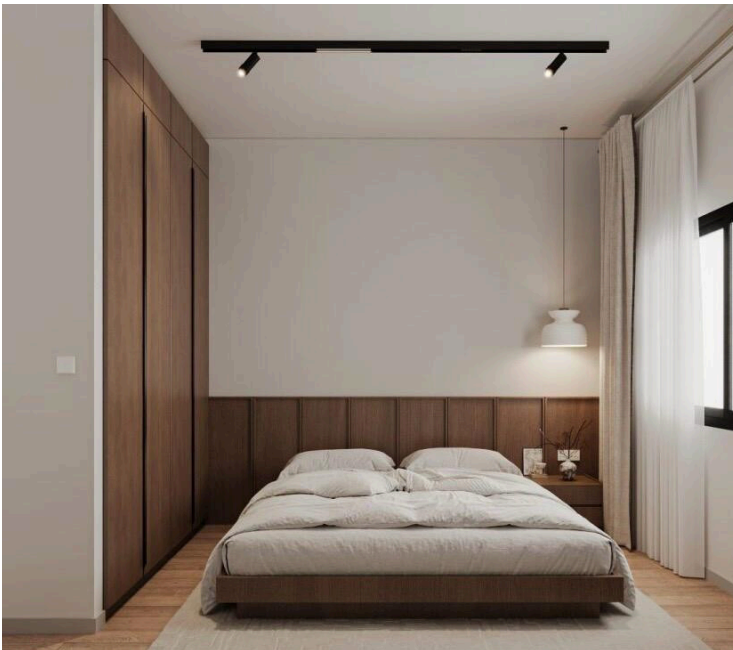
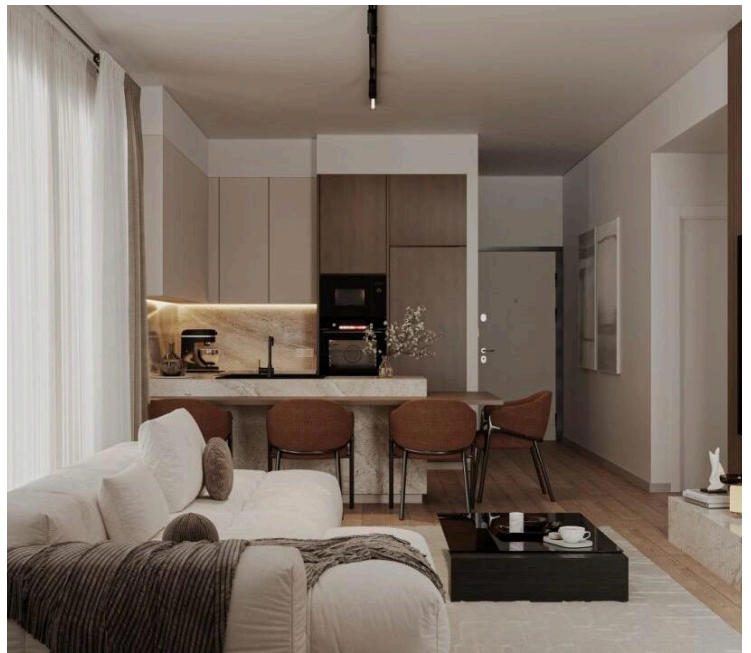
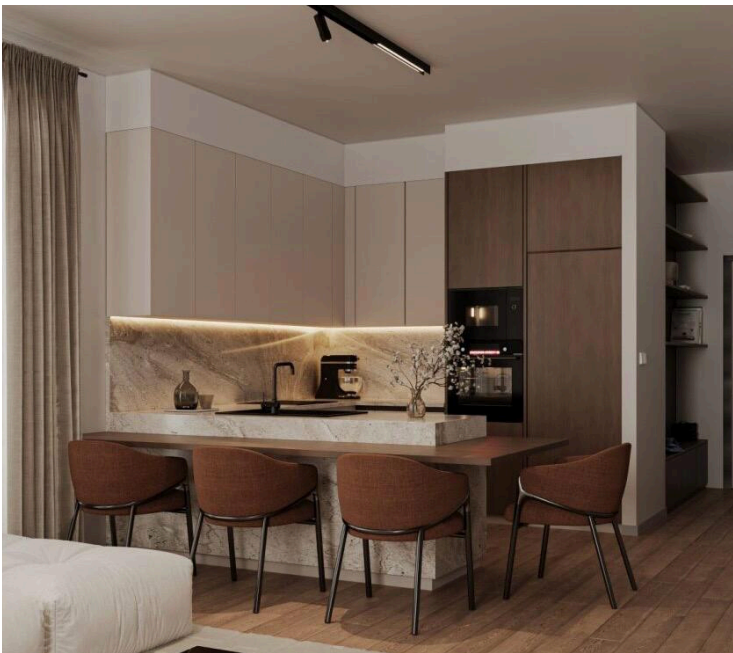
#17702

# Modern Two Bedroom Apartment With Roof Garden in Central Kapsalos

📍 Kapsalos, Limassol

€475,000 +VAT





# Overview

## Specifications

Bedrooms



Bathrooms



Covered



Type	<b>Apartment</b>
Showers	<b>2</b>
Toilets	<b>2</b>
Covered veranda	<b>24 m<sup>2</sup></b>
Roof garden	<b>38 m<sup>2</sup></b>

Status	<b>Off plan</b>
Year of construction	<b>2027</b>
Structure	<b>Concrete</b>
Facade	<b>Concrete</b>

## Description

For sale: Modern off-plan apartment in the desirable area of Kapsalos. This property offers an internal space of 84 m<sup>2</sup> and is situated on the top floor of a three-story building, ensuring both privacy and outstanding views. The apartment features two comfortable bedrooms and two well-designed bathrooms, perfect for both families and professionals.

Kapsalos is well known for its balanced lifestyle, offering a peaceful residential atmosphere with easy access to city conveniences. The area boasts a range of amenities including shops, cafes, and schools, all within close reach. Residents benefit from immediate access to the highway, making travel simple and fast, whether you're commuting or planning weekend getaways.

The apartment is designed to complement modern living, with large windows providing beautiful city and country views. Underfloor heating offers warmth and comfort throughout the cooler months. The building is scheduled for completion in 2027, promising the latest in contemporary finishes and energy efficiency.

This is an excellent opportunity to own a stylish new home in an ideal location. For further details or to reserve your spot, contact Lextrus Real Estate.



# Additional information

## Facilities

Aircondition, Split system

Solar photovoltaic panels

Heating, Underfloor

Storage

Parking, Covered

## Features

24-hour security

Bright

Central satellite system

Combined kitchen and dining area

Country view

Easy access to highway

En suite bathroom

Guest WC

Luxury specifications

Open plan

Quiet area

Smart home automation

Water softener

Balcony

CCTV

Ceramic tiles

Connected to electric mains

Door screen

Easy access to main roads

Energy efficient doors/windows

Heart of city center

Modern design

Openings in opposite sides

Rental potential

Sound insulation

Bathroom underfloor heating

Central TV system

City view

Corner

Double glazing

Elevated

Floor-to-ceiling windows

Investment opportunity

Near amenities

Pipe-in-pipe plumbing system

Shutters, electric

Thermal insulation

## Distances

Amenities



600 m

Airport



45 km

Schools




1 km

## Contact us



**Christos Miliotis**

 (+357) 99130125

 christosmiliotis12@gmail.com

