



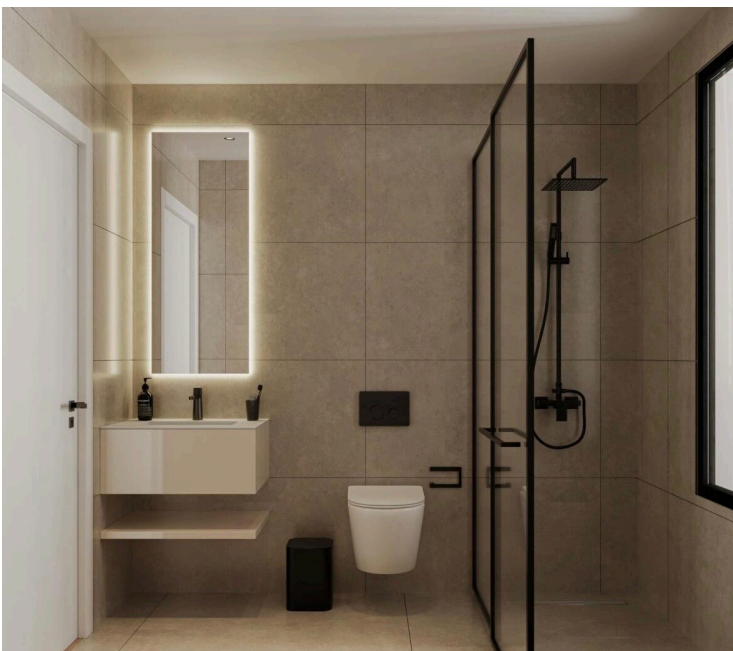
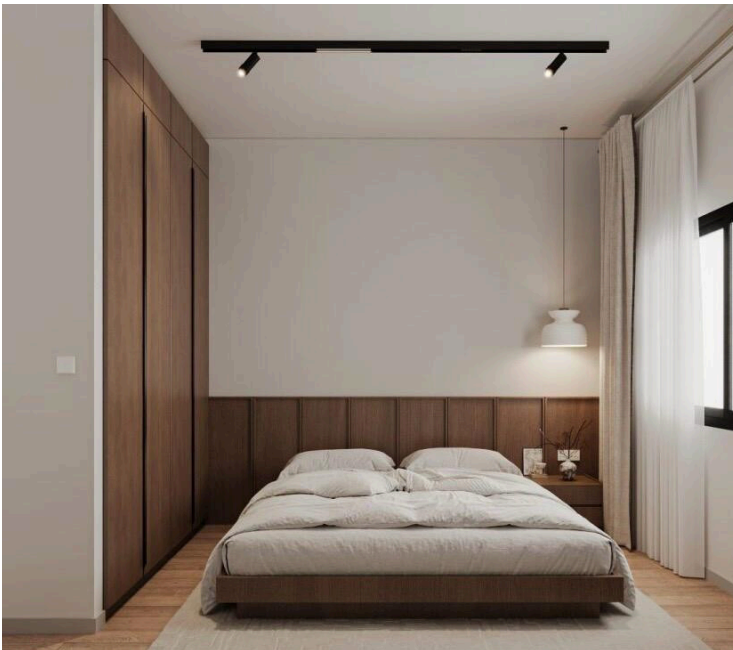
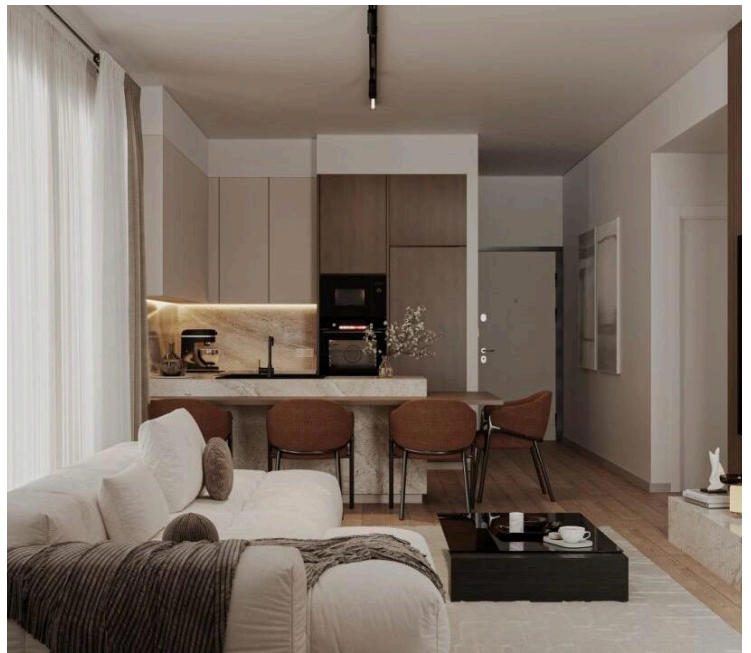
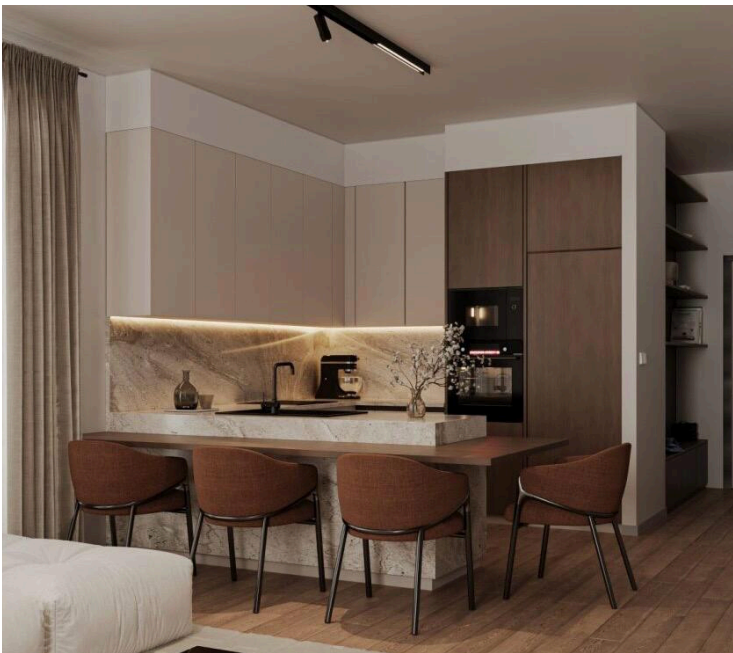
#17699

Modern Two Bedroom Apartment in Central Kapsalos For Sale

📍 Kapsalos, Limassol

€410,000 +VAT





Overview

Specifications

Bedrooms

 2

Bathrooms

 2

Covered

 84 m²

Type	Apartment
Showers	2
Toilets	2
Covered veranda	30 m²

Status	Off plan
Year of construction	2027
Structure	Concrete
Facade	Concrete

Description

For sale is a modern, off-plan apartment in Kapsalos, offering comfortable living in a convenient location. This spacious home features 84 square meters of internal space, thoughtfully designed with two bedrooms and two bathrooms, providing privacy and flexibility for families or professionals.

Located on the second floor of a three-story building, the apartment offers both city and country views, creating a relaxing atmosphere throughout the day. Built with quality in mind, the home will be completed in 2027 and includes underfloor heating, ensuring warmth and comfort during cooler months. Large windows and an open layout contribute to a bright and welcoming interior.

Kapsalos is a vibrant area known for its blend of city life and suburban tranquility. Here, you are close to major highways for easy commuting, as well as essential amenities including shops, supermarkets, schools, and cafes. The neighborhood is popular for its friendly community and accessibility to all that the city has to offer.

This property is listed by Lextrus Real Estate. It presents an excellent opportunity to secure a modern apartment in one of the most sought-after areas. Contact us today to learn more about making this off-plan home your own.



Additional information

Facilities

Aircondition, Split system

Solar photovoltaic panels

Heating, Underfloor

Storage

Parking, Covered

Features

24-hour security

Bright

Central satellite system

Combined kitchen and dining area

Country view

Easy access to highway

En suite bathroom

Guest WC

Luxury specifications

Open plan

Quiet area

Smart home automation

Water softener

Balcony

CCTV

Ceramic tiles

Connected to electric mains

Door screen

Easy access to main roads

Energy efficient doors/windows

Heart of city center

Modern design

Openings in opposite sides

Rental potential

Sound insulation

Bathroom underfloor heating

Central TV system

City view

Corner

Double glazing

Elevated

Floor-to-ceiling windows

Investment opportunity

Near amenities

Pipe-in-pipe plumbing system

Shutters, electric

Thermal insulation

Distances

Amenities



600 m

Airport



45 km

Schools




1 km

Contact us



Christos Miliotis

 (+357) 99130125

 christosmiliotis12@gmail.com

