



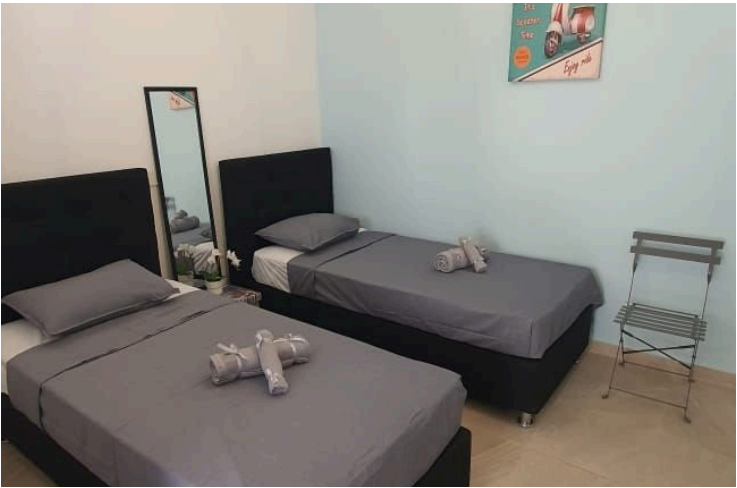
#1747

# SEMI DETACHED HOUSE SEPERATED IN 4 APARTMENTS IN A HALF PLOT IN THE ENTRANCE OF THE PORT (1747)

 Port, Larnaca

€800,000





# Overview

## Specifications

Bedrooms



Bathrooms



Covered



Type	<b>House</b>
Toilets	<b>4</b>
Plot	<b>261 m<sup>2</sup></b>
Status	<b>Resale</b>
Year of construction	<b>1960</b>

Title deed	<b>Yes</b>
Furnished	<b>Fully furnished</b>
Structure	<b>Concrete</b>
Facade	<b>Concrete</b>
Energy efficiency rating	 <b>Certificate expected</b>

## Description

SEMI DETACHED HOUSE SEPERATED IN 4 APARTMENTS IN A HALF PLOT IN THE ENTRANCE OF THE PORT (1747)

@EUR 800.000

- Plot very close to the entrance of the port. It is a half plot around 261 sq.m. and inside there is an old house.
- The owner renovated it and rents it for airbnb. Of course in that location you can demolish it and make a big building.
- 4 FLATS SEPERATED
- USED AS AIRBNB
- OPEN PLAN
- DOUBLE GLAZING
- NEAR AMENITIES
- DENSITY 140%
- COVERAGE 50%



# Additional information

## Facilities

Aircondition, Split system

Heating, Split system

Parking, Uncovered

## Features

Double glazing

Easy access to main roads

Near amenities

Open plan

Rental potential

## Distances

Amenities

 200 m

Airport

 10 km

Public transport

 1 km

Schools

 400 m

Resort

 1 km

## Contact us



**Stavroula Michail**

 (+357) 99810880

 stavroulamichail.lextrus@gmail.com

