



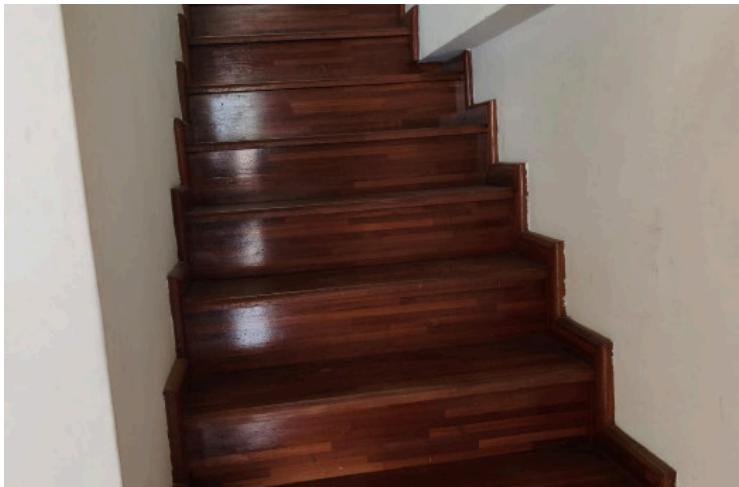
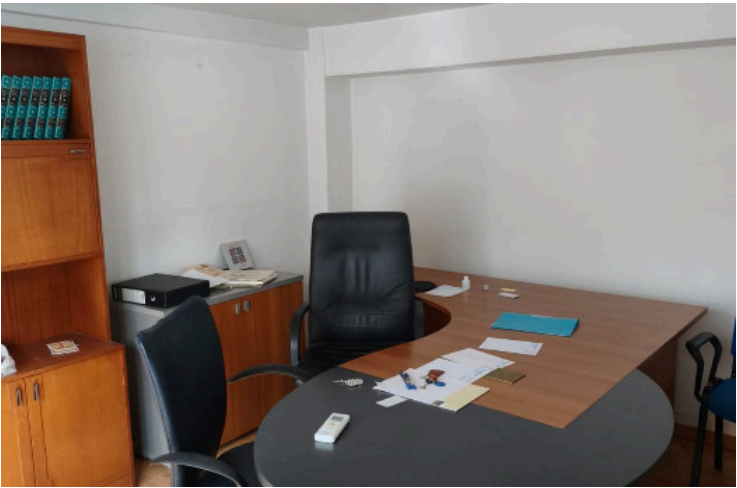
#16832

Office for Rent – Historical Center, Limassol (16832)

📍 Historical Center, Limassol


€3,300 /month





Overview

Specifications

Covered		190 m ²	
Type	Office	Year of construction	2009
Status	Used	Energy efficiency rating	 Certificate expected

Description

Office for Rent – Historical Center, Limassol

Prime office space available on the main road in the Historical Center of Limassol, offering excellent visibility and easy access.

- ? 190 sq.m. total area
- ? Ground Floor & Mezzanine
- ? 1 WC
- ? Kitchenette
- ? Built in 2009
- ? €3,300 per month

This modern office is ideal for businesses seeking a prestigious address in the heart of Limassol. It comprises of the ground floor that offers a welcoming entrance and the mezzanine provides additional space. The property includes one WC and a kitchenette, making it fully practical for daily business operations.

With 4 parking spaces in total (2 inside and 2 at the side of the building), the office provides excellent convenience for staff and clients.

Perfect for any professional services.

For more information or to arrange a viewing, please contact us.



Additional information

Features

Easy access to highway

Easy access to main roads

Kitchenette

Near amenities

Near bus route

Near public transport

Contact us



Christos Ioannides

📞 (+357) 95146944

✉️ valantodc@gmail.com

