



#16760

📍 Mesa Geitonia, Limassol

€900,000





# Overview

## Specifications

Covered

 131 m<sup>2</sup>

Type	Shop	Year of construction	2016
Toilets	1	Title deed	Yes
Mezzanine	73 m <sup>2</sup>	Structure	Concrete
Status	Resale	Energy efficiency rating	 A

## Description

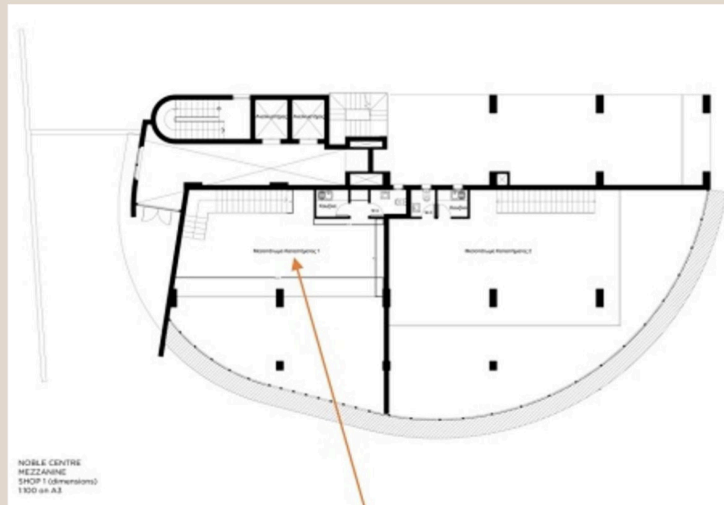
We are pleased to offer a high-visibility retail space located on Spyrou Kyprianou Avenue. This modern shop is situated on the ground floor with an additional mezzanine level, offering a total of 204m<sup>2</sup> of versatile commercial space. The shop is part of the prestigious business center “Noble Center”, developed by Imperio, a leading and reputable real estate developer known for creating exceptional, high-quality spaces. The business tower combines cutting-edge architectural design with the latest in technology, featuring striking glass facades and soundproof glass surfaces. This is an ideal opportunity for businesses looking for a prominent retail location, whether for a showroom, boutique, or office space. The building’s design ensures maximum visibility while providing a peaceful working environment. With its proximity to key amenities and transport links, this space offers both style and practicality.

### FEATURES & SPECIFICATIONS

- Year of construction – 2016
- All internal areas are paved with ceramic tiles.
- Split units for air conditioning (heating and cooling) in all areas.
- Kitchen and toilet on the mezzanine.
- 3 private parking spaces
- Easy parking in front of the shop for customers.
- Communal roof garden.
- Updated title deed available.



# Floor plans

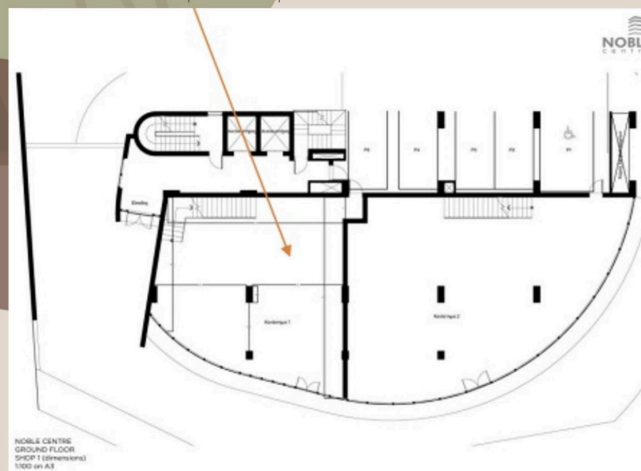


MEZZANINE FLOOR - 73m<sup>2</sup>

1 office  
Open office space  
Kitchen  
Toilet

GROUND FLOOR - 131m<sup>2</sup>

Reception – Large open space  
Conference room  
Open office space





# Additional information

## Facilities

Aircondition, Split system

Parking, Covered

## Features

Ceramic tiles

City view

Conference hall

Easy access to main roads

Excellent condition

Floor-to-ceiling windows

Heart of city center

Internal stairs

Kitchenette

Meeting room

Municipal water/sewage

Near amenities

Near bus route

Near public transport

Reception

Roof garden

Spacious rooms

## Distances

Amenities

 50 m

Airport

 67 km

Sea

 1.6 km

Public transport

 100 m

Schools

 2 km

Resort

 4 km

## Contact us



**Elena Sokil**

 (+357) 95759512

 lenasokil0@gmail.com

