



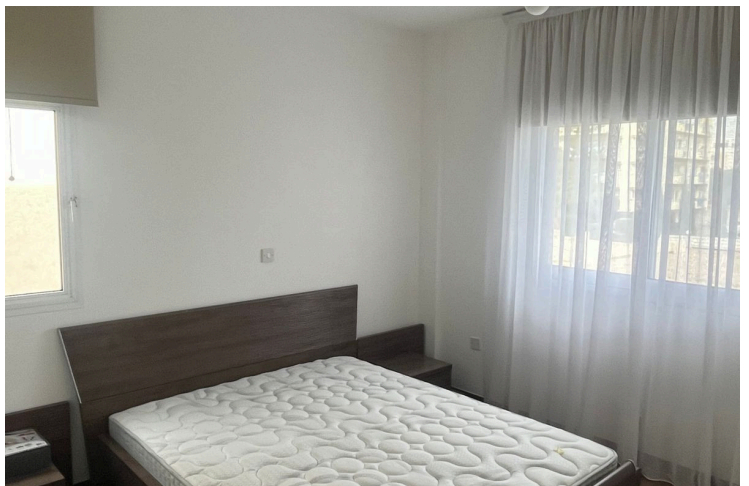
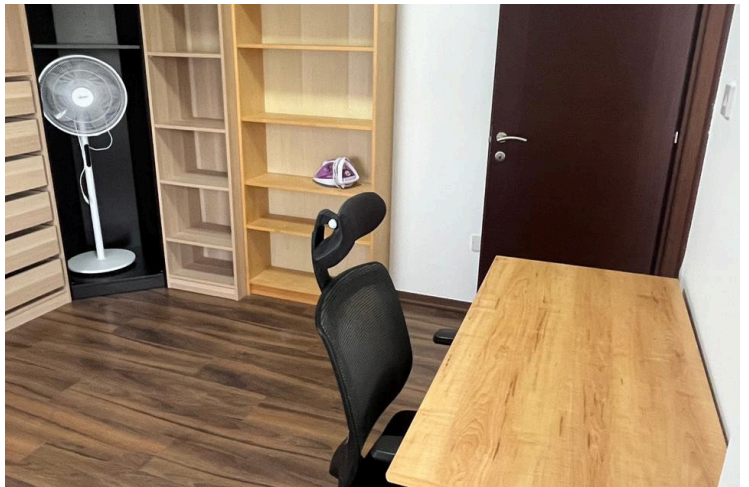
#16207

# Modern 3 Bedroom Apartment in Lively Tourist Area

📍 Germasogeia Tourist Area, Limassol

€2,700 /month





# Overview

## Specifications

Bedrooms

 3


Bathrooms

 1

Covered

 100 m<sup>2</sup>

Type	<b>Apartment</b>
Toilets	<b>1</b>
Status	<b>Key ready</b>
Year of construction	<b>2007</b>

Furnished	<b>Fully furnished</b>
Structure	<b>Concrete</b>
Energy efficiency rating	 <b>A</b>

## Description

Newly Renovated 3-Bedroom Apartment for Rent — Tourist Area, Limassol (2nd Line from the Beach)

Modern and fully renovated 3-bedroom apartment available for long-term rent in the tourist area of Limassol, located on the second line from the beach and within walking distance to shops, restaurants, coffee shops, confectionaries, supermarkets, skatepark and dentist.

The apartment is situated on the 1st floor of a gated residential complex with constant security. It offers a practical layout with two bedrooms plus a separate office room, ideal for remote work or additional storage.

The property includes a bright living and dining area, fitted kitchen, built-in wardrobes, balcony, and skyline views of nearby high-rise building.

Complex features:

- Communal swimming pool
- Landscaped green areas
- Children's playground
- Secure gated entrance with constant security

Additional features:

- Newly renovated
- 1 covered parking space
- Private storage unit
- Air conditioning



# Additional information

## Facilities

Aircondition, Split system

Gated complex

Parking, Covered

Storage

Childrens playground

Landscaped garden

Pool, Communal

Elevator

Outdoor shower

Solar water heater

## Features

24-hour security

Barbeque

Combined kitchen and dining area

Easy access to highway

Entrance gate, automated

Kitchen appliances

Near amenities

Quiet area

Tile flooring

Alarm system

Bath

Courtyard

Easy access to main roads

Fitted wardrobes

Laminate flooring

Near bus route

Roller blinds

Walking distance to beach

Balcony

Ceramic tiles

Double glazing

Elevated

Garden, large

Municipal water/sewage

Pets allowed

Shower

## Distances

Amenities

 100 m

Airport

 65 km

Sea

 40 m

Public transport

 50 m

Schools

 1 km


Resort

 4.5 km

## Contact us



**Elena Sokil**

 (+357) 95759512

 lenasokil0@gmail.com

