



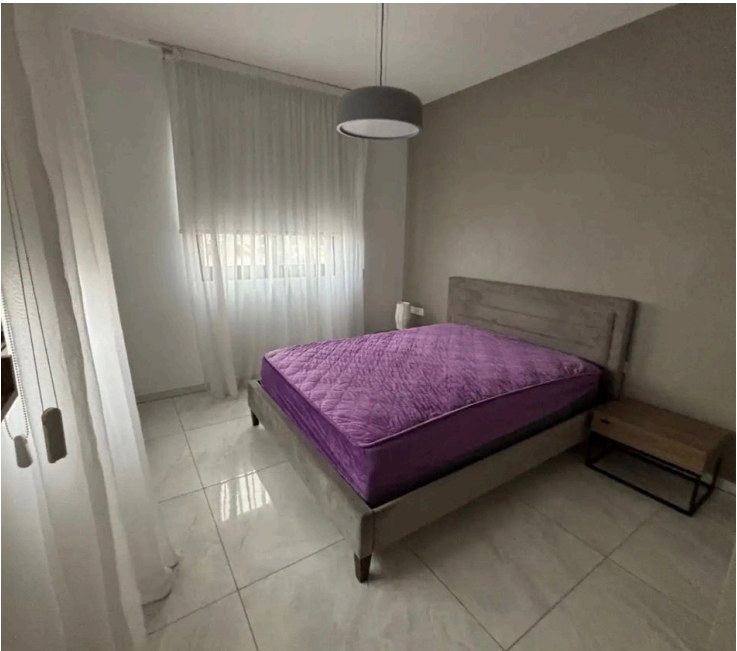
#16206

Modern Two Bedroom Apartment in Lively Germasogeia Neighborhood

📍 Germasogeia, Limassol

€1,800 /month





Overview

Specifications

Bedrooms

 2


Bathrooms

 1

Covered

 81 m²

Type	Apartment
Showers	1
Toilets	2
Covered veranda	18 m ²

Status	Key ready
Year of construction	2021
Furnished	Fully furnished
Energy efficiency rating	 A

Description

Discover modern living in this key-ready apartment located in the vibrant area of Germasogeia. Situated on the top floor of a gated complex with elevator access, this spacious 81 m2 home offers comfort and style. It features two inviting bedrooms and a contemporary bathroom, all finished to a high standard. The open-plan layout is filled with natural light and includes stunning city, mountain, and country views.

Built in 2021, this fully furnished apartment is designed for energy efficiency, earning an A rating. Enjoy the benefits of underfloor heating, making it cozy all year round. The property's modern touches and quality furnishings make it ready for you to move in immediately.

Germasogeia is a sought-after area known for its blend of tranquility and convenience. Residents enjoy easy access to the highway and an array of local amenities, including shops, cafes, and parks. The area combines urban comforts with scenic surroundings, making it ideal for professionals and families.

This attractive apartment is available for rent exclusively through Lextrus Real Estate. Contact us today to arrange a viewing and make this beautiful home yours.



Additional information

Facilities

Aircondition, Split system

Heating, Underfloor

Storage

Elevator

Parking, Covered

Gated complex

Solar water heater

Features

Balcony

Bright

Double glazing

Elevated

Entrance gate

Laminate flooring

Municipal water/sewage

Quiet area

Spacious rooms

Bath

City view

Easy access to highway

En suite shower

Guest WC

Modern design

Near amenities

Separate dining area

Tile flooring

Bathroom underfloor heating

Country view

Easy access to main roads

Energy efficient doors/windows

Kitchen appliances

Mountain view

Near bus route

Shower

Distances

Amenities

 200 m

Airport

 65 km

Sea

 1.4 km

Public transport

 200 m

Schools

 1 km


Resort

 6 km

Contact us



Elena Sokil

 (+357) 95759512

 lenasokil0@gmail.com

