



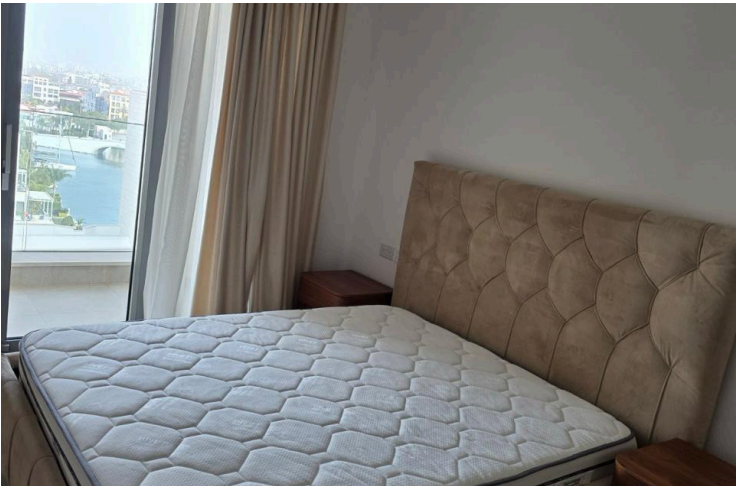
#16204

Seafront Apartment with Pool and Gym Limassol Marina

📍 Limassol Marina, Limassol





€10,000 /month





Overview

Specifications

Bedrooms		Bathrooms		Covered	
 3		 1		 148 m ²	
Type	Apartment				
Showers	1				
Toilets	3				
Covered veranda	55 m ²				
Status	Key ready				
Year of construction	2014				
Furnished	Fully furnished				
Structure	Concrete				
Communal charge	€1,000				
Communal charge frequency	Monthly				
Energy efficiency rating	 B+				

Description

Available for rent is a beautifully maintained, key-ready apartment in the prestigious Limassol Marina. This spacious residence offers 148 m² of internal living space, featuring three comfortable bedrooms and one modern bathroom. Located on the sixth floor of a seven-story building with elevator access, the apartment provides stunning panoramic views, including direct sea views from its seafront position.

The apartment comes fully furnished and is situated within a gated complex, ensuring your privacy and security. Built in 2014, it benefits from modern finishes, underfloor heating for year-round comfort, and access to exclusive communal facilities. Residents can enjoy a well-equipped gym and a refreshing swimming pool.

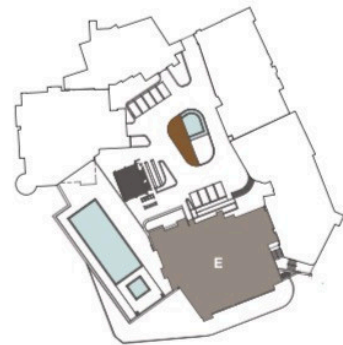
Limassol Marina is known for its vibrant atmosphere, elegant promenades, and luxury lifestyle, blending leisure with convenience. The area is surrounded by cafes, fine dining restaurants, shops, and essential amenities—all within walking distance.

This property offers a unique opportunity to experience waterfront living at its finest. For more information or to arrange a viewing, please contact Lextrus Real Estate.



Floor plans

Castle Residences Building E



Siteplan



Sixth floor



Additional information

Facilities

Aircondition, Split system
Gym
Parking, Covered
Solar water heater

Elevator
Heating, Underfloor
Pool, Communal
Spa

Gated complex
Outdoor shower
Sauna
Storage

Features

24-hour security
Balcony, back
Bathroom underfloor heating
Bright
Combined kitchen and dining area
Double glazing
En suite bathroom
Entrance hall
Floor-to-ceiling windows
Heart of city center
Laminate flooring
Modern design
Near bus route
Parquet flooring
Roller blinds
Shower
Spacious rooms
Ventilation system
Wooden flooring

Alarm system
Balcony, front
Bicycle parking
CCTV
Courtyard
Easy access to main roads
Energy efficient doors/windows
Fire detector
Guest WC
Kitchen appliances
Lobby
Municipal water/sewage
Open plan
Pool view
Sea front
Shutters, electric
Thermal insulation
Veranda
Yacht berth

Balcony
Bath
Boat ramp
Ceramic tiles
Cul de sac
Elevated
Entrance gate, automated
Fitted wardrobes
Guestroom
Kitchen island
Luxury specifications
Near amenities
Panoramic view
Quiet area
Sea view
Sound insulation
Tile flooring
Walking distance to beach



Distances

Amenities

 30 m

Airport

 70 km

Sea

 20 m

Public transport

 200 m

Schools

 4 km

Resort

 50 m

Contact us



Elena Sokil

 (+357) 95759512

 lenasokil0@gmail.com

