



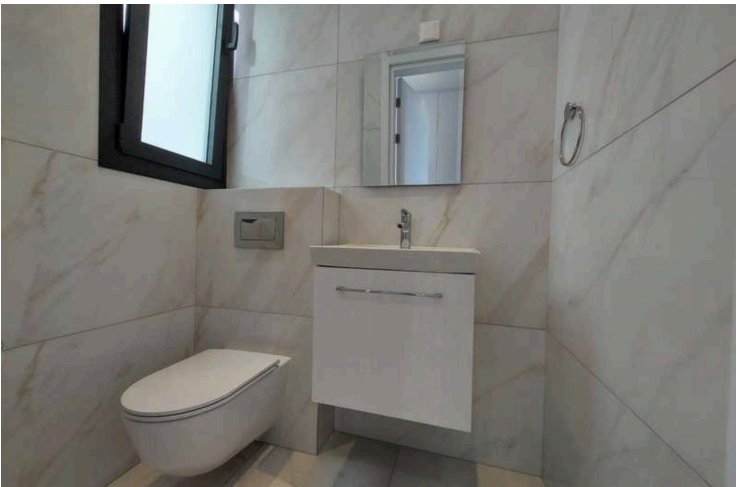
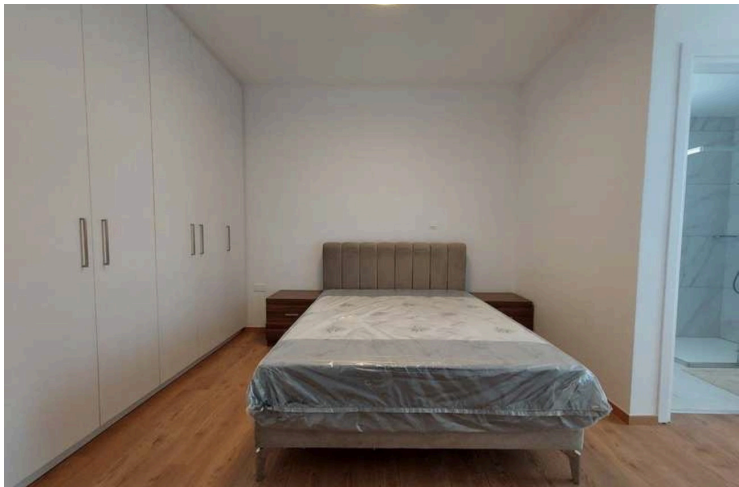
#16192

Modern Panthea Penthouse Apartment with Pool and Gym

📍 Panthea, Limassol

€5,300 /month





Overview

Specifications

Bedrooms



3

Bathrooms



3

Covered

122 m²

| | |
|-----------------|-------------------------|
| Type | Apartment |
| Showers | 3 |
| Covered veranda | 34 m² |
| Roof garden | 82 m² |
| Status | Key ready |

| | |
|--------------------------|------------------------|
| Year of construction | 2025 |
| Furnished | Fully furnished |
| Facade | Aluminium |
| Energy efficiency rating | A |

Description

Discover modern living in this stunning 3-bedroom, 3-bathroom penthouse, available for immediate rent in the desirable area of Panthea. This key-ready apartment offers a generous internal space of 122 m², designed for comfort and style. The property is located within a secure, gated complex and includes the convenience of a private elevator. Photovoltaic system for free electricity

Built in 2025, the apartment has been finished to an excellent standard with energy efficiency class A, ensuring lower energy costs and a comfortable living environment all year round. Enjoy luxurious features such as underfloor heating, a private swimming pool, a fully equipped gym, and breathtaking panoramic views of the city below.

Panthea is a well-established residential area known for its tranquil atmosphere and attractive hillside setting. Residents benefit from easy access to the main highway, local shops, schools, and all essential amenities, making it an ideal location for both families and professionals.

This penthouse is fully furnished with modern furniture, ready for you to move in and make it your home. With its private pool and city views, this property represents the best in stylish, convenient living.

For further information or to arrange a viewing, please contact Lextrus Real Estate today.



Additional information

Facilities

| | | |
|---------------------------|---------------------------------------|-------------------|
| Elevator | Gated complex | Gym |
| Heating, Underfloor | Indoor pool, Communal | Landscaped garden |
| Outdoor shower | Parking, Covered | Pool, Private |
| Solar photovoltaic panels | Solar photovoltaic panels (provision) | Storage |

Features

| | | |
|--------------------------|---------------------------|----------------|
| Balcony | City view | Double glazing |
| Easy access to highway | Easy access to main roads | Elevated |
| Entrance gate, automated | Kitchen appliances | Modern design |
| Near amenities | Near bus route | Panoramic view |
| Roof garden | Veranda | |

Contact us



Elena Sokil

☎ (+357) 95759512

✉ lenasokil0@gmail.com

