



#16081

Modern Three Bedroom Sea View Apartment in Quiet Panthea Area

📍 Panthea, Limassol




€650,000





Overview

Specifications

Bedrooms		Bathrooms		Covered	
 3		 1		 114 m ²	
Type		Apartment			
Showers		1			
Toilets		3			
Covered veranda		34 m ²			
Status		Resale			
Year of construction		2024			
Furnished		Fully furnished			
Energy efficiency rating		 A			

Description

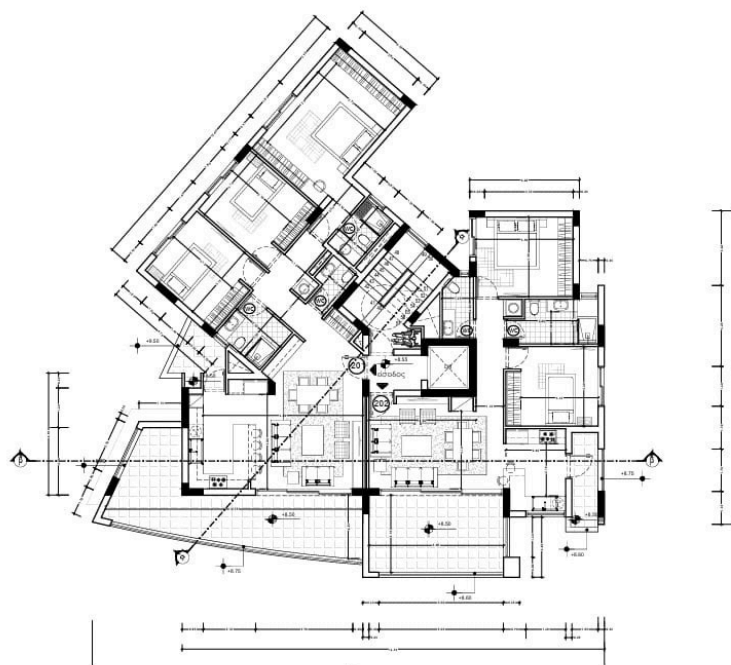
For sale is a spacious, modern resale apartment in the sought-after area of Panthea. Offering 114 square meters of internal living space, this home features three comfortable bedrooms and a stylish bathroom. Located on the second floor in a three-story building with an elevator, this property is designed for convenient, easy living.

The apartment comes fully furnished with contemporary décor and high-quality finishes. You'll enjoy stunning panoramic views, including city, mountain, and sea vistas—perfect for relaxing at home or entertaining guests. The property holds an Energy Efficiency A rating, so you can expect very low running costs and a modern, eco-friendly living environment.

Panthea is a desirable, peaceful neighborhood known for its green surroundings and beautiful scenery. Residents benefit from quick access to schools, parks, and everyday amenities while enjoying a sense of privacy and security in this gated complex.

This unique opportunity is presented by Lextrus Real Estate—contact us today to book your viewing and make this exceptional apartment your new home.





ΚΑΤΟΨΗ 2ου ΟΡΟΦΟΥ
Κλίμακα 1:100



argyrides architects

argyridesandreas@gmail.com 99-211631/25-563262
Pofos Avenue 13, Alexandrian Tower Office 22, Limassol

Σημειώσεις

- Υψόμετρο Υψόμετρο +4.00
- Προτεινόμενο Υψόμετρο +4.00
- Προτεινόμενο Υψόμετρο Σηθαιών +4.00
- Ισομετρία Καμπύλες +4.00
- Υψόμετρο Υψόμετρο Σηθαιών +4.00
- Υψόμετρο / Ισομετρία Σηθαιών +4.00
- Αρμός σιδηρού +4.00
- Υψόμετρο / Ισομετρία Σηθαιών +4.00
- 45° Διάγωνα / Ισομετρία Σηθαιών +4.00

Όνομα έργου

ΠΟΛΥΚΑΤΟΙΚΙΑ ΗΡΑΚΛΗΣ ΚΑΡΑΛΑΙ/ΠΟΥΣ

αριθμός έργου

18013

σχεδίαση

α.α

έλεγχος

α.α

ημερομηνία

04.11.2020

κλίμακα

A2-1/100

τίτλος σχεδίου

ΚΑΤΟΨΗ ΔΕΥΤΕΡΟΥ ΟΡΟΦΟΥ

αριθμός σχεδίου



4



Additional information

Facilities

Aircondition, Split system

Parking, Covered

Elevator

Solar water heater

Gated complex

Storage

Features

Balcony

Bright

Double glazing

En suite shower

Guest WC

Laminate flooring

Municipal water/sewage

Panoramic view

Roller blinds

Shutters, electric

Tile flooring

Bath

City view

Easy access to main roads

Entrance gate

Kitchen appliances

Modern design

Next to green area

Quiet area

Sea view

Sound insulation

Ventilation system

Bathroom underfloor heating

Combined kitchen and dining area

Elevated

Fitted wardrobes

Kitchen island

Mountain view

Open plan

Rental potential

Shower

Spacious rooms

Water softener

Distances

Amenities



1.2 km

Airport



65 km

Sea



4.2 km

Schools



600 m

Resort



6 km

Contact us



Elena Sokil

☎ (+357) 95759512

✉ lenasokil0@gmail.com

