



#16003

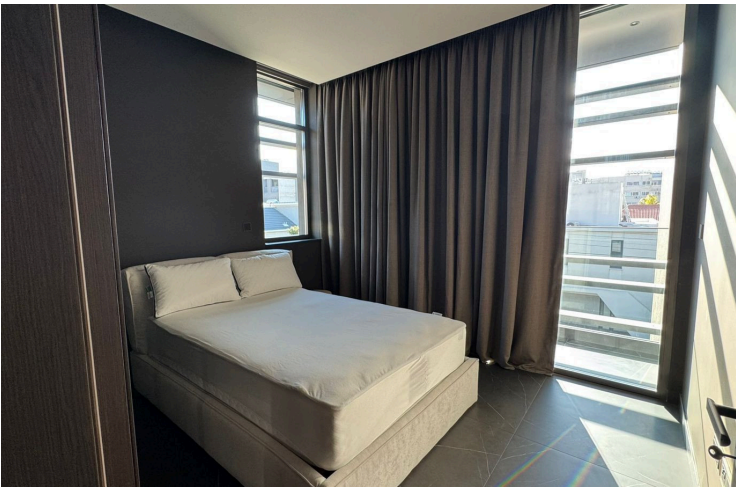
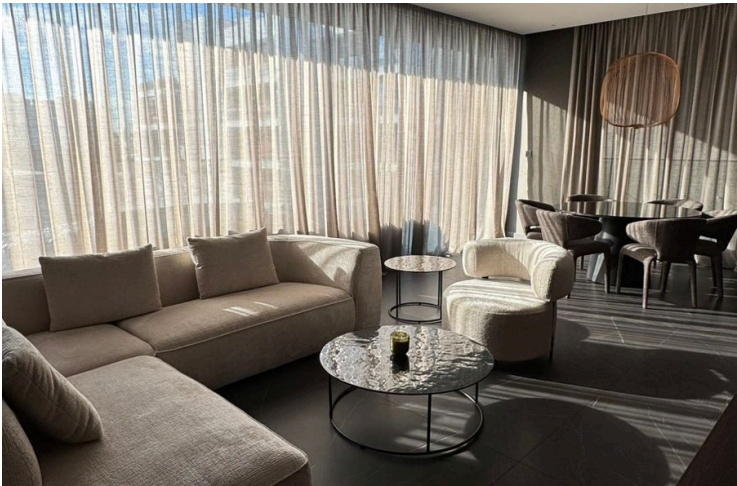
# Modern Two Bedroom Apartment in Central Germasogeia

📍 Germasogeia, Limassol

€3,700 /month










# Overview

## Specifications

Bedrooms		Covered	
 2		 115 m <sup>2</sup>	
Type	Apartment	Year of construction	2025
Showers	2	Furnished	Fully furnished
Toilets	2	Energy efficiency rating	 A
Status	Key ready		

## Description

This modern, key-ready apartment is available for rent in the popular area of Germasogeia. With an internal space of 115 m2, this home features two comfortable bedrooms and is situated on the first floor of a three-story building with elevator access for added convenience. Built in 2025, the apartment is fully furnished and thoughtfully designed for contemporary living.

Enjoy the comfort of underfloor heating and a central AC system, ensuring a pleasant atmosphere all year round. The energy efficiency class A rating helps to keep running costs low. The apartment offers a bright living area with city views, creating a welcoming and stylish environment.

Located within a secure, gated complex, this property provides both privacy and peace of mind. The location in Germasogeia offers easy access to the highway and is close to all essential amenities, including shops, cafes, and leisure spots. Germasogeia is known for its vibrant lifestyle, scenic surroundings, and convenient city access.

This property is presented by Lextrus Real Estate. If you are seeking a modern, turnkey home in a prime location, this apartment is an excellent choice. Contact us today to arrange a viewing.



# Additional information







## Facilities

Aircondition, Central system	Elevator	Gated complex
Heating, Underfloor	Parking, Covered	Solar photovoltaic panels
Solar water heater	Storage	

## Features

Alarm system	Balcony	Bathroom underfloor heating
Bright	Ceramic tiles	City view
Combined kitchen and dining area	Door screen	Double glazing
Easy access to highway	Easy access to main roads	Elevated
En suite shower	Energy efficient doors/windows	Entrance gate, automated
Entrance hall	Fire detector	Fitted wardrobes
Floor-to-ceiling windows	Granite flooring	Kitchen appliances
Laminate flooring	Modern design	Municipal water/sewage
Near amenities	Near bus route	Next to green area
Office	Open plan	Quiet area
Shower	Sound insulation	Stone flooring
Ventilation system	Walk-in closet	Walking distance to beach

## Distances


Amenities  300 m	Airport  68 km	Sea  600 m
Public transport  500 m	Schools  1 km	Resort  4 km



# Contact us



**Elena Sokil**

 (+357) 95759512

 lenasokil0@gmail.com

