



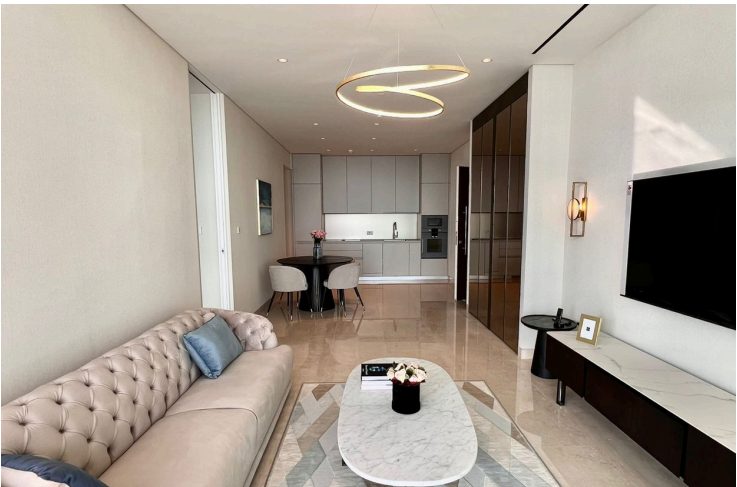
#15998

Hi- End Seafront Apartment in Vibrant Mouttagiaka Area

📍 Mouttagiaka Tourist Area, Limassol


€5,500 /month





Overview

Specifications

Bedrooms		Bathrooms		Covered	
 1		 2		 106 m ²	
Type		Apartment		Year of construction	
Toilets		2		Furnished	
Status		Key ready		Energy efficiency rating	
				2023	
				Fully furnished	
				 A	

Description

1 bedroom apartment for rent in The Ritz Carlton Limassol available for rent, minimum 1 year agreement. Fully furnished, luxury furniture , two bathrooms, sea view, amenities including outdoor and indoor swimming pool, 2 types of sauna, spa, tennis courts, padel court, basketball court and football, kids playground, privet cinema, golf simulator and kids club. Concierge and Novikov restaurant in the building. One underground parking space including price.



| Additional information

Facilities

Aircondition, Central system	Childrens playground	Clubhouse
Elevator	Gated complex	Gym
Heating, Underfloor	Indoor pool, Communal, heated	Landscaped garden
Maid's room	Outdoor shower	Parking, Underground
Pergola	Pool, Communal, heated	Sauna
Solar photovoltaic panels	Solar water heater	Spa
Storage	Tennis court	



Features

24-hour security	Alarm system	Balcony
Balcony, front	Bath	Bathroom underfloor heating
Bright	CCTV	Ceramic tiles
Combined kitchen and dining area	Concierge	Courtyard
Door screen	Double glazing	Easy access to highway
Easy access to main roads	Elevated	En suite shower
Energy efficient doors/windows	Entrance gate, automated	Entrance hall
Fire detector	Fireproof entrance doors	Fitted wardrobes
Floor-to-ceiling windows	Fly screens	Garden, large
Guest WC	High ceilings	Kitchen appliances
Lobby	Luxury specifications	Marble flooring
Marble stairs	Modern design	Municipal water/sewage
Near amenities	Near bus route	Next to green area
Open plan	Panoramic view	Parquet flooring
Play room	Pool bar	Quiet area
Retaining wall	Sea front	Sea view
Semi-solid parquet flooring	Shower	Sound insulation
Spacious rooms	Steam bath	Thermal insulation
Tile flooring	Ventilation system	Veranda
Walking distance to beach	Wooden flooring	

Distances


Amenities  50 m	Airport  62 km	Sea  50 m
Public transport  50 m	Schools  2 km	Resort  3 km



Contact us



Elena Sokil

 (+357) 95759512

 lenasokil0@gmail.com

