



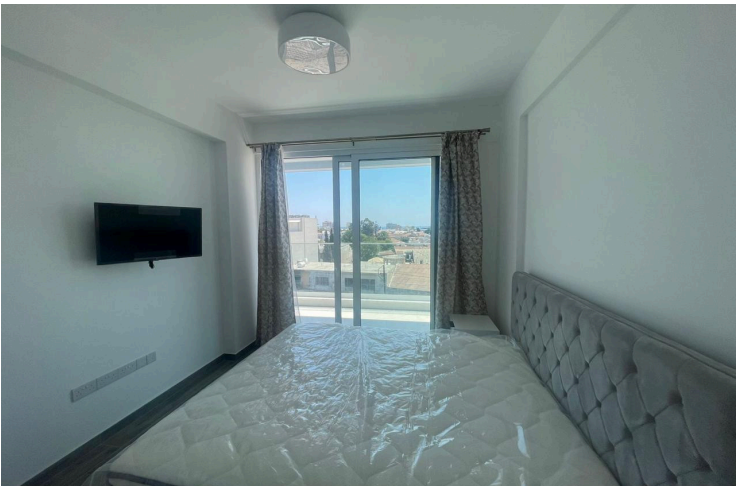
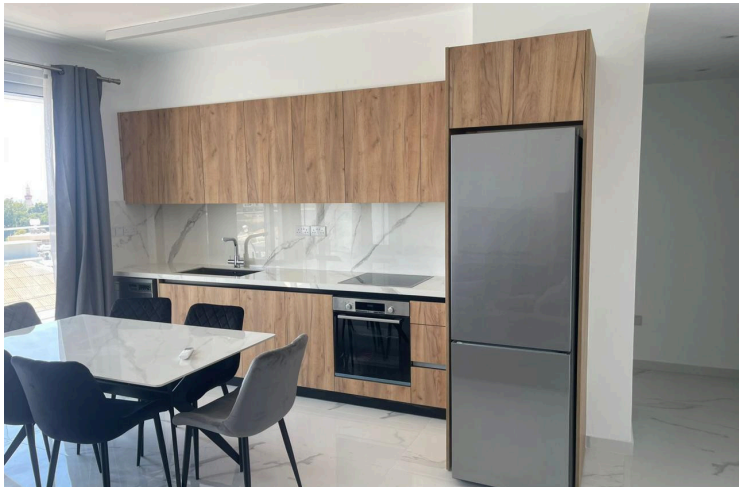
#15995

# Modern Two Bedroom Sea View Apartment in Central Katholiki

📍 Katholiki, Limassol

€3,000 /month







# Overview

## Specifications

Bedrooms		Covered	
 2		 90 m <sup>2</sup>	
Type	Apartment	Status	Key ready
Showers	2	Year of construction	2024
Toilets	3	Furnished	Fully furnished
Covered veranda	35 m <sup>2</sup>	Energy efficiency rating	 A

## Description

Live in the heart of Limassol and experience unparalleled luxury and convenience in this stunning fully furnished 2-bedroom apartment. Offering panoramic 180-degree sea views, overlooking the Limassol Marina, Old Port, and the vibrant cityscape, this home is a perfect blend of elegance, comfort, and modern living.

### Key Features:

- ? Prime Location – Situated in the bustling centre of Limassol, with top restaurants, cafes, and entertainment at your doorstep.
- ? Breathtaking Views – Enjoy uninterrupted sea, marina, and city views from your expansive 35m<sup>2</sup> balcony
- ? Spacious & Stylish – A generous indoor area of 90m<sup>2</sup> layout with two en-suite bedrooms, a separate WC for guests, a separate living area, and floor-to-ceiling windows that flood the space with natural light
- ? Premium Comfort – Underfloor heating & air conditioning in every room for year-round comfort
- ? Fully Furnished – Move in effortlessly with modern, high-end furniture, two TVs, and all essential electrical appliances
- ? Ultimate Peace & Quiet – Double-glazed windows in all rooms ensure a serene living environment
- ? Hassle-Free Living – Fibre-optic internet & Common Expenses included in the rental price



# Additional information

## Facilities

Aircondition, Split system

Heating, Underfloor

Storage

Elevator

Parking, Covered

Gated complex

Solar water heater

## Features

Balcony

City view

Double glazing

En suite shower

Entrance hall

Guest WC

Laundry room

Near amenities

Open plan

Quiet area

Spacious rooms

Ventilation system

Bathroom underfloor heating

Combined kitchen and dining area

Easy access to main roads

Energy efficient doors/windows

Fitted wardrobes

Kitchen appliances

Modern design

Near bus route

Panoramic view

Sea view

Tile flooring

Bright

Courtyard

Elevated

Entrance gate, automated

Floor-to-ceiling windows

Laminate flooring

Municipal water/sewage

Next to green area

Pets allowed

Shower

Utility room

## Distances

Amenities



300 m

Airport



58 km

Sea



1.5 km

Public transport



400 m

Schools



4 km

Resort




1.2 km



# Contact us



**Elena Sokil**

 (+357) 95759512

 lenasokil0@gmail.com

