



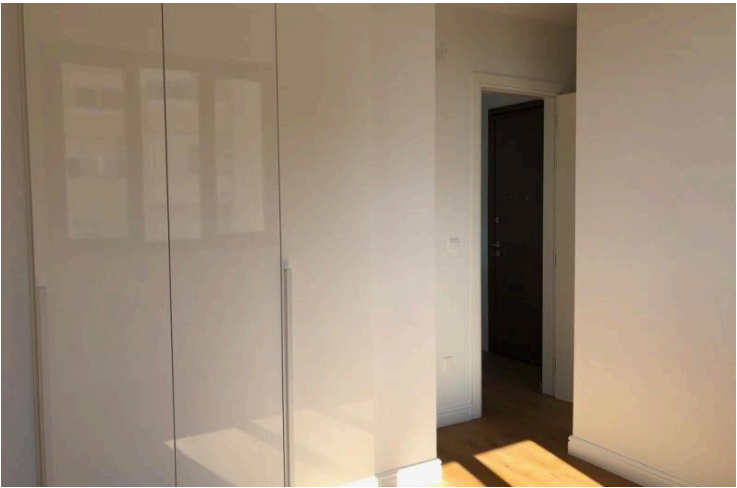
#15913

# Penthouse Three Bedroom Apartment with Pool and Sea View Germasogeia

📍 Germasogeia, Limassol



€4,800 /month





# Overview

## Specifications

Bedrooms		Bathrooms		Covered	
 3		 1		 121.2 m <sup>2</sup>	
Type		Apartment		Status	
Showers		2		Year of construction	
Toilets		3		Furnished	
Covered veranda		25.8 m <sup>2</sup>		Energy efficiency rating	
				Key ready	
				2018	
				Unfurnished	
				 A+	

## Description

For rent: a spacious, key-ready penthouse apartment in the desirable area of Germasogeia. With an internal space of 121.2 m<sup>2</sup>, this apartment features three comfortable bedrooms and one modern bathroom. Located on the top floor with elevator access, it offers privacy as well as convenience.

The apartment is part of a secure, gated complex built in 2018. It boasts its own private swimming pool, perfect for relaxing or entertaining guests. Enjoy breathtaking city, panoramic, and sea views from your home. The property has excellent energy efficiency with an A+ rating, ensuring low energy costs year-round. The apartment is unfurnished, giving you the chance to make the space your own.

Germasogeia is well known for its blend of natural beauty and easy access to urban amenities. Residents enjoy a peaceful setting with nearby shops, restaurants, and schools. The area is also close to the highway, offering quick connections to the rest of the city.

This outstanding rental opportunity is brought to you by Lextrus Real Estate. Contact us today to arrange a viewing or for more details.



# Additional information

## Facilities

Aircondition, Split system

Maid's room

Pool, Private

Elevator

Outdoor shower

Solar water heater

Gated complex

Parking, Covered

Storage

## Features

Balcony

Bright

Combined kitchen and dining area

Easy access to highway

En suite bathroom

Entrance hall

Garden

Internal stairs

Kitchenette

Luxury specifications

Near amenities

Open plan

Parquet flooring

Quiet area

Separate dining area

Spacious rooms

Thermal insulation

Ventilation system

Barbeque

Ceramic tiles

Courtyard

Easy access to main roads

Energy efficient doors/windows

Fitted wardrobes

Granite flooring

Irrigation system

Laundry room

Modern design

Near bus route

Outdoor kitchen

Pool view

Roof garden

Shower

Spiral staircase

Tile flooring

Veranda, large

Bath

City view

Double glazing

Elevated

Entrance gate, automated

Floor-to-ceiling windows

Guest WC

Kitchen appliances

Lobby

Municipal water/sewage

Next to green area

Panoramic view

Quartz flooring

Sea view

Sound insulation

Steel flooring

Utility room



# Distances

Amenities

 200 m

Airport

 67 km

Sea

 500 m

Public transport

 300 m

Schools

 1 km

Resort

 4 km

# Contact us



**Elena Sokil**

 (+357) 95759512

 lenasokil0@gmail.com

