



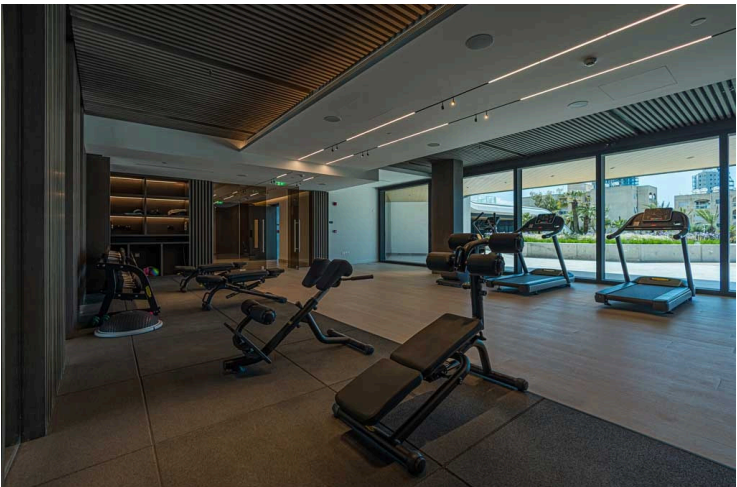
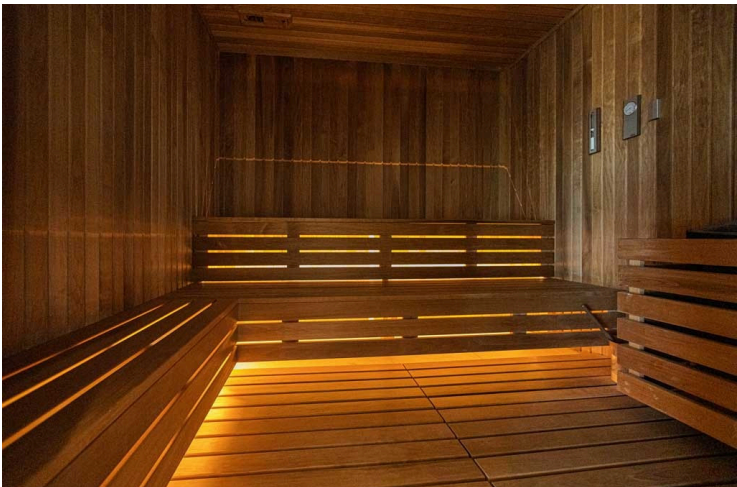
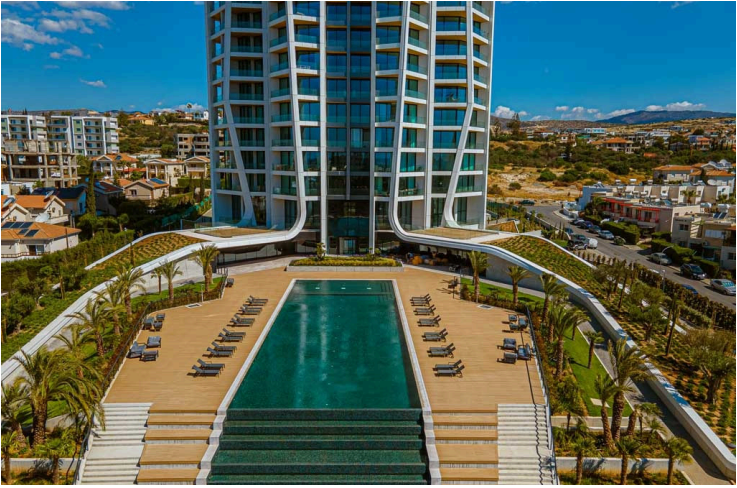
#15900

High - End Two Bedroom Apartment in Coastal Germasogeia Area

📍 Germasogeia Tourist Area, Limassol





€6,000 /month





Overview

Specifications

Bedrooms		Bathrooms		Covered	
 2		 1		 90.8 m ²	
Type		Apartment			
Showers		1			
Toilets		2			
Covered veranda		26.8 m ²			
Status		Key ready			
Year of construction		2022			
Furnished		Fully furnished			
Communal charge frequency		Monthly			
Energy efficiency rating		 A+			

Description

Discover modern living in this key-ready 2-bedroom apartment, offering 90.8 m² of thoughtfully designed space. Located on the 10th floor of a secure, gated complex, this stylish home features an open-plan layout with a spacious living area, a fully equipped kitchen, and elegant furnishings throughout. The panoramic windows provide breathtaking sea views, letting in natural light and fresh air.

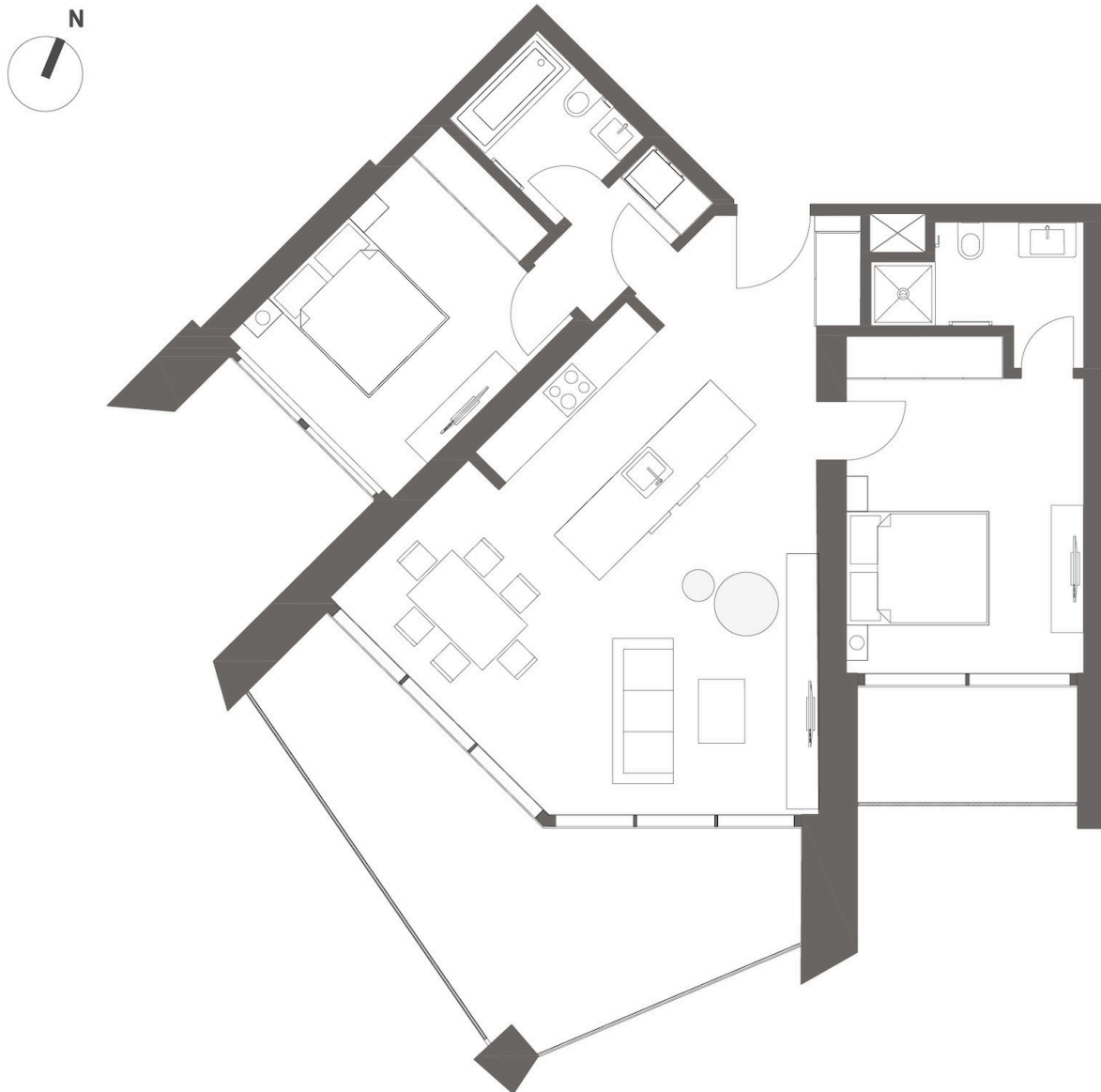
This apartment boasts a high energy efficiency rating (A+), underfloor heating, and a central AC system for year-round comfort. Residents can enjoy exclusive access to the communal swimming pool and gym, perfect for a healthy and active lifestyle. A private basement space is also included for additional storage.

The building is situated in the vibrant Germasogeia Tourist Area, popular for its lively atmosphere, beautiful beaches, trendy cafes, shops, and easy access to the highway. Enjoy being close to all essential amenities, while living in a peaceful, coastal environment.

Built in 2022, this apartment is move-in ready and ideal for professionals or families seeking comfort and convenience. Experience exceptional living with panoramic and sea views. This rental opportunity is brought to you by Lextrus Real Estate.



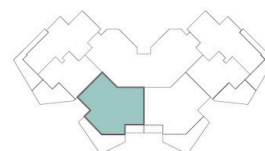
Floor plans



2 BEDROOM APARTMENT

INDOOR AREA 91.40 - 92.00 sq m
Covered veranda From 22.90 to 28.35 sq m

Living / Dining / Kitchen	8.40 m x 8.00 m
Master Bedroom	4.95 m x 3.40 m
En-Suite	1.50 m x 3.00 m
Bedroom 01	4.25 m x 3.25 m
Bathroom 01	1.80 m x 2.10 m



Additional information

Facilities

Aircondition, Central system

Elevator

Heating, Underfloor

Maid's room

Pool, Communal

Solar water heater

Childrens playground

Gated complex

Indoor pool, Communal, heated

Outdoor shower

Sauna

Storage

Clubhouse

Gym

Landscaped garden

Parking, Underground

Solar photovoltaic panels

Tennis court

Features

24-hour security

Bathroom underfloor heating

Combined kitchen and dining area

Double glazing

Elevated

Entrance hall

Floor-to-ceiling windows

Kitchen appliances

Municipal water/sewage

Next to green area

Parquet flooring

Quiet area

Shower

Ventilation system

Alarm system

Bright

Courtyard

Easy access to highway

Energy efficient doors/windows

Fire detector

Garden, large

Lobby

Near amenities

Open plan

Play room

Roof garden

Sound insulation

Veranda

Balcony

Ceramic tiles

Door screen

Easy access to main roads

Entrance gate, automated

Fitted wardrobes

High ceilings

Modern design

Near bus route

Panoramic view

Pool view

Sea view

Tile flooring

Walking distance to beach



Distances

Amenities

 50 m

Airport

 57 km

Sea

 200 m

Public transport

 100 m

Schools

 2 km


Resort

 4 km

Contact us



Elena Sokil

 (+357) 95759512

 lenasokil0@gmail.com

