



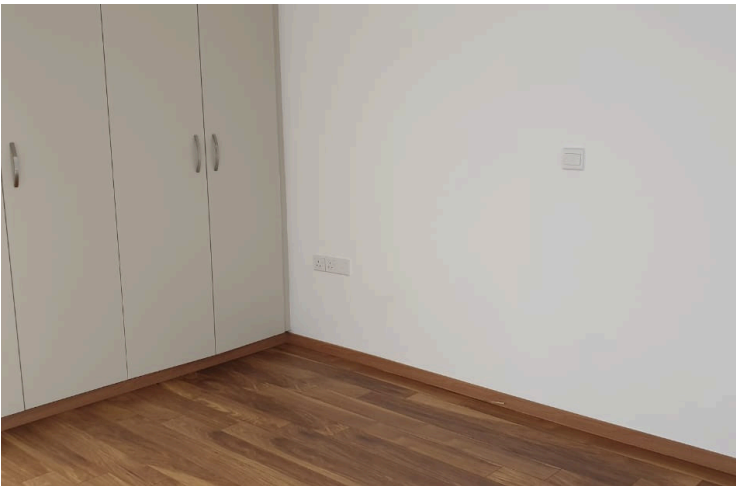
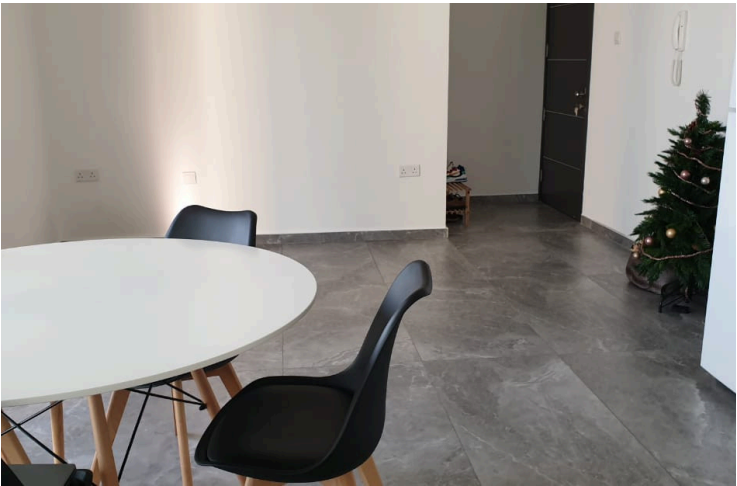
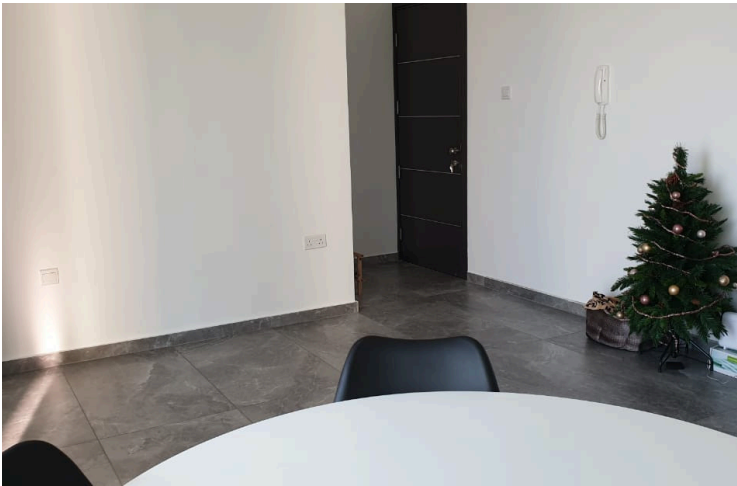
#15726

Modern Furnished 2 Bedroom Apartment in Zakaki

 Zakaki, Limassol





€2,200 /month





Overview

Specifications

Bedrooms		Bathrooms		Covered	
 2		 1		 90 m ²	
Type		Apartment			
Showers		1			
Toilets		2			
Covered veranda		30 m ²			
Status		Key ready			
Year of construction		2022			
Furnished		Fully furnished			
Energy efficiency rating		 A			

Description

Discover modern living in this stylish, key-ready apartment for rent in Zakaki. Located on the second floor of a well-maintained, three-story building with elevator access, this fully furnished home offers 90 square meters of comfortable internal space. The layout features two spacious bedrooms, one contemporary bathroom, and an open-plan living area designed for both relaxation and entertaining.

The apartment enjoys excellent energy efficiency (Grade A), double-glazed windows, and quality finishes throughout. Large windows provide plenty of natural light and showcase inspiring panoramic views over the city and the picturesque countryside beyond.

Zakaki is a vibrant area favored for its convenient access to the highway, making travel across the city effortless. You'll be within walking distance of supermarkets, cafes, shops, and leisure facilities. The neighborhood is secure, peaceful, and part of a gated complex, offering privacy and safety.

Built in 2022, this property combines modern design with both city and country views. With all the essentials in place, you can simply move in and feel at home. For more information or to arrange a viewing, contact Lextrus Real Estate today.



Additional information

Facilities

Aircondition, Split system

Parking, Covered

Elevator

Solar water heater

Gated complex

Storage

Features

Balcony, front

Ceramic tiles

Country view

Easy access to highway

En suite shower

High ceilings

Modern design

Next to green area

Quiet area

Spacious rooms

Veranda

Bath

City view

Courtyard

Easy access to main roads

Fitted wardrobes

Kitchen appliances

Municipal water/sewage

Open plan

Shower

Tile flooring

Bright

Combined kitchen and dining area

Double glazing

Elevated

Floor-to-ceiling windows

Laminate flooring

Near amenities

Panoramic view

Sound insulation

Ventilation system

Distances

Amenities



700 m

Airport



58 km

Sea



2 km

Public transport



700 m

Schools



2 km

Resort



800 m

Contact us



Elena Sokil

☎ (+357) 95759512

✉ lenasokil0@gmail.com

