



#15713

APARTMENT BUILDING FOR SALE IN SKALA, LARNACA (15713)

📍 Skala, Larnaca

€1,100,000






Overview

Specifications

Covered

 1100 m²

Type	Apartment Building
Status	Resale
Year of construction	1986
Furnished	Unfurnished

Structure	Concrete
Facade	Concrete
Energy efficiency rating	 B

Description

This mixed-use apartment building is located in the Skala area of Larnaca, a central and well-established district with residential and commercial activity. The property was constructed in 1986 and is arranged over three levels.

The building comprises a total of 10 units, including 8 unfurnished apartments on the upper floors and 2 ground-floor shops with street frontage.

Total covered area: approximately 1,100 m²

Plot size: 363 m²

The apartments feature functional layouts with living/dining areas, kitchens, bathrooms, bedrooms, and covered and uncovered verandas, allowing for natural light and ventilation. The commercial units are suitable for retail or service use and benefit from independent access.

The property includes 2 uncovered parking spaces at ground level. Access to the upper floors is via staircase only (no elevator). Electricity, water, and sewerage connections are available.

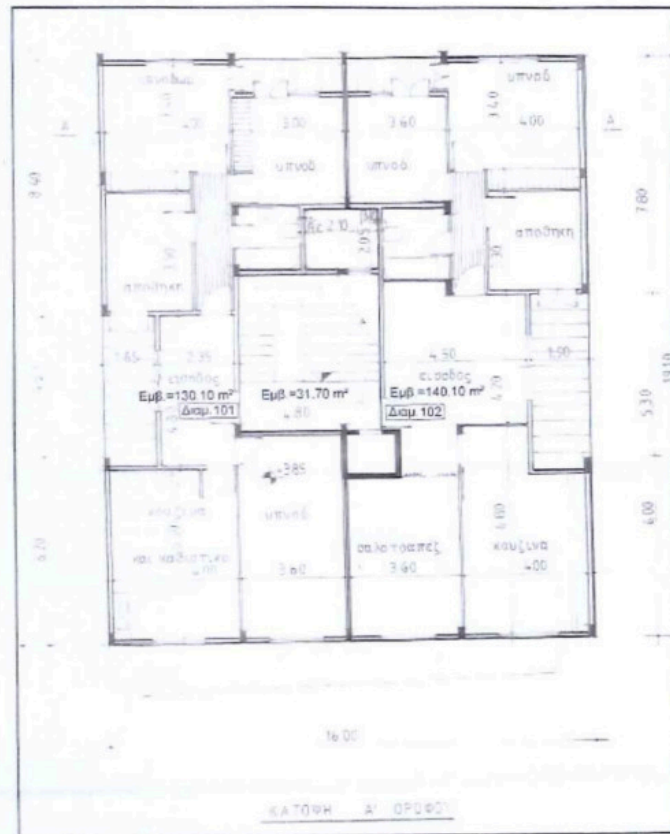
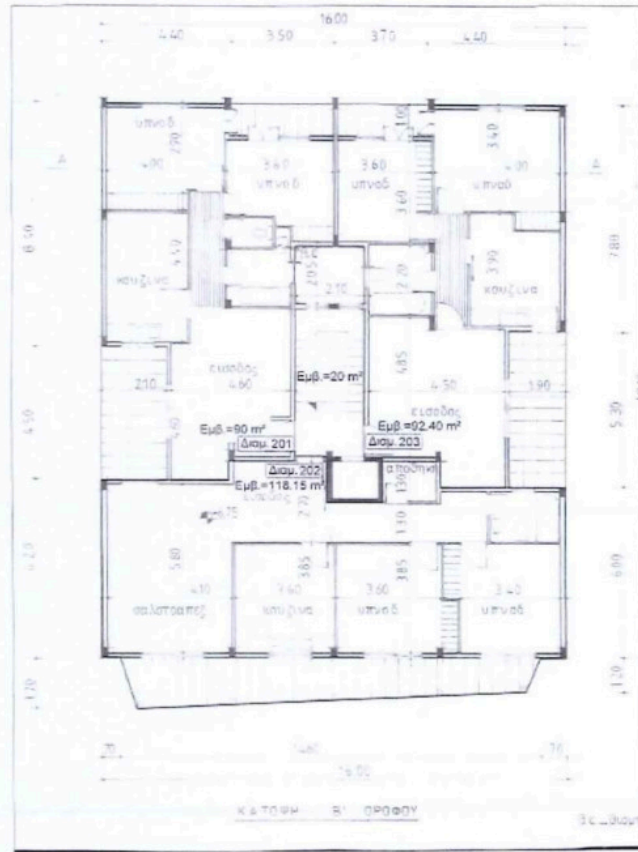
Important Legal & Planning Information

The building has a building permit up to the 2nd floor

To legalize or obtain a permit for the 3rd floor, an additional building density coefficient of approximately 30% must be purchased



Floor plans



Additional information

Facilities

Aircondition, Split system

Heating, Split system

Parking, Uncovered

Features

Balcony

Bright

Easy access to main roads

High ceilings

Internal stairs

Investment opportunity

Near amenities

Pressurized water system

Quiet area

Rental potential

Spacious rooms

Veranda

Walking distance to beach

Distances

Amenities



1.3 km

Airport



8.4 km

Sea



1 km

Schools



1.4 km

Resort




750 m

Contact us



George Sergiou

 (+357) 94055813

 info@lextrusrealestate.com

