



#15710

Prestigious Luxury Residence – Faneromeni Area, Larnaca (15710)

📍 Faneromeni, Larnaca

€2,500,000 +VAT






Overview

Specifications

Covered

 625 m²

Type	Apartment Building
Status	Under construction
Year of construction	2026
Furnished	Unfurnished

Structure	Concrete
Facade	Concrete
Communal charge frequency	Monthly
Energy efficiency rating	 A

Description

Prestigious Luxury Residence – Faneromeni Area, Larnaca (15710)

Price: €2,500,000

An exceptional opportunity to acquire a landmark residential development in the highly coveted Faneromeni area of Larnaca, one of the city's most prestigious and historically celebrated locations.

This exclusive residence has been meticulously designed by a team of renowned architects, engineers, and consultants, with a strong focus on refined aesthetics, functionality, and superior living standards. The building comprises only four floors, offering a sense of privacy and exclusivity rarely found in central urban developments.

The development consists of six elegant 2-bedroom apartments and a luxurious full-floor 3-bedroom penthouse occupying the entire fourth floor. All units are thoughtfully designed to meet the expectations of discerning homeowners and investors alike, making the project ideal for high-end permanent living or premium short- and long-term rentals.

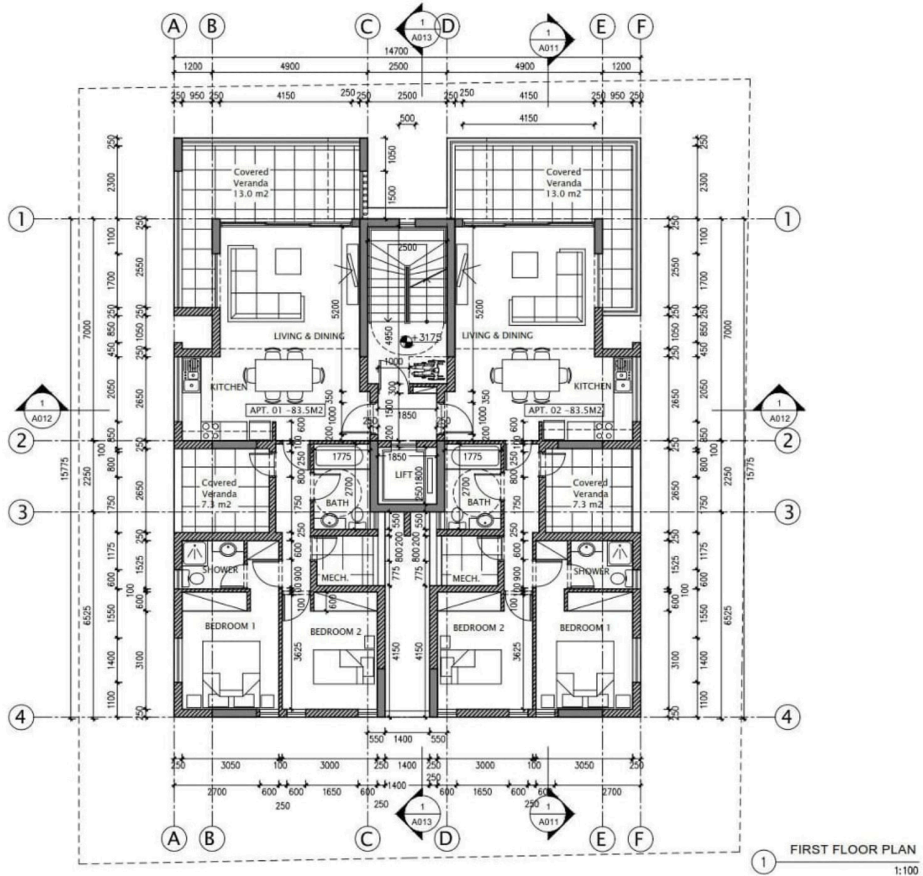
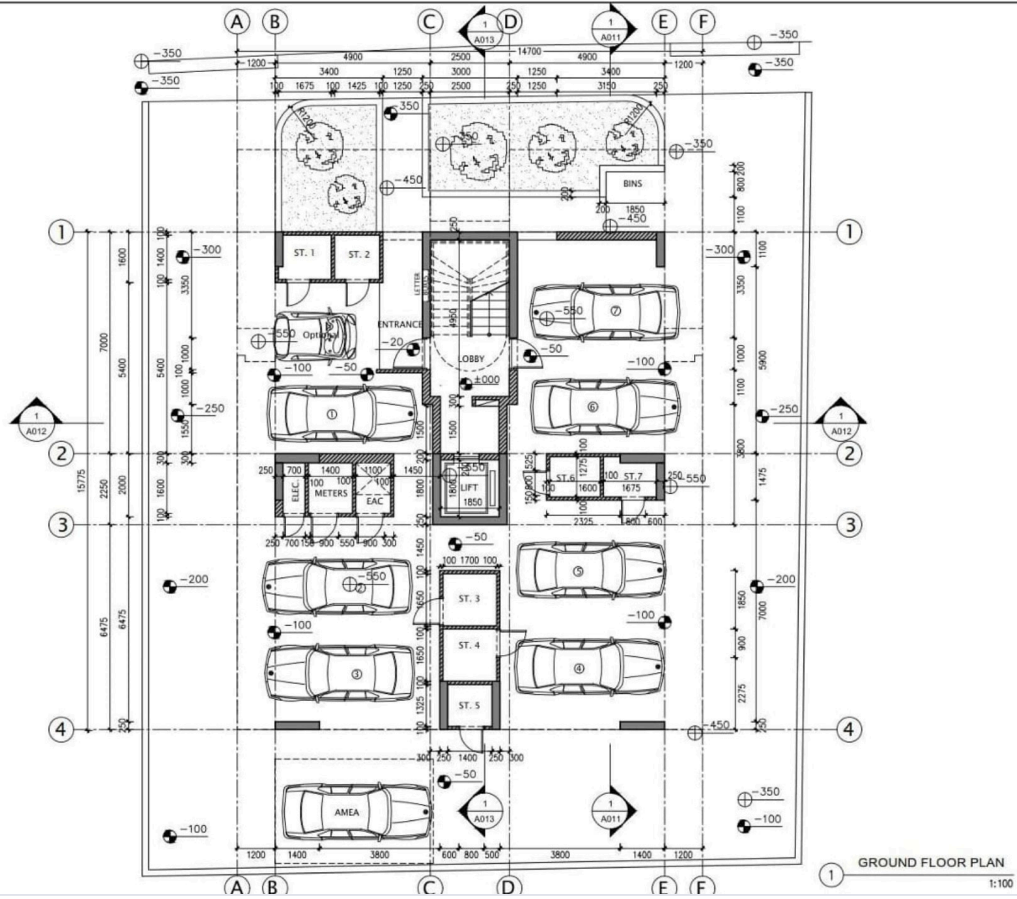
Situated in the heart of Larnaca, residents enjoy immediate access to the city's finest lifestyle amenities. Within minutes are Downtown Larnaca, the boutiques and cafés of Finikoudes, Larnaca Marina, the vibrant Mackenzie beach and nightlife, and the pedestrian walkways of Pattichion Park and the Salt Lake.

Key Features:

Prime central location in Faneromeni



Floor plans



Additional information

Facilities

Aircondition, Provision

Parking, Covered

Elevator

Solar water heater

Heating, Provision

Storage

Features

City view

Easy access to main roads

Near bus route

Thermal insulation

Double glazing

Granite countertops

Roof garden

Veranda

Easy access to highway

Near amenities

Sound insulation

Distances

Amenities

 500 m

Airport

 5.6 km

Sea

 1.1 km

Public transport

 350 m


Schools

 450 m

Contact us



Stavroula Michail

 (+357) 99810880

 stavroulamichail.lextrus@gmail.com

