



#15478

Two-storey house in Panthea - Mesa Geitonia, Limassol (15478)

📍 Panthea, Limassol

€850,000





Overview

Specifications

Bedrooms

 3


Bathrooms

 2

Covered

 188 m²

Type	House
Toilets	3
Plot	361 m²
Covered veranda	21 m²
Uncovered veranda	95 m²
Covered parking	18 m²

Status	Resale
Title deed	Yes
Structure	Concrete
Facade	Concrete
Energy efficiency rating	 A

Description

A beautifully fully renovated two-storey house in Panthea - Mesa Geitonia, one of Limassol's most convenient residential areas, set on a 361 m² plot and offering spacious indoor-outdoor living. The house will be ready in March 2027.

The property features 188 m² internal area over 2 floors, comprising 3 bedrooms, 2 bathrooms (including 1 en-suite), plus a guest toilet—ideal for families or professionals seeking comfort and practicality. There is also fireplace.

Outdoor spaces are a true highlight, with a 95 m² uncovered veranda, 21 m² covered veranda, and Provision for BBQ Area: 7 m² — perfect for entertaining. An overflow swimming pool is available for an extra touch of luxury.

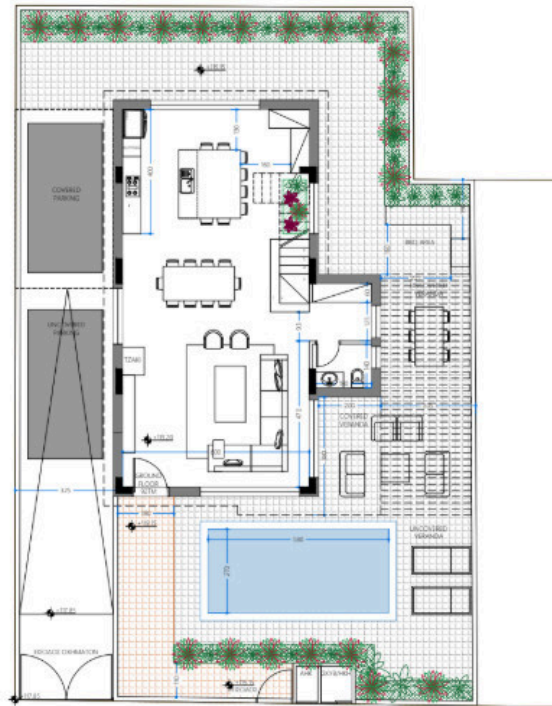
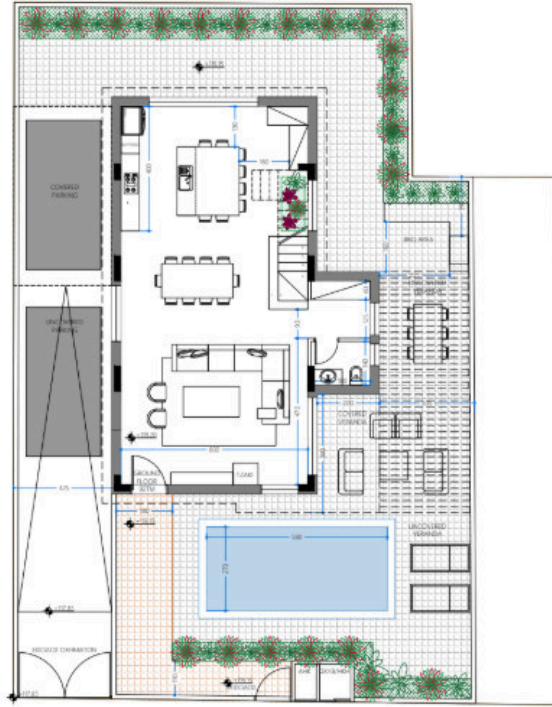
Located close to all amenities and offering easy access to main roads and the motorway network, making commuting and daily life effortless.

- ? Covered parking: 18 m²
- ? Uncovered parking: 18 m²
- ? Title deed available
- ? Delivery in 2027

Price: €850,000 (No VAT)



Floor plans



Additional information

Facilities

Aircondition, Provision

Heating, Underfloor

Parking, Covered

Pool, Optional

Storage

Features

Barbeque

Double glazing

Easy access to highway

Easy access to main roads

En suite bathroom

Garden

Guest WC

Indoor fireplace

Internal stairs

Mountain view

Near amenities

Quiet area


Shutters, electric (provision)

Veranda

Contact us



Christos Ioannides

 (+357) 95146944

 valantodc@gmail.com

