



#15471

? Ultra-Exclusive Signature Villa | Off-Plan | Oroklini Heights (15471)

📍 Oroklini, Larnaca





€2,740,000 +VAT





Overview

Specifications

Bedrooms		Bathrooms		Covered	
 5		 5		 366 m ²	
Type	Detached Villa				
Toilets	5				
Plot	650 m ²				
Status	Off plan				
Year of construction	2026				
Furnished	Unfurnished				
Structure	Concrete				
Facade	Concrete				
Energy efficiency rating	 A+				

Description

? Ultra-Exclusive Signature Villa | Off-Plan | Oroklini Heights (15471)

366 m² Interior | 650 m² Estate Plot | Sea Views | Private Sports Court

A residence created for the truly discerning. This architectural signature villa unfolds across three refined levels, seamlessly connected by a private lift, and positioned on an elevated estate plot within the elite enclave of Oroklini Heights. A statement of design, privacy, and resort-level living.

? A Masterpiece of Space & Design

Internal Area: 366 m²

Plot Size: 650 m²

Bedrooms: 4

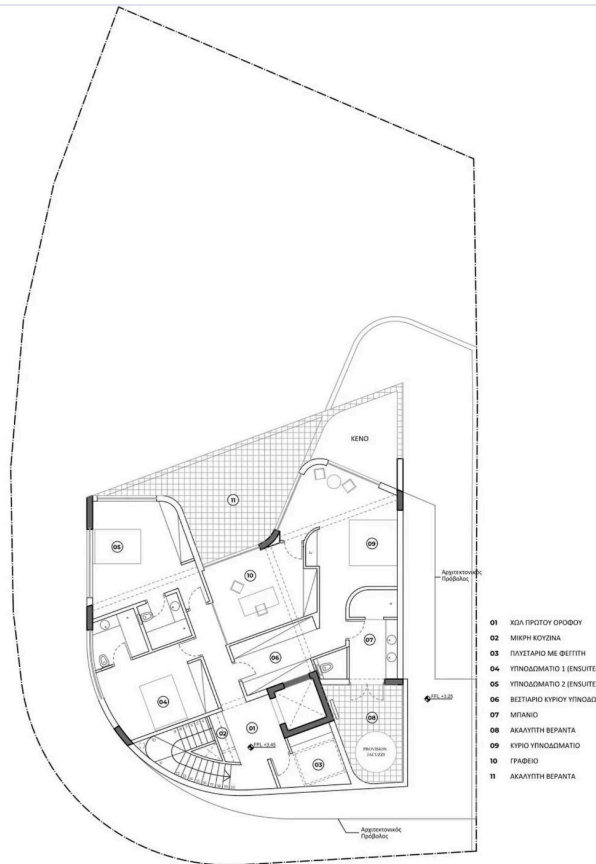
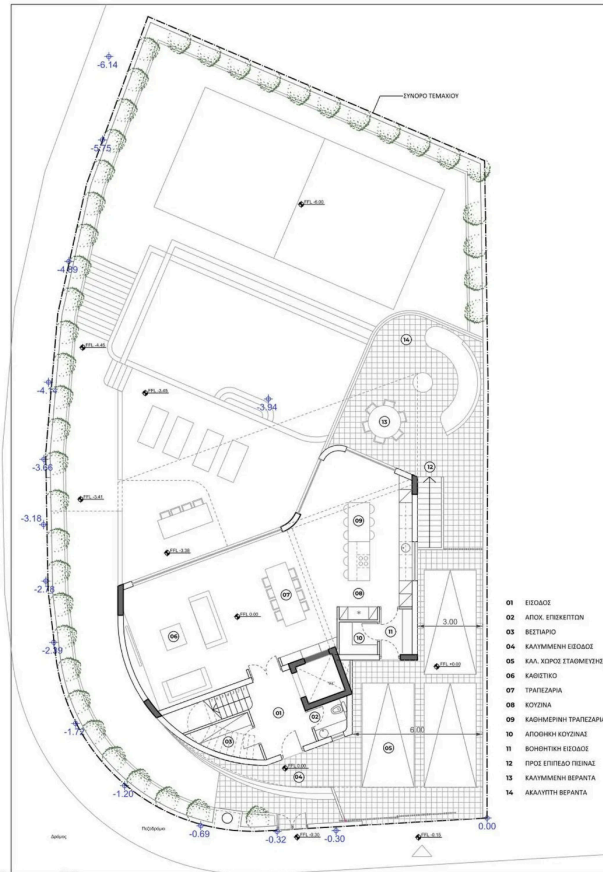
Bathrooms: 5+

Status: Under Construction (Off-Plan)

Furnishing: Unfurnished



Floor plans



Additional information

Facilities

Aircondition, Split system

Pool, Private

Heating, Central, electric

Storage

Parking, Covered

Features

Corner

Double glazing

Elevated

Garden

Guest WC

Modern design

Near bus route

Distressed property

Easy access to highway

En suite bathroom

Garden, large

Indoor fireplace

Mountain view

Quiet area

Door screen

Easy access to main roads

En suite shower

Ground floor bedroom

Kitchenette

Near amenities

Sea view

Distances

Amenities



200 m

Airport



22 km

Sea



2 km

Public transport



300 m

Schools



500 m

Resort



3 km

Contact us



Giorgos Tsiampos

📞 (+357) 99982112

✉️ infolextrusrealestate@gmail.com

