



#15469

Classic 6-bedroom villa in Agia Fyla – Panthea, Limassol (15469)

📍 Agia Fyla, Limassol

€2,850,000





Overview

Specifications

Bedrooms

 **6**

Bathrooms

 **4**

Covered

 **500 m²**

Type

Detached Villa

Toilets

5

Plot

732 m²

Covered veranda

86 m²

Status

Resale

Title deed

Yes

Description

Classic 6-bedroom villa in Agia Fyla – Panthea, Limassol, set in a quiet, prestigious neighborhood just a few minutes from the city center. It's being offered with renovation potential, with an estimated delivery timeline of ~8 months after renovation—meaning it can be transformed into a fully modern luxury home by the end of 2026.

What it offers:

Size: 500 sqm covered internal area + 86 sqm covered verandas

Plot: 732 sqm with a swimming pool and mature landscaped garden

Layout: 6 spacious bedrooms, 4 bathrooms + guest WC

Practical extras: 2 kitchens, 2 storage rooms, 2 parking spaces

Why it stands out

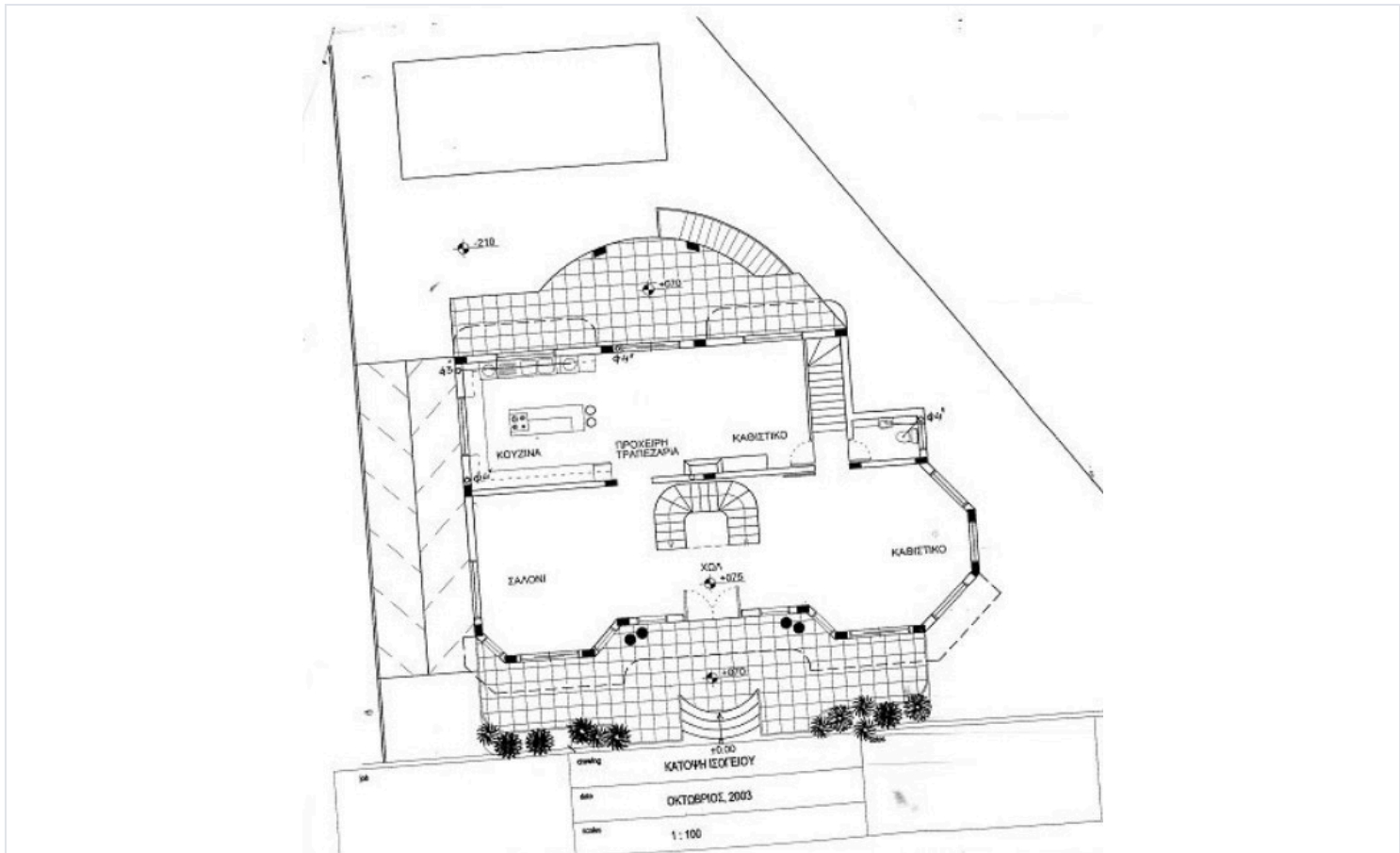
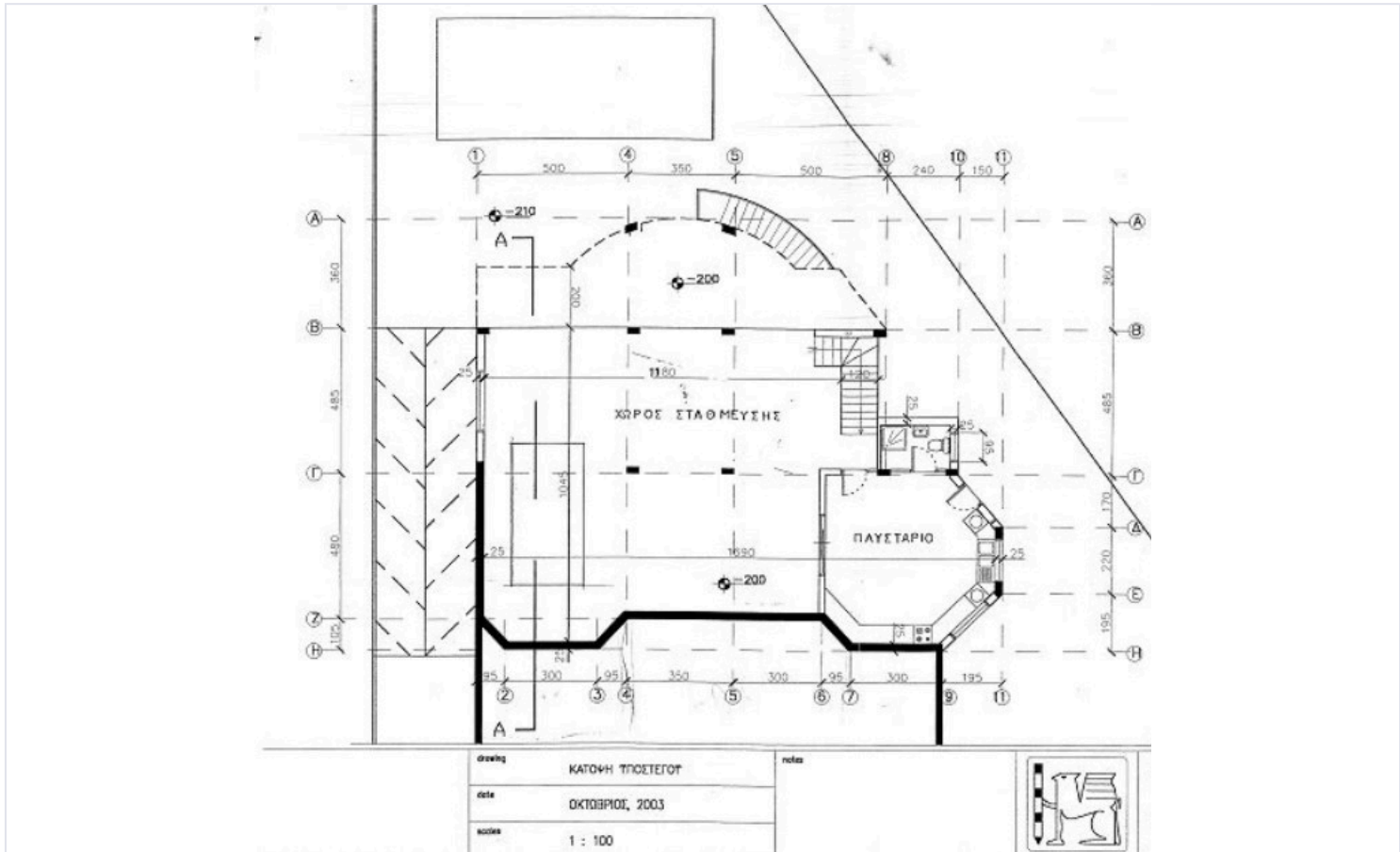
It's a large villa in a top Limassol area that already has strong fundamentals (space, plot, pool, privacy) and can become a high-end contemporary residence after renovation—ideal for families or investors targeting a premium location.

Title deed: Available

Price: €2,850,000 (No VAT)



Floor plans



Additional information

Facilities

Parking, Covered

Pool, Private

Storage

Features

Balcony

Easy access to highway

Easy access to main roads

Garden

Guest WC

Near amenities

Spacious rooms

Veranda

Contact us



Christos Ioannides

☎ (+357) 95146944

✉ valantodc@gmail.com

