



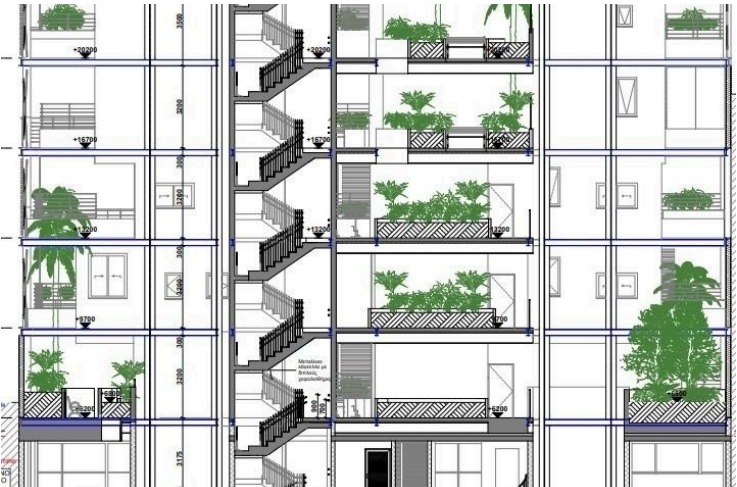
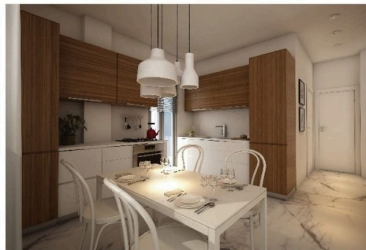
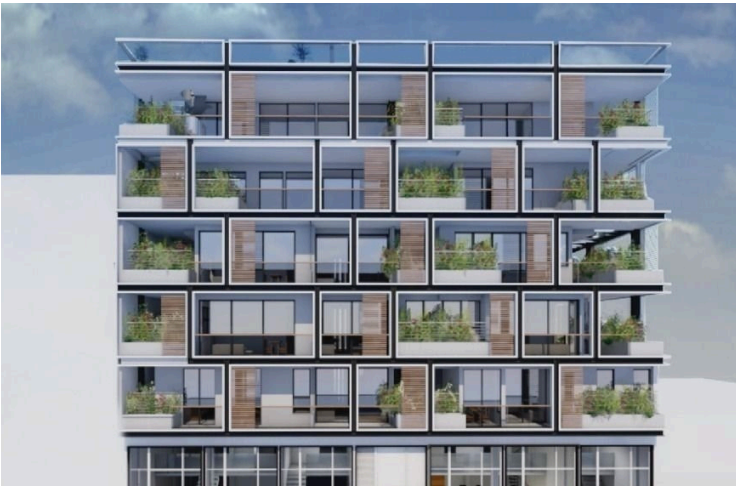
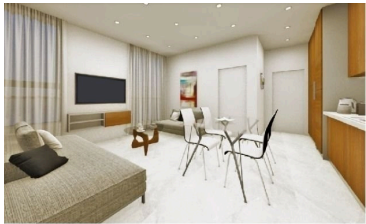
#15362

Four Bedroom Penthouse in Heart of City Center, Larnaca (15362)

📍 Center, Larnaca

€1,000,000 +VAT





Overview

Specifications

Bedrooms		Bathrooms		Covered	
 4		 6		 129 m ²	
Type	Apartment				
Toilets	6				
Covered veranda	35.9 m ²				
Roof garden	146 m ²				
Garden	27 m ²				
Status	Under construction				
Year of construction	2025				
Furnished	Unfurnished				
Structure	Concrete				
Facade	Concrete				
Communal charge frequency	Monthly				
Energy efficiency rating	 A				

Description

A rare opportunity to acquire a 4 bedroom penthouse apartment finishing March 26, in the vibrant Center area—ideal for investors, large families, professionals, or buyers seeking a combination of premium living and exceptional long-term value.

The penthouse offers an impressive 129 m² of covered internal living space, a spacious 35.9 m² covered veranda, and a private 146 m² roof garden, creating an extraordinary upscale living experience with unmatched city views.

Property Features

Bedrooms: 4

Bathrooms: 6 (4 in the apartment and 2 in the roof garden)

Elevator Access

Energy Efficiency: Class A

Year Built: 2026 (under construction)

Status: Unfurnished

Designed to the highest standards, these penthouses offer bright open-plan living areas, large glass openings, and



Architectural floor plan of a building with three apartments and a vacant unit. The plan shows detailed room layouts, dimensions, and furniture placement. Key features include:

- APT. 502 (2BEDROOM, 64.6 m²):** Located on the left, featuring a kitchen, living area, and two bedrooms. Dimensions include 3.000, 3.050, 3.255, 3.000, 3.000, 2.032, 1.800, 2.830, 3.720, 4.192, 1.100, 1.240, 1.00, 3.850, 5.750, 1.405, 2.255, 1.100, 100, 3.650, 266, 4.674, 3.350, 100, 10,950, 3.650, 100, 3.210, 39.
- APT. 501 (2BEDROOM, 29.50 m²):** Located in the middle, featuring a kitchen, living area, and two bedrooms. Dimensions include 600, 3.000, 100, 2.900, 600, 3.575, 4.950, 2.040, 100, 2.050, 1.688, 4.262, 2.555, 3.150.
- KENO:** Located on the right, featuring a kitchen, living area, and two bedrooms. Dimensions include 2.555, 3.150, 4.262, 1.688.

The plan also shows common areas, a staircase, and a parking area. Dimensions are provided in meters and millimeters. The plan is labeled with 'ΑΡΧΙΤΕΚΤΟΝΙΚΟ ΠΛΑΝΟ' and 'ΜΕΤΡΗΣΕΙΣ'.



Additional information

Facilities

Aircondition, Provision

Elevator

Heating, Provision

Features

Balcony

City view

Double glazing

Easy access to main roads

Fitted wardrobes

Granite countertops

Heart of city center

Investment opportunity

Near amenities

Near bus route

Open plan

Panoramic view

Rental potential

Roof garden

Sea view

Spacious rooms

Thermal insulation

Walking distance to beach

Distances

Amenities



50 m

Airport



5.4 km

Sea



400 m

Public transport



200 m

Schools




100 m

Contact us



George Sergiou

 (+357) 94055813

 info@lextrusrealestate.com

