



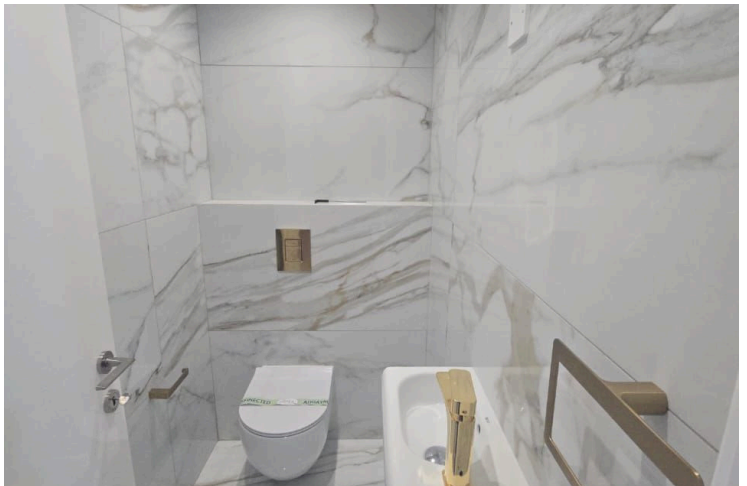
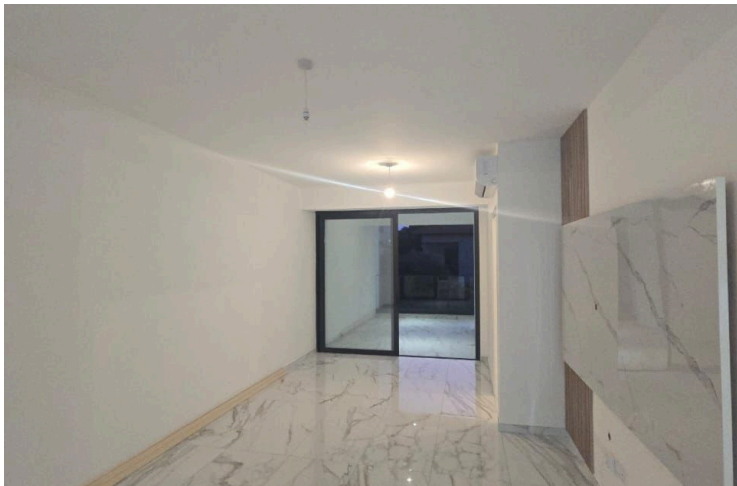
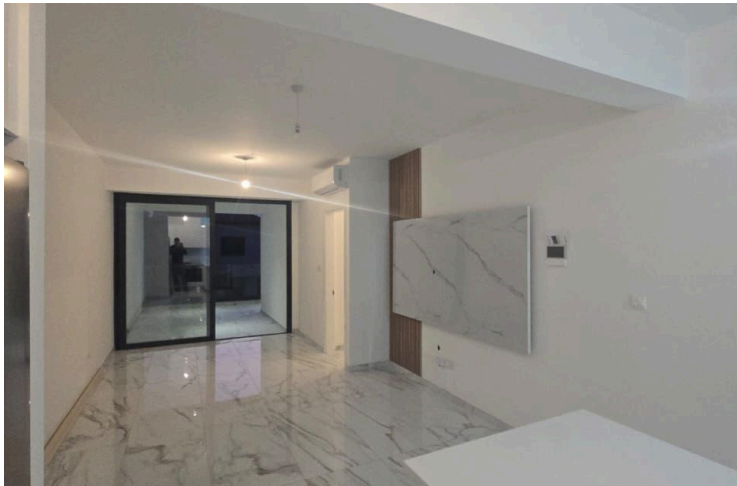
#15328

Modern Furnished Apartment in Lively Petrou Kai Pavlou

📍 Petrou Kai Pavlou, Limassol




€2,500 /month





Overview

Specifications

| | | | |
|---|-----------|---|---|
| Bedrooms | | Covered | |
|  2 | |  95 m ² | |
| Type | Apartment | Year of construction | 2025 |
| Showers | 1 | Furnished | Fully furnished |
| Toilets | 2 | Energy efficiency rating |  A |
| Status | Key ready | | |

Description

This modern, key ready apartment is available for rent in the sought-after area of Petrou Kai Pavlou. Offering a generous internal space of 95 square meters, this home provides a comfortable layout featuring two spacious bedrooms and one sleek bathroom. Situated on the first floor of a well-maintained three-storey building with an elevator, this apartment is easily accessible and practical for everyday living.

Built in 2025, the property boasts an energy efficiency rating of A, ensuring lower energy bills and a sustainable lifestyle. The apartment comes fully furnished with contemporary furniture and complete appliances, making it move-in ready from day one. Large windows in the living area offer bright city views, while the open-plan kitchen and dining space provide an inviting atmosphere for both relaxation and entertaining.

Petrou Kai Pavlou is known for its vibrant community and excellent access to local amenities, including supermarkets, cafes, schools, and parks. Its central location means you are never far from shopping, leisure, and public transportation.

This stylish rental is proudly presented by Lextrus Real Estate. Contact us today to schedule a viewing and secure your new home in one of the city's most desirable neighborhoods.



Additional information

Facilities

Aircondition, Split system

Elevator

Parking, Covered

Solar water heater

Storage

Features

Alarm system

Balcony, front

Bright

City view

Combined kitchen and dining area

Double glazing

Easy access to main roads

Elevated

En suite shower

Entrance hall

Fitted wardrobes

Guest WC

Kitchen appliances

Modern design

Municipal water/sewage

Near amenities

Quiet area

Shower

Tile flooring

Ventilation system

Distances

Amenities



500 m

Airport



66 km

Sea




3 km

Contact us



Elena Sokil

 (+357) 95759512

 lenasokil0@gmail.com

