



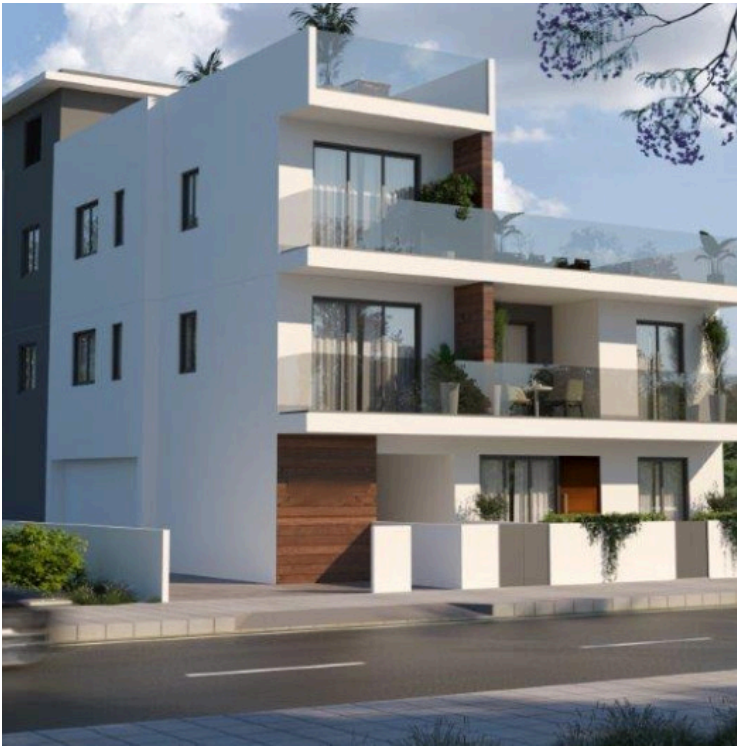
#15326

# MODERN 1 BEDROOM PENTHOUSE IN KITI, LARNACA (15326)

📍 Kiti, Larnaca





€155,000 +VAT





# Overview

## Specifications

Bedrooms		Bathrooms		Covered	
 1		 1		 48 m <sup>2</sup>	
Type		Apartment			
Toilets		1			
Covered veranda		5 m <sup>2</sup>			
Roof garden		25 m <sup>2</sup>			
Covered parking		12 m <sup>2</sup>			
Status		Off plan			
Year of construction		2027			
Furnished		Unfurnished			
Structure		Concrete			
Facade		Concrete			
Energy efficiency rating		 A			

## Description

For sale: a modern off-plan Second-floor apartment located in the highly sought-after area of Kiti. This residence offers contemporary design, practical layout, and excellent build quality within a peaceful yet well-connected community.

### Property Areas

Covered area: 48 m<sup>2</sup>

Covered veranda: 5 m<sup>2</sup>

Roof Garden: 25 m<sup>2</sup>

Covered parking: 12 m<sup>2</sup>

### Key Features

1 bedroom

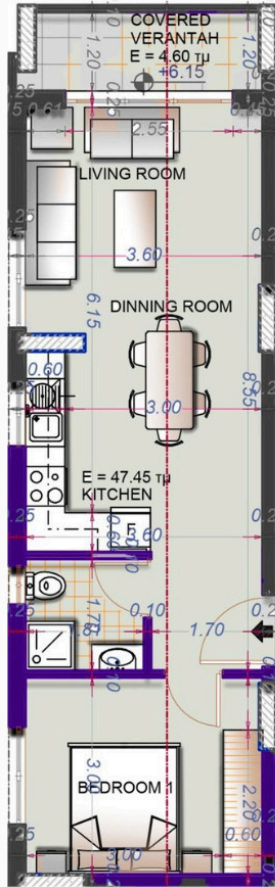
1 bathroom

Second-floor unit





## Floor plans



# Additional information

## Facilities

Aircondition, Provision

Parking, Covered

Elevator

Solar photovoltaic panels  
(provision)

Heating, Underfloor

Storage

## Features

Balcony

Double glazing

Electric car charger (provision)

Fitted wardrobes

Investment opportunity

Near amenities

Rental potential

Spacious rooms

Bath

Easy access to highway

En suite bathroom

Garden

Luxury specifications

Pressurized water system

Satellite TV

Thermal insulation

Bright

Easy access to main roads

Entrance gate

High ceilings

Modern design

Quiet area

Sound insulation

Veranda

## Distances

Amenities



1.3 km

Airport



8 km

Sea



3 km

Schools



1.5 km

Resort




3.8 km

## Contact us



**George Sergiou**

 (+357) 94055813

 [info@lextrusrealestate.com](mailto:info@lextrusrealestate.com)

