



#15325

MODERN 2 BEDROOM PENTHOUSE IN KITI, LARNACA (15325)

📍 Kiti, Larnaca





€275,000 +VAT





Overview

Specifications

Bedrooms		Bathrooms		Covered	
 2		 2		 75 m ²	
Type	Apartment				
Toilets	2				
Covered veranda	87 m ²				
Covered parking	12 m ²				
Status	Off plan				
Year of construction	2027				
Furnished	Unfurnished				
Structure	Concrete				
Facade	Concrete				
Energy efficiency rating	 A				

Description

For sale: a modern off-plan Second-floor apartment located in the highly sought-after area of Kiti. This residence offers contemporary design, practical layout, and excellent build quality within a peaceful yet well-connected community.

Property Areas

Covered area: 75 m²

Covered veranda: 87 m²

Covered parking: 12 m²

Key Features

2 bedrooms

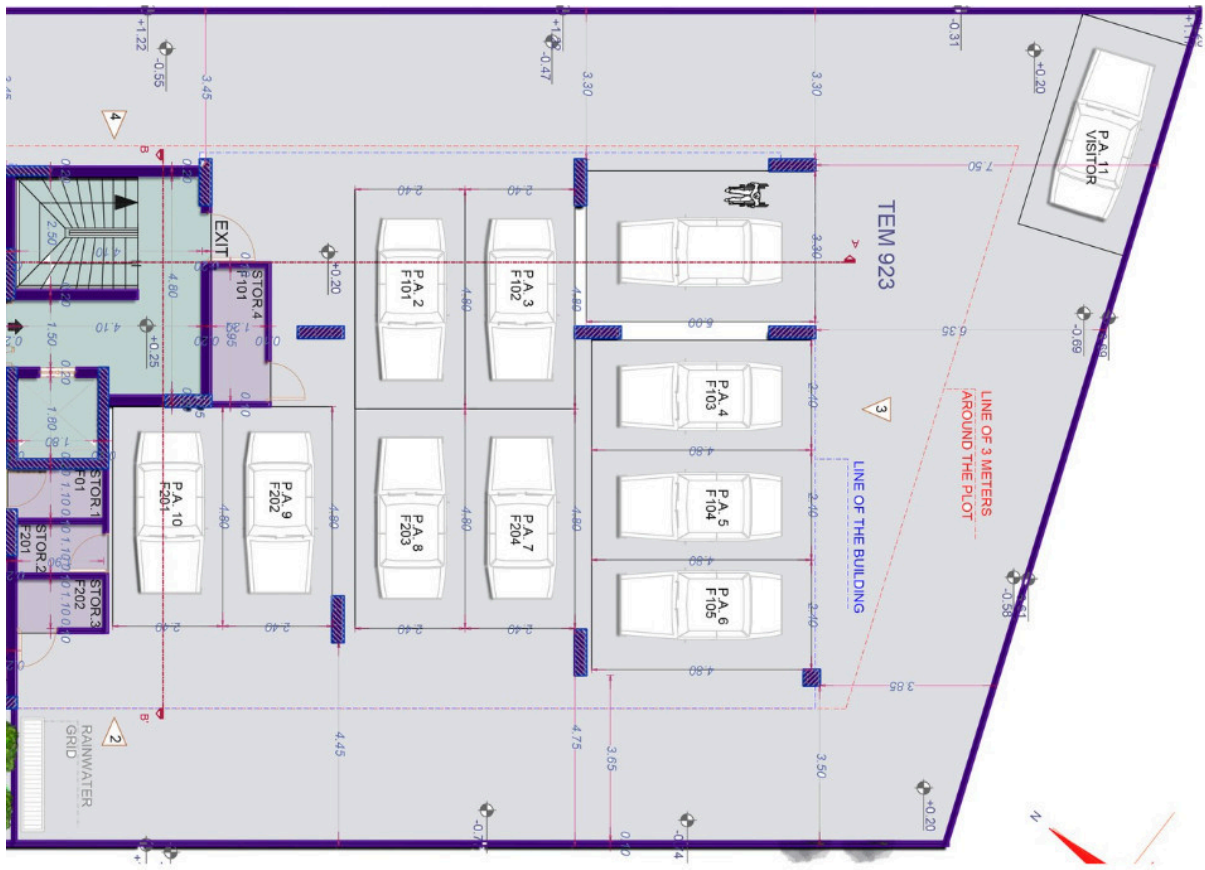
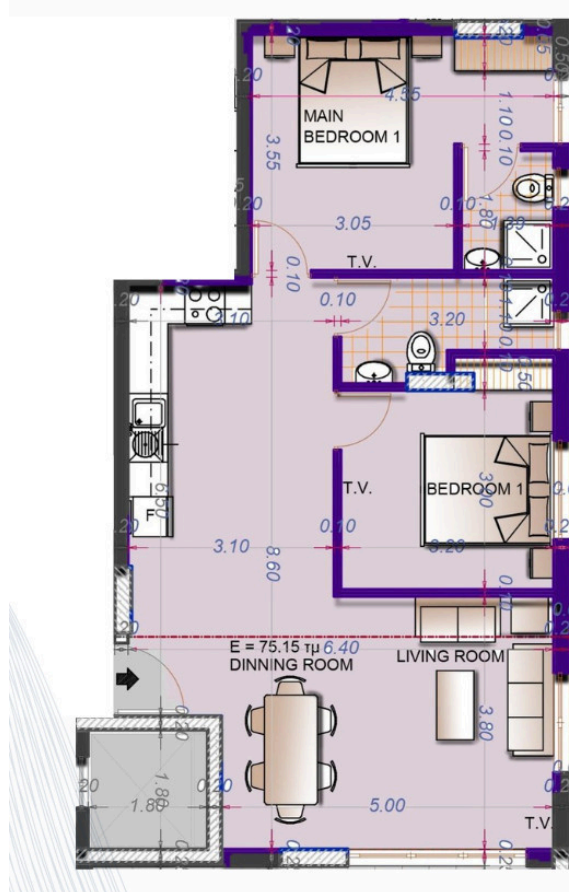
2 bathrooms

Second-floor unit

Unfurnished (ideal for custom interior design)



Floor plans



Additional information

Facilities

Aircondition, Provision

Parking, Covered

Elevator

Solar photovoltaic panels
(provision)

Heating, Underfloor

Storage

Features

Balcony

Double glazing

Electric car charger (provision)

Fitted wardrobes

Investment opportunity

Near amenities

Rental potential

Spacious rooms

Bath

Easy access to highway

En suite bathroom

Garden

Luxury specifications

Pressurized water system

Satellite TV

Thermal insulation

Bright

Easy access to main roads

Entrance gate

High ceilings

Modern design

Quiet area

Sound insulation

Veranda

Distances

Amenities



1.3 km

Airport



8 km

Sea



3 km

Schools



1.5 km

Resort




3.8 km

Contact us



George Sergiou

 (+357) 94055813

 info@lextrusrealestate.com

