



#15287

# LUXURY 2 BEDROOM PENTHOUSE IN GERMASOGEIA, LIMASSOL (15287)





📍 Germasogeia, Limassol

€680,000 +VAT



# Overview

## Specifications

Bedrooms		Bathrooms		Covered	
 2		 2		 113 m <sup>2</sup>	
Type	Apartment				
Toilets	2				
Covered veranda	29 m <sup>2</sup>				
Uncovered veranda	60 m <sup>2</sup>				
Status	Off plan				
Year of construction	2027				
Furnished	Unfurnished				
Structure	Concrete				
Facade	Concrete				
Energy efficiency rating	 A				

## Description

For sale is a modern three-bedroom apartment located in the prestigious and highly sought-after neighborhood of Germasogeia. This off-plan residence offers a spacious 113 m<sup>2</sup> of covered internal living space, complemented by a generous 29 m<sup>2</sup> covered veranda—perfect for outdoor dining, lounging, or simply enjoying the surrounding views. Positioned on the 3rd floor of an elegant three-story building with elevator access, the home features two contemporary bathrooms and a bright, open-plan layout designed for comfort and functionality.

### Property Features

Covered Area: 113 m<sup>2</sup>

Uncovered veranda: 60 m<sup>2</sup>

Covered Veranda: 29 m<sup>2</sup>

Bedrooms: 2

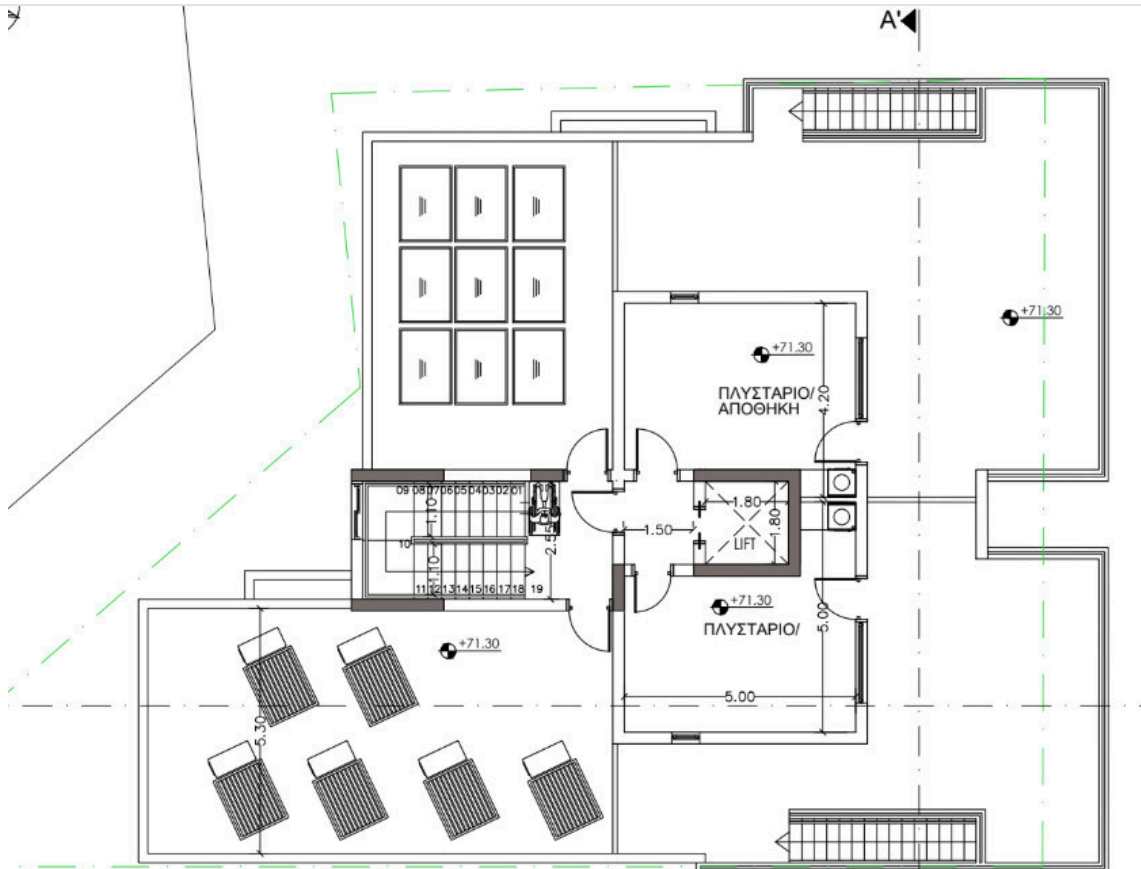
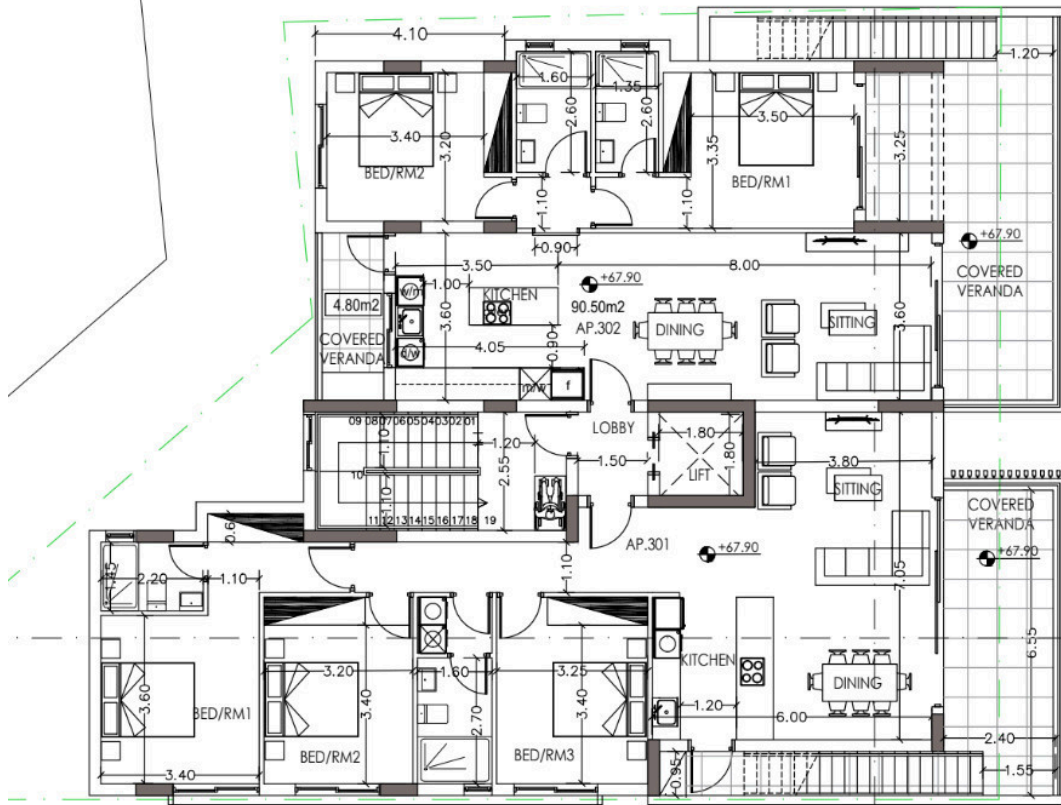
Bathrooms: 2

Floor: 3rd (with elevator)

Status: Off-plan



# Floor plans



# Additional information

## Facilities

Aircondition, Provision

Heating, Underfloor

Storage

Elevator

Parking, Covered

Gated complex

Solar photovoltaic panels (provision)

## Features

Balcony

CCTV (provision)

Easy access to main roads

Granite flooring

Luxury specifications

Pipe-in-pipe plumbing system

Rental potential

Spacious rooms

Bath

Double glazing

En suite bathroom

High ceilings

Modern design

Pressurized water system

Smart home automation

Thermal insulation

Bright

Easy access to highway

Entrance gate, automated

Investment opportunity

Near amenities

Quiet area

Sound insulation

Veranda

## Distances

Amenities



1 km

Airport



61 km

Sea



2.4 km

Schools



700 m

Resort




2 km

## Contact us



**George Sergiou**

 (+357) 94055813

 [info@lextrusrealestate.com](mailto:info@lextrusrealestate.com)

