

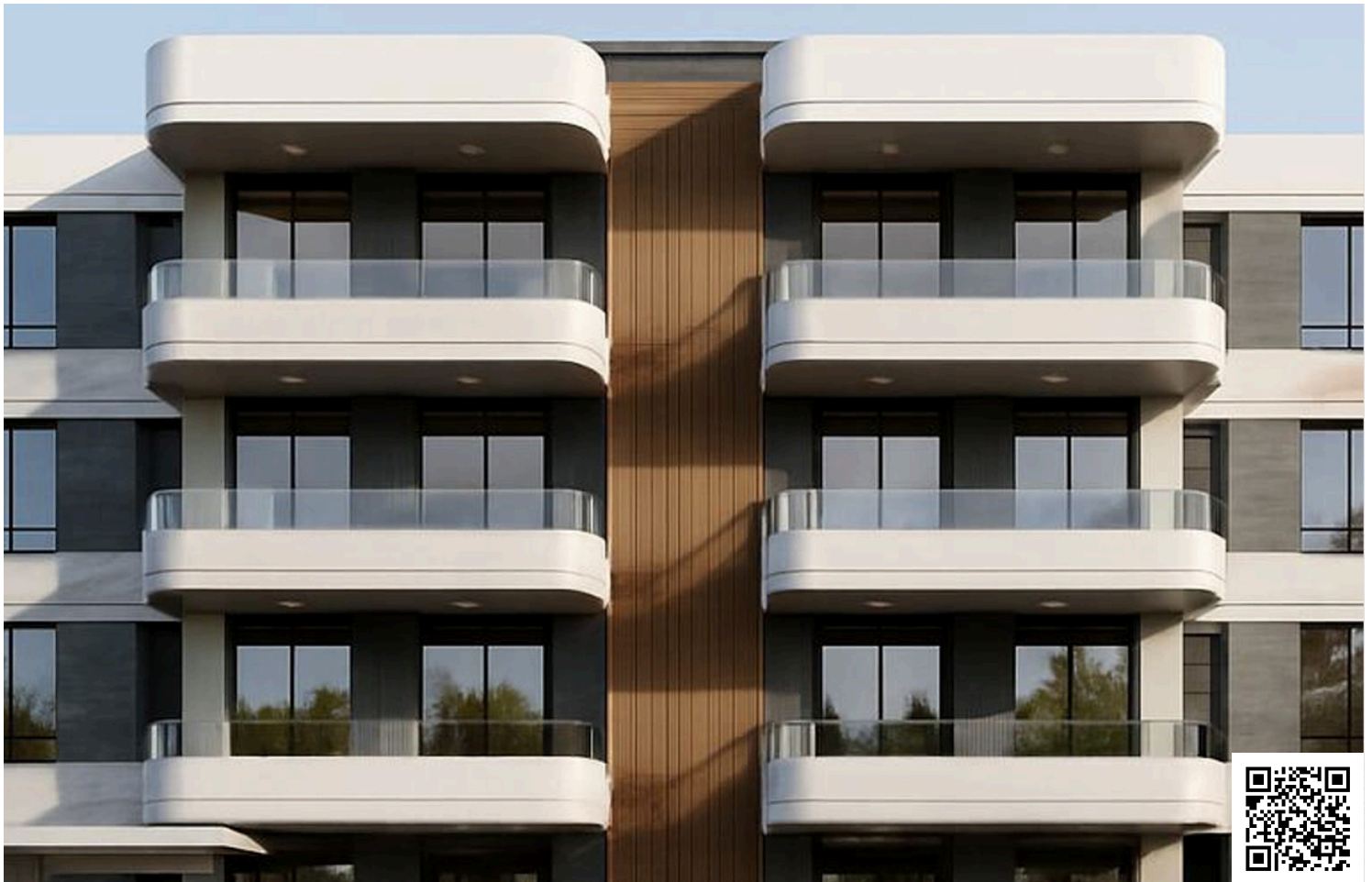


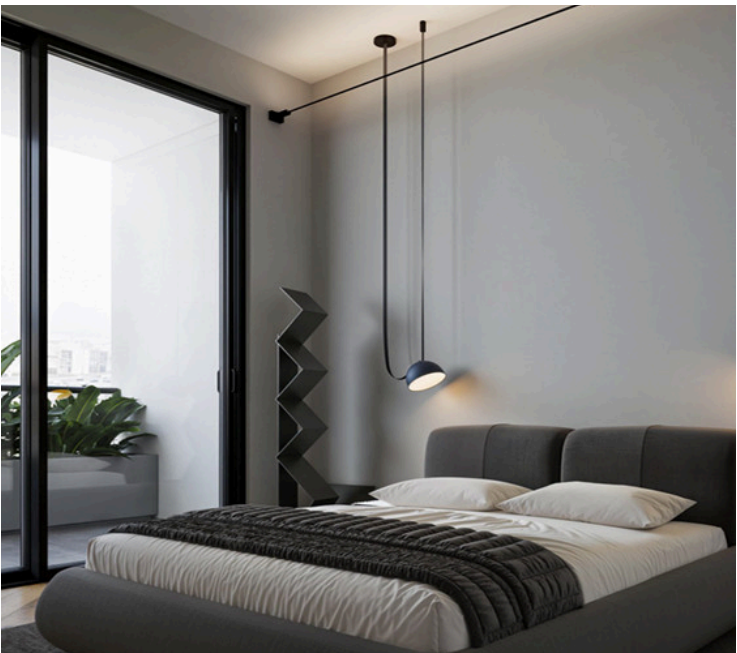
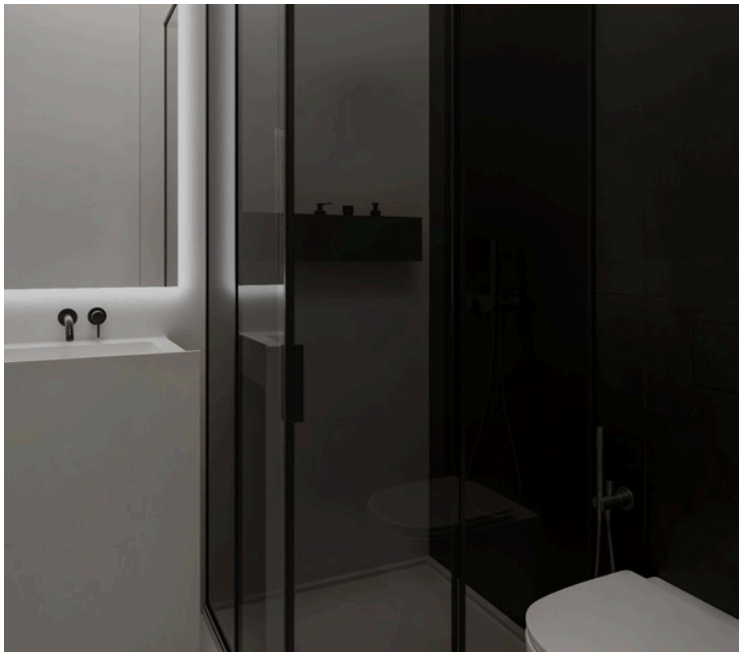
#15227

MODERN 3 BEDROOM APARTMENT WITH SEAVIEW (15227)

 Panthea, Limassol





€458,000 +VAT





Overview

Specifications

Bedrooms		Bathrooms		Covered	
 3		 1		 100 m ²	
Type	Apartment				
Toilets	2				
Covered veranda	20 m ²				
Status	Under construction				
Year of construction	2026				
Furnished	Unfurnished				
Structure	Concrete				
Facade	Concrete				
Energy efficiency rating	 A				

Description

For sale: A modern and spacious apartment currently under construction in the highly desirable neighborhood of Panthea. This beautifully designed residence offers 100 m² of covered internal space plus a generous 20 m² covered veranda, creating the perfect blend of indoor comfort and outdoor relaxation. Situated on the 3rd floor of a contemporary three-story building with elevator access, this home delivers both style and functionality.

Property Features

Covered Area: 100 m²

Covered Veranda: 20 m²

Bedrooms: 3

Bathrooms: 1

Floor: 3rd (with elevator)

Energy Efficiency: Class A

Underfloor Heating: Yes

Status: Under construction – delivery in 2026



Floor plans



Additional information

Facilities

Aircondition, Provision

Heating, Underfloor

Storage

Elevator

Parking, Covered

Gym

Pool, Communal

Features

Balcony

Double glazing

En suite bathroom

High ceilings

Modern design

Pressurized water system

Sea view

Thermal insulation

Bath

Easy access to highway

Entrance gate

Investment opportunity

Mountain view

Quiet area

Sound insulation

Veranda

Bright

Easy access to main roads

Guest WC

Luxury specifications

Near amenities

Rental potential

Spacious rooms

Distances

Amenities



1.5 km

Airport



61 km

Sea



5.8 km

Schools



2.9 km

Resort




1.6 km

Contact us



George Sergiou

 (+357) 94055813

 info@lextrusrealestate.com

