



#15172

Modern Three Bedroom Apartment in Vibrant Beachside Area

📍 Germasogeia Tourist Area, Limassol

€4,500 /month





Overview

Specifications

Bedrooms

 3


Bathrooms

 1

Covered

 113 m²

Type	Apartment
Showers	1
Toilets	3
Covered veranda	21 m ²

Status	Key ready
Year of construction	2020
Furnished	Fully furnished
Energy efficiency rating	 B

Description

Discover this modern, key-ready apartment available for rent in the vibrant Germasogeia Tourist Area. Boasting an internal space of 113 m², this spacious first-floor home offers three well-appointed bedrooms and one stylish bathroom. Enjoy the comfort of underfloor heating throughout, while large windows fill the apartment with natural light and offer panoramic views of both the city and the surrounding countryside.

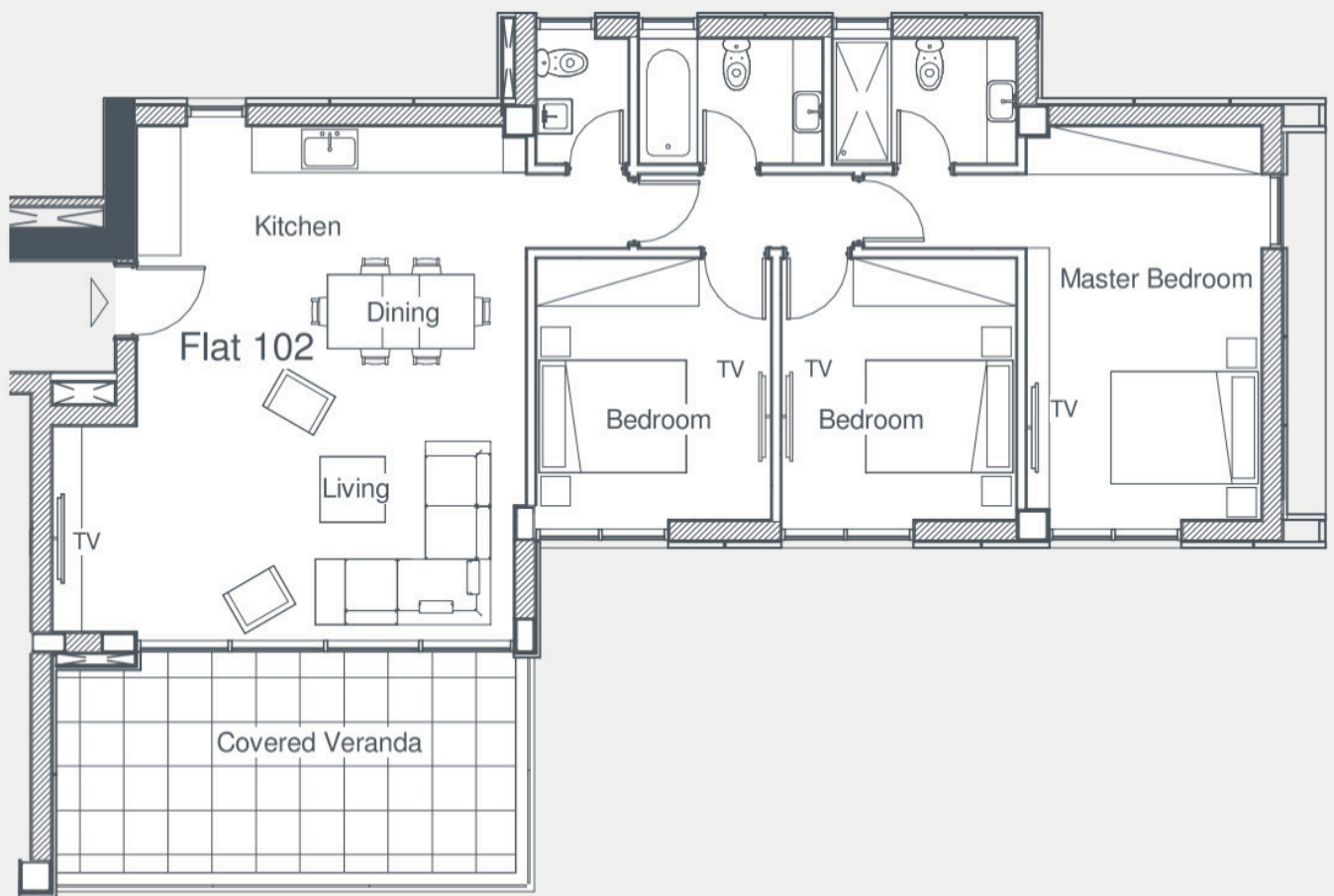
Built in 2020, this fully furnished apartment is designed for contemporary living. The open-plan layout creates a welcoming atmosphere, perfect for relaxing or entertaining. The property also includes a basement for extra storage. Situated in a secure, gated complex, residents benefit from exclusive facilities such as a communal swimming pool and a fully equipped gym. The building is serviced by an elevator, and security is prioritized for peace of mind.

Located in the heart of the Germasogeia Tourist Area, you will be close to a lively mix of shops, restaurants, and entertainment, as well as convenient access to the highway for easy commuting. This neighborhood is renowned for its beautiful surroundings, combining city energy with scenic country views.

This property is proudly offered for rent by Lextrus Real Estate. Contact us today to arrange a viewing.



Floor plans



Additional information





Facilities

Aircondition, Split system	Elevator	Gated complex
Gym	Heating, Underfloor	Outdoor shower
Parking, Underground	Pool, Communal	Sauna
Solar water heater	Storage	

Features

Alarm system	Balcony	Bath
Bathroom underfloor heating	Bright	Ceramic tiles
City view	Combined kitchen and dining area	Country view
Courtyard	Door screen	Double glazing
Easy access to highway	Easy access to main roads	Elevated
En suite shower	Entrance gate, automated	Entrance hall
Floor-to-ceiling windows	Guest WC	High ceilings
Kitchen appliances	Lobby	Modern design
Municipal water/sewage	Near amenities	Near bus route
Next to green area	Open plan	Panoramic view
Parquet flooring	Quiet area	Shower
Tile flooring	Ventilation system	Walking distance to beach

Distances

Amenities  50 m	Airport  60 km	Sea  150 m
Public transport  100 m		



Contact us



Elena Sokil

☎ (+357) 95759512

✉ lenasokil0@gmail.com

