

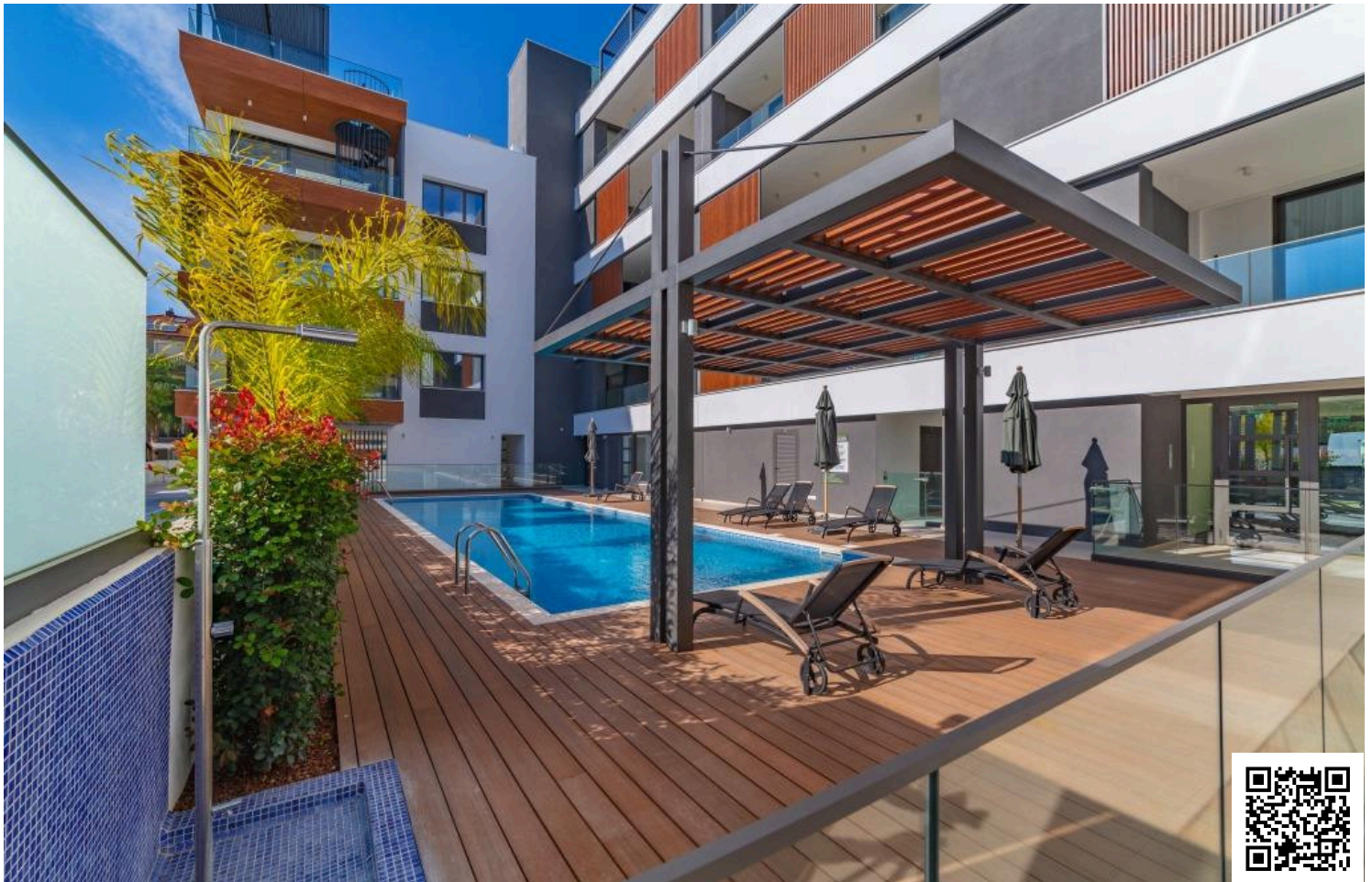


#15153

3 Bedroom Penthouse in Germasogeia Tourist Area with Pool

📍 Germasogeia Tourist Area, Limassol

€5,500 /month





Overview

Specifications

Bedrooms



3

Bathrooms



1

Covered

149.1 m²

Type	Apartment
Showers	2
Toilets	3
Covered veranda	22 m ²

Status	Key ready
Year of construction	2018
Furnished	Fully furnished
Energy efficiency rating	A

Description

Available for rent is this stunning penthouse apartment in the highly sought-after Germasogeia Tourist Area. With a spacious internal area of 149.1 m², this modern home offers ample comfort and privacy. The apartment features three bedrooms and one well-appointed bathroom, making it ideal for families or professionals seeking extra space.

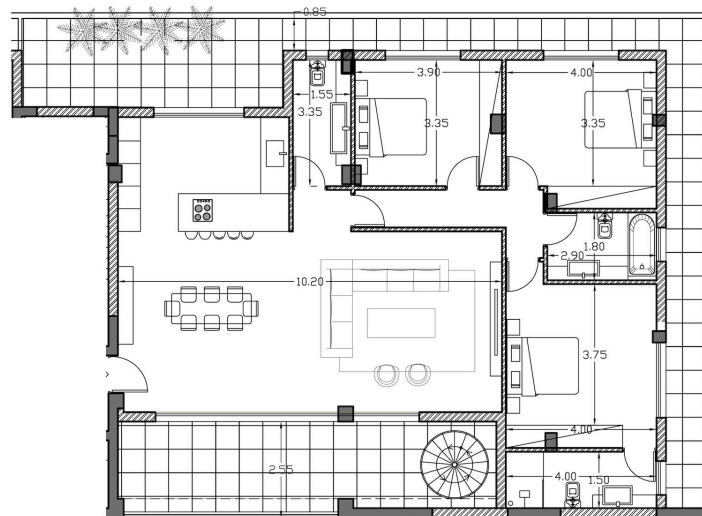
Step inside and enjoy the benefits of a key-ready, fully furnished property with stylish finishes throughout, constructed in 2018 and designed to meet energy efficiency A standards. Enjoy the luxury of underfloor heating, a private Jacuzzi, and breathtaking city, panoramic, and sea views from the comfort of your own home. The building is serviced by an elevator for your convenience.

Located in a secure, gated complex, residents have exclusive access to a communal swimming pool and landscaped grounds. The Germasogeia Tourist Area is known for its vibrant atmosphere, with a wide range of shops, cafes, and restaurants nearby. Its proximity to the highway offers easy access to the city center or surrounding areas while keeping all your daily needs within easy reach.

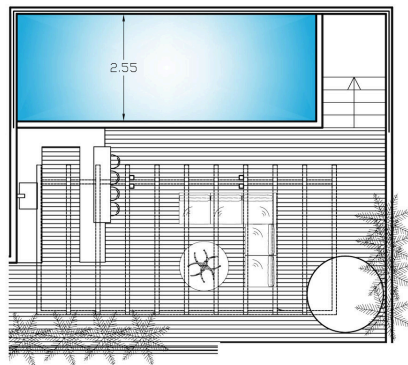
This exceptional penthouse is advertised by Lextrus Real Estate. Contact us to arrange a viewing and secure your new home in one of the most desirable and convenient locations.



Floor plans



FLOOR 4



ROOF TOP



Additional information

Facilities

Aircondition, Split system	Elevator	Gated complex
Gym	Heating, Underfloor	Indoor pool, Private
Outdoor shower	Parking, Covered	Pergola
Pool, Communal	Sauna	Solar photovoltaic panels
Solar water heater		

Features

Balcony	Barbeque	Bath
Bathroom underfloor heating	Bright	City view
Combined kitchen and dining area	Country view	Courtyard
Double glazing	Easy access to highway	Easy access to main roads
Elevated	En suite bathroom	En suite shower
Entrance gate, automated	Entrance hall	Floor-to-ceiling windows
Guest WC	High ceilings	Internal stairs
Jacuzzi	Kitchen appliances	Kitchen island
Luxury specifications	Marble flooring	Modern design
Municipal water/sewage	Near amenities	Near bus route
Next to green area	Open plan	Outdoor kitchen
Panoramic view	Parquet flooring	Pool view
Quiet area	Roof garden	Sea view
Separate dining area	Shower	Spacious rooms
Spiral staircase	Tile flooring	Ventilation system
Veranda	Veranda, large	Walking distance to beach



Distances

Amenities

 100 m

Airport

 60 km

Sea

 150 m

Public transport

 100 m

Contact us



Elena Sokil

 (+357) 95759512

 lenasokil0@gmail.com

