



#15151

# Seaview Penthouse Apartment in Vibrant Germasogeia Area

📍 Germasogeia Tourist Area, Limassol

€6,500 /month





# Overview

## Specifications

Bedrooms




Bathrooms



Covered



Type	<b>Apartment</b>
Showers	<b>2</b>
Toilets	<b>4</b>
Covered veranda	<b>18 m<sup>2</sup></b>
Uncovered veranda	<b>2.4 m<sup>2</sup></b>

Status	<b>Key ready</b>
Year of construction	<b>2018</b>
Furnished	<b>Fully furnished</b>
Energy efficiency rating	 <b>A</b>

## Description

Available for rent is a spacious penthouse apartment in the desirable Germasogeia Tourist Area. This key-ready home offers 184 m<sup>2</sup> of internal space, featuring three comfortable bedrooms and one modern bathroom. Located in a secure, gated complex with elevator access, the apartment sits on the top floor and provides breathtaking panoramic views of the city and the sea.

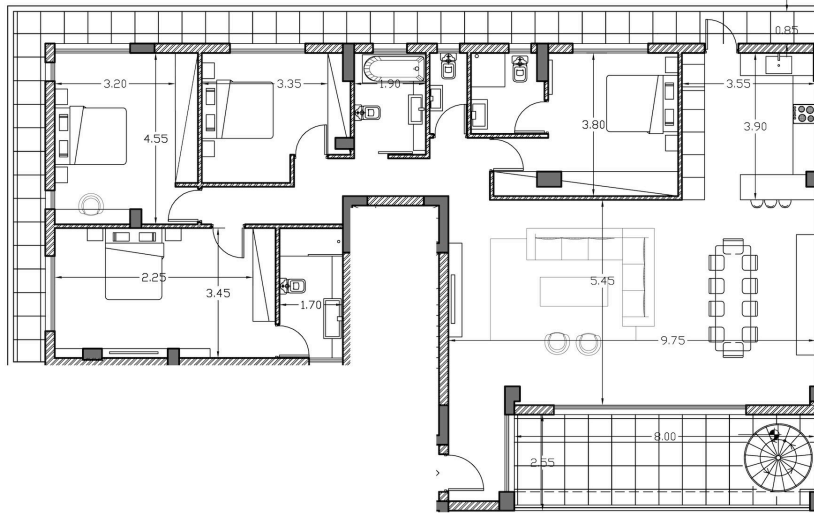
Fully furnished and built in 2018, the property is designed for comfort and efficiency, boasting an Energy Efficiency rating of A and underfloor heating throughout. Residents can enjoy exclusive access to a communal swimming pool and a private Jacuzzi, adding to the relaxed, luxury lifestyle on offer.

The Germasogeia Tourist Area is known for its vibrant atmosphere, with a wide range of restaurants, cafes, shops, and entertainment options within easy reach. Its proximity to the highway makes commuting simple and convenient, while the city's attractions and the beautiful coastline are just moments away.

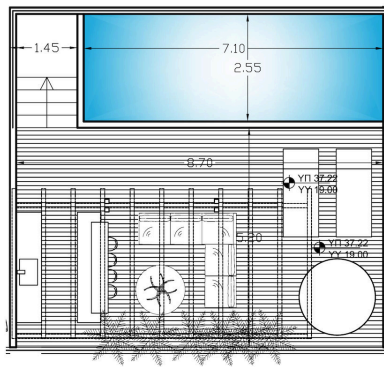
This apartment is ideal for those who value comfort, convenience, and spectacular views. For more information or to arrange a viewing, please contact Lextrus Real Estate.



# Floor plans



FLOOR 4



ROOF TOP



# Additional information

## Facilities

Aircondition, Split system

Heating, Underfloor

Parking, Uncovered

Sauna

Elevator

Indoor pool, Private

Pergola

Solar photovoltaic panels

Gated complex

Outdoor shower

Pool, Communal

Solar water heater

## Features

Balcony

Bathroom underfloor heating

Courtyard

Easy access to main roads

En suite shower

Fire detector

High ceilings

Kitchen appliances

Modern design

Near bus route

Outdoor kitchen

Pool view

Separate dining area

Spiral staircase

Veranda

Barbeque

Bright

Double glazing

Elevated

Entrance gate, automated

Floor-to-ceiling windows

Internal stairs

Luxury specifications

Municipal water/sewage

Next to green area

Panoramic view

Quiet area

Shower

Tile flooring

Veranda, large

Bath

City view

Easy access to highway

En suite bathroom

Entrance hall

Guest WC

Jacuzzi

Marble flooring

Near amenities

Open plan

Parquet flooring

Sea view

Spacious rooms

Ventilation system

Walking distance to beach



## Distances

Amenities

 100 m

Airport

 60 km

Sea

 150 m


Public transport

 100 m

## Contact us



**Elena Sokil**

 (+357) 95759512

 lenasokil0@gmail.com

