



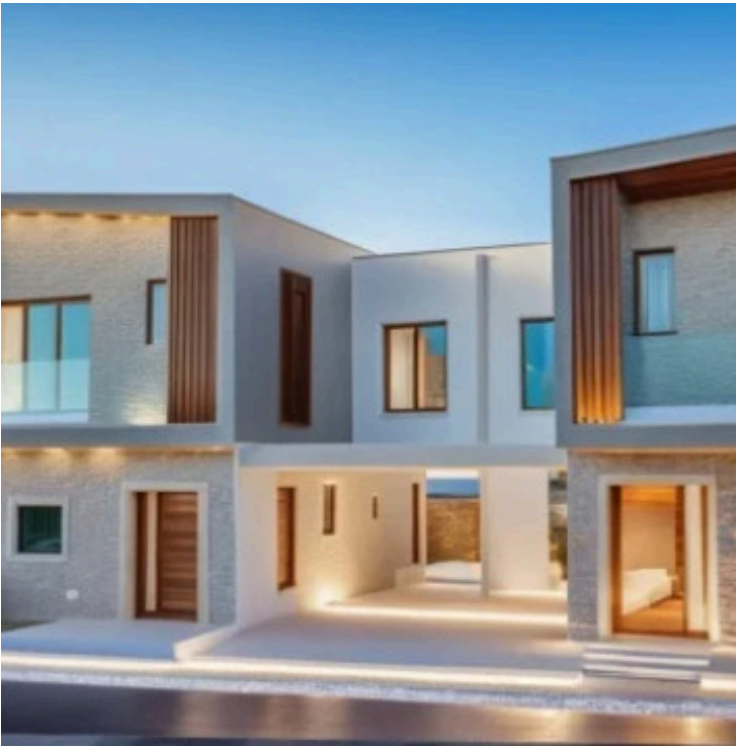
#14744

Modern Maisonette for Sale in Timi, Paphos (14744)

📍 Timi, Paphos

€341,250 +VAT







Overview

Specifications


Bedrooms

 3

Bathrooms

 2

Covered

 149.5 m²

Type

Maisonette

Toilets

3

Plot

119.2 m²

Status

Off plan


Furnished

Unfurnished

Structure

Concrete

Energy efficiency rating

 A

Description

Contemporary Living in Maisonette with Sea View in Timi, Paphos

Overview

A Complex of 17 maisonettes with a Covered area of 2522 m2 an Land area; 3307 m sets a new benchmark for modern living in the beautiful region of Timi, Paphos. This exclusive development showcases a collection of elegantly designed two-story homes that combine modern architecture with luxurious finishes, all against the stunning backdrop of one of Cyprus’s most desirable coastal areas.

Property Details

Type: Off-plan Maisonette

Total Internal Area: 149.5 m²

Plot Size: 119.2 m²

Bedrooms: 3

Bathrooms: 2

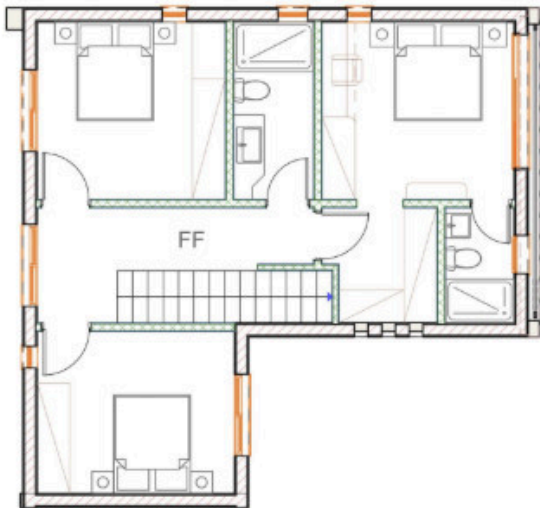
Energy Efficiency: A-rated



Floor plans



Type A: 1-7, 9-13



Additional information

Facilities

Aircondition, Split system

Heating, Split system

Parking, Covered

Features

Double glazing

Guest WC

Modern design

Mountain view

Panoramic view

Sea view

Distances

Amenities

 500 m

Airport

 18 km

Sea

 1.5 km


Schools

 500 m

Contact us



Christos Ioannides

 (+357) 95146944

 valantodc@gmail.com

