



#14742

# Modern Maisonette for Sale in Timi, Paphos (14742)

📍 Timi, Paphos





€341,250 +VAT





# Overview

## Specifications

Bedrooms		Bathrooms		Covered	
 3		 2		 149.5 m <sup>2</sup>	
Type		Maisonette			
Toilets		3			
Plot		123.6 m <sup>2</sup>			
Status		Off plan			
Furnished		Unfurnished			
Structure		Concrete			
Energy efficiency rating		 A			

## Description

Contemporary Living in Maisonette with Sea View in Timi, Paphos

### Overview

A Complex of 17 maisonettes with a Covered area of 2522 m2 an Land area; 3307 m sets a new benchmark for modern living in the beautiful region of Timi, Paphos. This exclusive development showcases a collection of elegantly designed two-story homes that combine modern architecture with luxurious finishes, all against the stunning backdrop of one of Cyprus’s most desirable coastal areas.

### Property Details

Type: Off-plan Maisonette

Total Internal Area: 149.5 m<sup>2</sup>

Plot Size: 123 m<sup>2</sup>

Bedrooms: 3

Bathrooms: 2

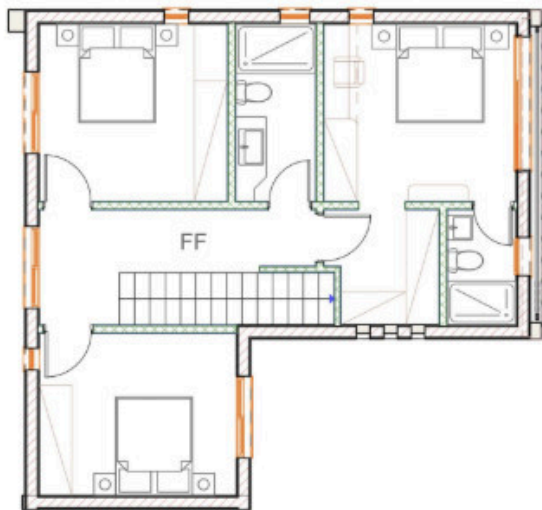
Energy Efficiency: A-rated



# Floor plans



Type A: 1-7, 9-13



# Additional information

## Facilities

Aircondition, Split system

Heating, Split system

Parking, Covered

## Features

Double glazing

Guest WC

Modern design

Mountain view

Panoramic view

Sea view

## Distances

Amenities

 500 m

Airport

 18 km

Sea

 1.5 km


Schools

 500 m

## Contact us



**Christos Ioannides**

 (+357) 95146944

 valantodc@gmail.com

