



#14739

# Maisonette for Sale with Pool in Quiet Timi (14739)

📍 Timi, Paphos

€448,000 +VAT





# Overview

## Specifications

Bedrooms

 3


Bathrooms

 2

Covered

 142 m<sup>2</sup>

Type	<b>Maisonette</b>
Toilets	<b>3</b>
Plot	<b>2230 m<sup>2</sup></b>
Covered veranda	<b>26 m<sup>2</sup></b>
Uncovered veranda	<b>8 m<sup>2</sup></b>

Status	<b>Off plan</b>
Furnished	<b>Unfurnished</b>
Structure	<b>Concrete</b>
Energy efficiency rating	 <b>A</b>

## Description

For Sale: Modern Off-Plan Maisonette in Peaceful Timi Village

Discover the perfect combination of modern living and village charm with this elegant off-plan maisonette located in the tranquil village of Timi in a plot of 2230 m<sup>2</sup> with two modern maisonettes. Designed with both style and comfort in mind, this home offers 142 m<sup>2</sup> of internal space, ideal for families or those seeking a serene lifestyle close to all amenities.

Separate title deed for each property.

### Property Features

3 Bedrooms and 2 contemporary Bathrooms and guest wc

Open-plan living and dining area filled with natural light

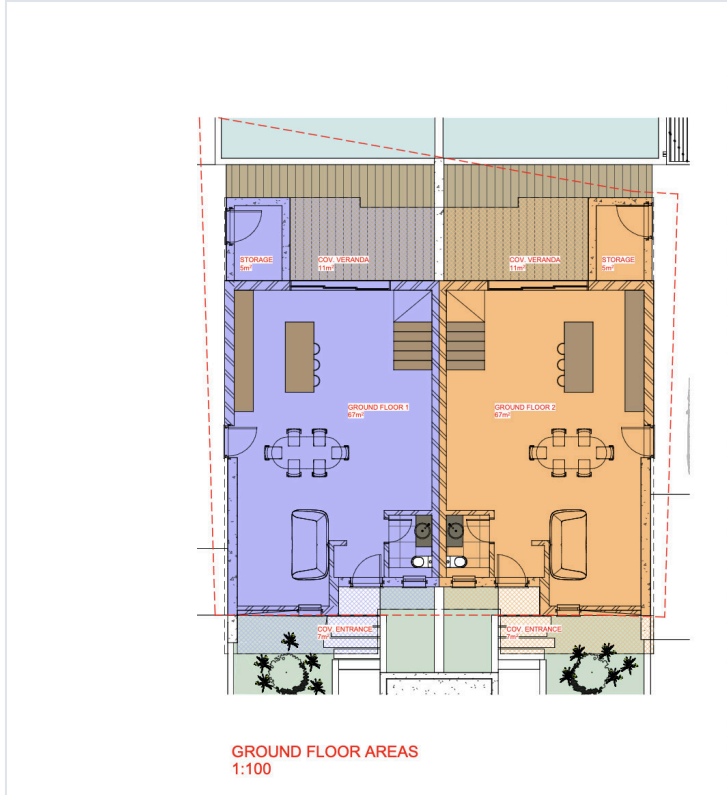
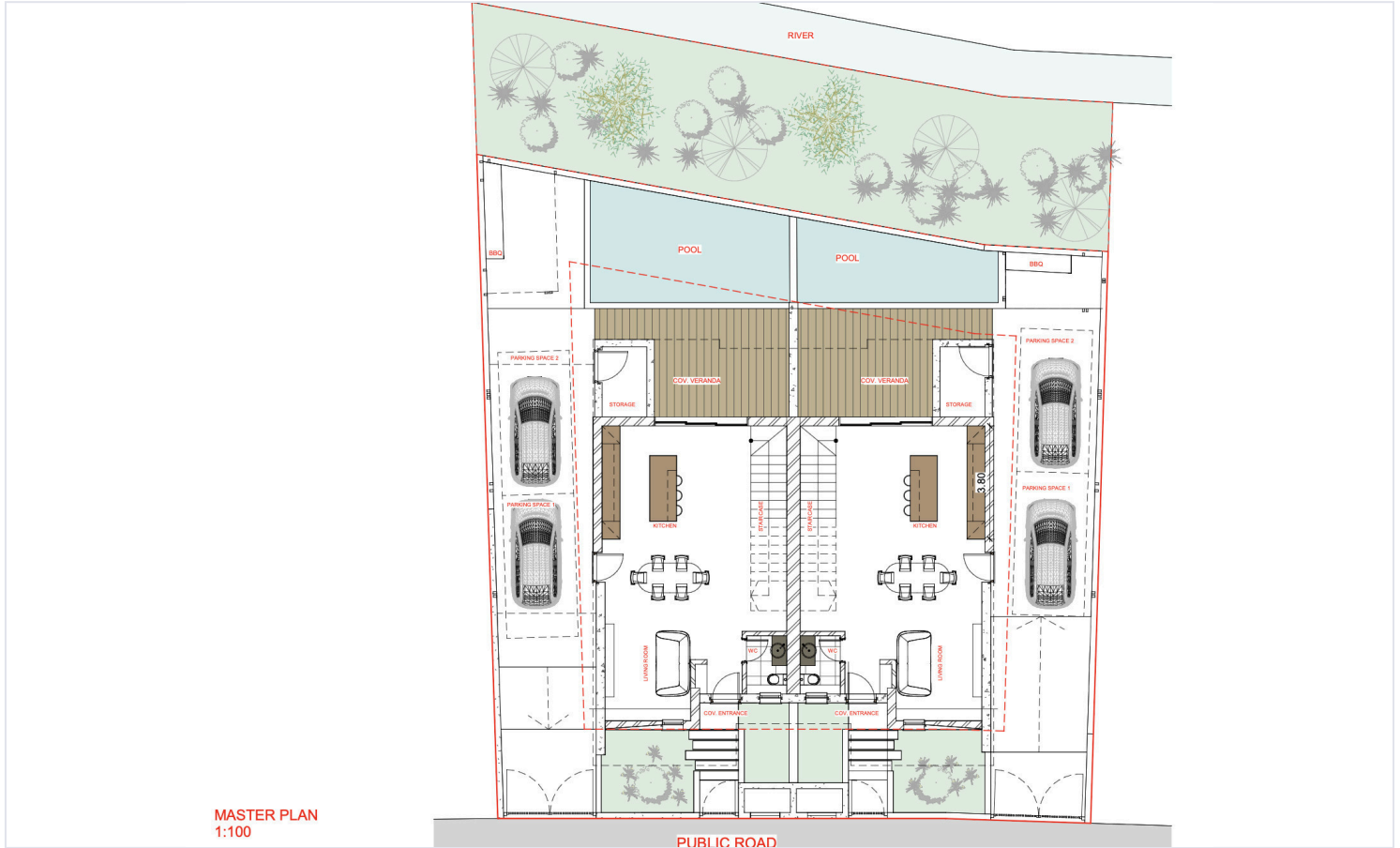
Energy Efficiency Rating: A – sustainable and cost-effective

Private swimming pool for relaxation and entertaining

Covered parking and ample storage space

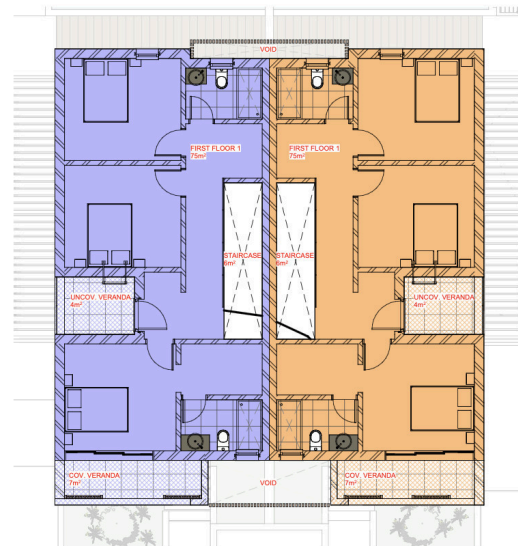


# Floor plans



**HOUSE 1**  
GF AREA: 67m<sup>2</sup>  
STORAGE: 5m<sup>2</sup>  
COV. VER.: 11m<sup>2</sup>  
COV. ENTRANCE: 7m<sup>2</sup>

**HOUSE 2**  
GF AREA: 67m<sup>2</sup>  
STORAGE: 5m<sup>2</sup>  
COV. VER.: 11m<sup>2</sup>  
COV. ENTRANCE: 7m<sup>2</sup>



**HOUSE 1**  
1ST FLOOR AREA: 75m<sup>2</sup>  
STAIRCASE: 6m<sup>2</sup>  
UNCOVERED VERANDA: 4m<sup>2</sup>  
COVERED VER.: 7m<sup>2</sup>

**HOUSE 2**  
1ST FLOOR AREA: 75m<sup>2</sup>  
STAIRCASE: 6m<sup>2</sup>  
UNCOVERED VERANDA: 4m<sup>2</sup>  
COVERED VER.: 7m<sup>2</sup>



# Additional information

## Facilities

Aircondition, Split system

Heating, Split system

Parking, Covered

Pool, Private

Storage

## Features

Double glazing

Garden

Guest WC

Modern design

Open plan

Panoramic view

Roof garden

Sea view

Veranda

Village view

## Distances

Amenities

 350 m

Airport

 2 km

Sea

 1.5 km


Schools

 500 m

## Contact us



**Christos Ioannides**

 (+357) 95146944

 valantodc@gmail.com

