



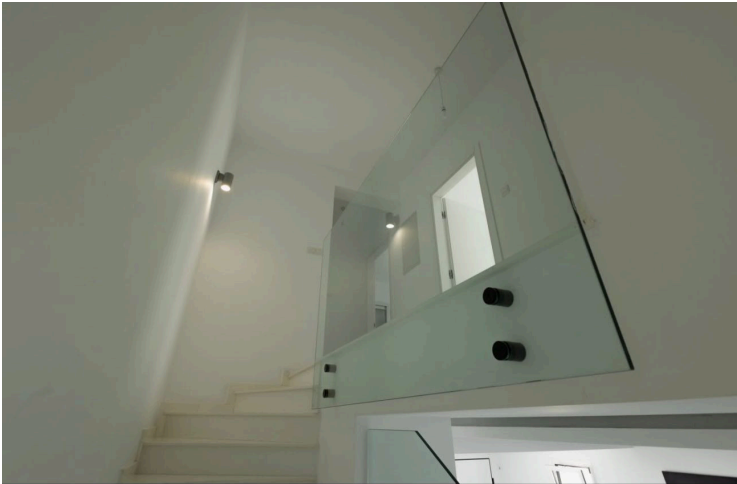
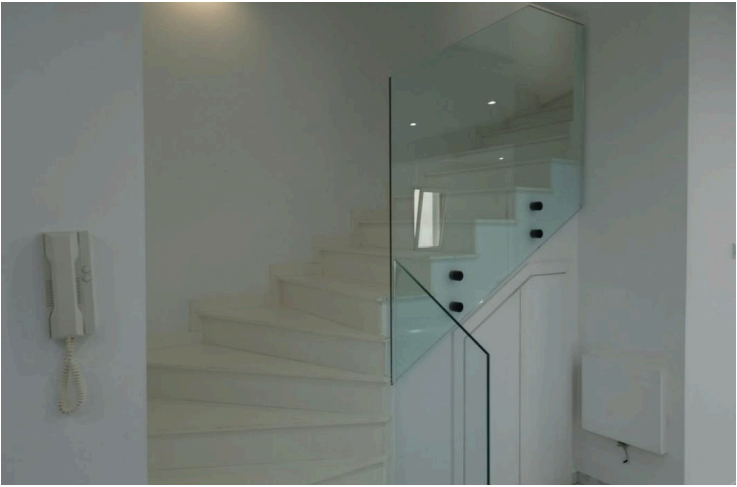
#14735

# Modern 3 Bedroom Semi-Detached Home in Quiet Agia Fyla Neighborhood

📍 Agia Fyla, Limassol

€3,700 /month





# Overview

## Specifications

Bedrooms		Bathrooms		Covered	
 3		 2		 161 m <sup>2</sup>	
Type	Semi-Detached House				
Toilets	2				
Plot	214 m <sup>2</sup>				
Garden	32.6 m <sup>2</sup>				
Year of construction		2020			
Furnished		Partially furnished			
Energy efficiency rating		 A			

## Description

This modern semi-detached house is available to rent in the sought-after area of Agia Fyla. With 161 m2 of internal space, the property offers a spacious and comfortable living environment. The house features three well-sized bedrooms and two bathrooms, making it ideal for families or professionals seeking extra space.

Built in 2020, the home benefits from excellent energy efficiency (Class A), ensuring low utility costs and a comfortable climate throughout the year. The house comes partially furnished, providing flexibility to add your personal touch. Residents enjoy sweeping city, mountain, and country views, as well as a full panoramic outlook from the property.

Located within a secure gated complex, this home offers peace of mind and privacy. Agia Fyla is a vibrant and established neighborhood, known for its convenient access to daily amenities, reputable schools, and excellent transport links. The property is situated close to the highway, making commutes quick and easy.

Enjoy a perfect blend of modern living and scenic surroundings in t





# Floor plans

ΓΙΑ ΠΑΡΑΓΓΕΛΙΑ inc. 15%  
φθορά και τσεκολαδόυρα.  
Εξωτερικά πατώματα 100.00 τ.μ.

Πάτωμα guest w.c 2.50τ.μ.  
Τοίχος guest w.c 13.00τ.μ.

Εσωτερικό πάτωμα 72.70 τ.μ.

Κήπος πρόσοψης 6.50τ.μ.

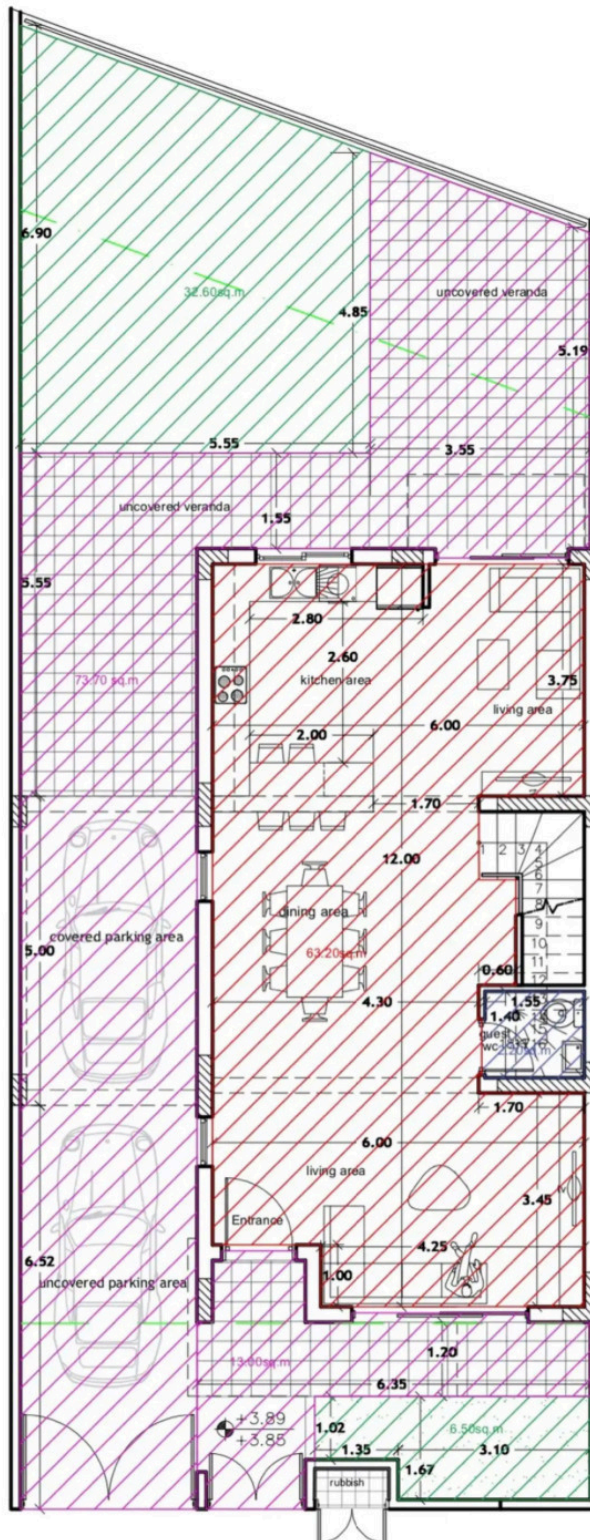
Κήπος - αυλή 32.60τ.μ.

Περίφραξη απο  
αλουμίνιο και γυαλί 9μ.

Πάγκος κουζίνας 5.65 τ.μ.

Τοίχος κουζίνας 5.65 τ.μ.

island bar 2.00 x 0.80 x0.75 Ύψος.



# Additional information

## Facilities

Aircondition, Split system

Parking, Covered

Storage

Childrens playground

Solar photovoltaic panels

Gated complex

Solar water heater

## Features

Balcony

City view

Double glazing

En suite bathroom

Entrance hall

Guest WC

Mountain view

Next to green area

Quiet area

Shutters, electric

Utility room

Bath

Country view

Easy access to highway

En suite shower

Fitted wardrobes

Guestroom

Municipal water/sewage

Open plan

Separate dining area

Spacious rooms

Veranda

Bright

Door screen

Easy access to main roads

Entrance gate, automated

Garden

Kitchen appliances

Near amenities

Panoramic view

Shower

Tile flooring

## Distances

Amenities

 500 m

Airport

 62 km

Sea

 4 km

Public transport

 1 km


Schools

 1 km

## Contact us



**Elena Sokil**

 (+357) 95759512

 lenasokil0@gmail.com

