



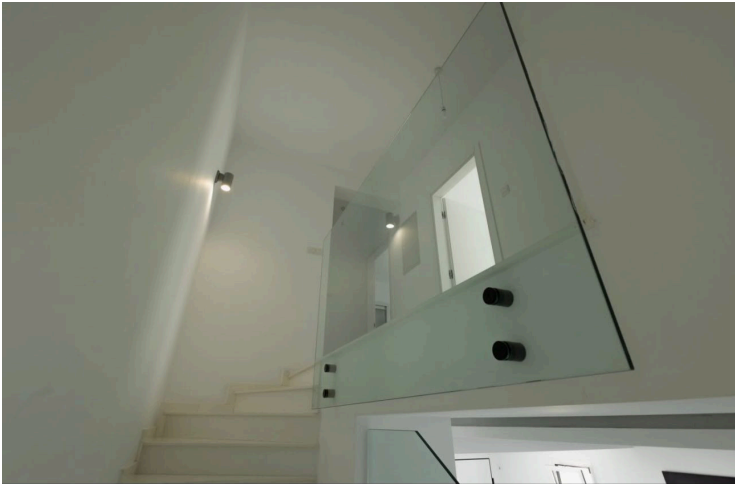
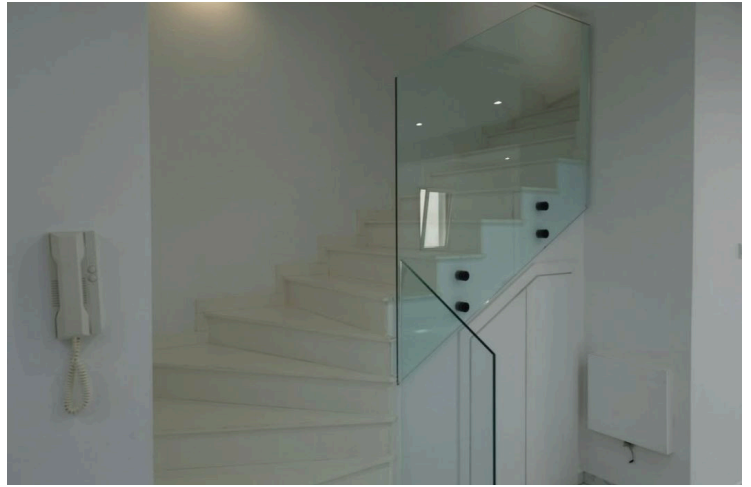
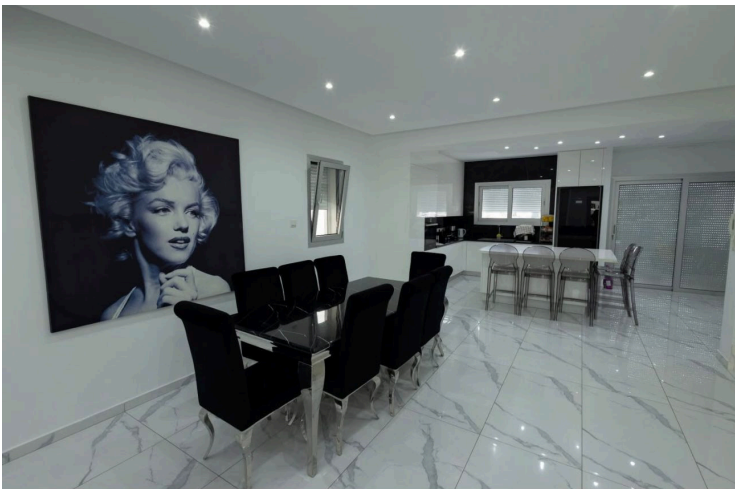
#14734

Modern 3 Bedroom Semi Detached Home in Peaceful Agia Fyla

📍 Agia Fyla, Limassol

€670,000





Overview

Specifications

Bedrooms

 3


Bathrooms

 2

Covered

 161 m²

Type	Semi-Detached House
Toilets	2
Plot	214 m²
Garden	32.6 m²
Status	Resale

Year of construction	2020
Title deed	Yes
Furnished	Partially furnished
Energy efficiency rating	 A

Description

For sale is a stylish semi-detached house located in the sought-after area of Agia Fyla. This modern resale home was built in 2020 and offers a spacious internal area of 161 m². It features three comfortable bedrooms and two well-appointed bathrooms, making it ideal for families or those seeking extra space. The property is partially furnished, allowing you to add your personal touch.

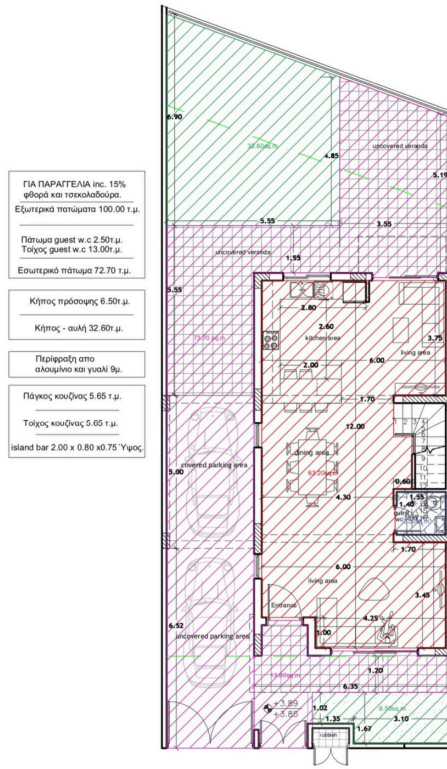
Agia Fyla is a popular residential district known for its peaceful environment and convenient access to daily life. The area offers quick connections to the highway, making commuting easy, while schools, shops, and other amenities are just a short drive away. It is a perfect location for those who enjoy city convenience combined with a relaxed atmosphere.

The house is part of a secure, gated complex. Energy efficiency rating A ensures low energy consumption and a comfortable living environment year-round. One of the standout features is the breathtaking panoramic view that stretches across the city, toward the mountains and countryside.

This property is exclusively advertised by Lextrus Real Estate. Don't miss the opportunity to own a modern, well-located home in one of the most desirable parts of Agia Fyla. Contact us today for more information or to arrange a viewing.



Floor plans



5:21



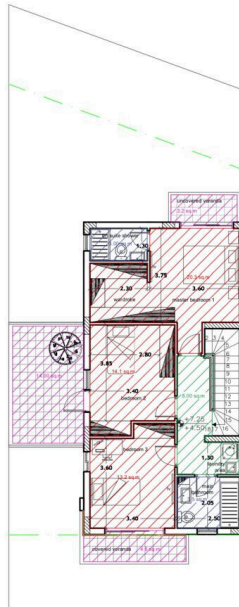
Τέλος No4 κάτοψη οΟΟ†ΞΩ...pdf



ΓΙΑ ΠΑΡΑΤΕΛΙΑ inc. 15% φθώρα και ποικιλολόγους
 Πάτωμα επί αυλή 3.50τ.μ.
 Τοίχος επί αυλή 18.50τ.μ.
 Ύψος κεραιώτου μέχρι 2.40, από το 2.30.
 Πάτωμα main bath 4.00τ.μ.
 Τοίχος main bath 24.00τ.μ.
 Ύψος κεραιώτου μέχρι 2.40, από το 2.30.
 Πάτωμα υπνοδωματίου 55 τ.μ.
 Δερόφυτος 9.5 τ.μ.
 Εξωτερικό πάτωμα 25.5 τ.μ.

Περιήρωξη στο αλουμίνιο και γυαλί 1θψ.

HPL 9.00 τ.μ. εκ φθώρα



Additional information

Facilities

Aircondition, Split system

Parking, Covered

Storage

Childrens playground

Solar photovoltaic panels

Gated complex

Solar water heater

Features

Balcony

City view

Double glazing

En suite bathroom

Entrance hall

Guest WC

Mountain view

Next to green area

Quiet area

Shutters, electric

Utility room

Bath

Country view

Easy access to highway

En suite shower

Fitted wardrobes

Guestroom

Municipal water/sewage

Open plan

Separate dining area

Spacious rooms

Veranda

Bright

Door screen

Easy access to main roads

Entrance gate, automated

Garden

Kitchen appliances

Near amenities

Panoramic view

Shower

Tile flooring

Distances

Amenities

 500 m

Airport

 62 km

Sea

 4 km

Public transport

 1 km


Schools

 1 km

Contact us



Elena Sokil

 (+357) 95759512

 lenasokil0@gmail.com

