



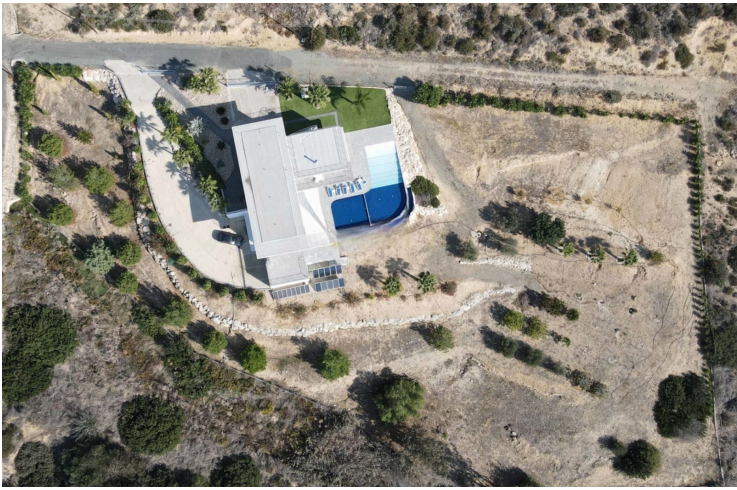
#14683

? Luxury 5-Bedroom Villa with Uninterrupted Sea & Mountain Views – Between Larnaca, Nicosia & Limassol (14683)

📍 Maroni, Larnaca

€1,250,000





Overview

Specifications

Bedrooms		Bathrooms		Covered	
 5		 5		 420 m ²	
Type	Detached Villa				
Showers	5				
Toilets	7				
Plot	7400 m ²				
Covered veranda	40 m ²				
Status	Resale				
Year of construction					2014
Title deed					Yes
Furnished					Partially furnished
Structure					Concrete
Facade					Concrete
Energy efficiency rating					 Certificate expected

Description

? Luxury 5-Bedroom Villa with Uninterrupted Sea & Mountain Views – Between Larnaca, Nicosia & Limassol (14683)

- ? Price: €1,250,000
- ? Location: Protected Green Area, near the Sea – Cyprus
- ? Year Built: 2014
- ? Type: Detached Luxury Villa
- ?? Bedrooms: 5 | ? Bathrooms: 5
- ?? Condition: Ultra-Modern / Excellent
- ? Title Deeds: Full & Clear

? Property Description

Experience the ultimate in modern Mediterranean living with this stunning five-bedroom detached villa, perfectly positioned in a protected green area ensuring absolute privacy, tranquility, and unobstructed views of the sea and surrounding hills.

This architectural masterpiece combines cutting-edge design with natural beauty, offering spacious open-plan interiors, high-end finishes, and abundant natural light.

Enjoy seamless indoor-outdoor living with a large infinity saltwater pool, roof garden, BBQ area, and landscaped gardens with fruit and olive trees — all overlooking the Mediterranean horizon.



Additional information

Facilities

Aircondition, Split system

Pool, Private, overflow

Heating, Underfloor

Storage

Parking, Covered

Features

Alarm system

Barbeque

Ceramic tiles

Door screen

Elevated

Energy efficient doors/windows

Garden, large

Indoor fireplace

Laundry room

Modern design

Panoramic view

Sea view

Veranda, front

Balcony, back

Bright

Connected to electric mains

Easy access to highway

En suite bathroom

Entrance gate

Ground floor bedroom

Internet

Lobby

Mountain view

Pressurized water system

Tile flooring

Balcony, front

CCTV

Distressed property

Easy access to main roads

En suite shower

Garden

Guest WC

Kitchen island

Luxury specifications

Next to green area

Quiet area

Veranda, back

Distances

Amenities



1 km

Airport



40 km

Sea



6 km

Public transport



4 km

Schools



2 km



Contact us



Giorgos Tsiampas

☎ (+357) 99982112

✉ infolextrusrealestate@gmail.com

