



#14612

MODERN 1 BEDROOM STUDIO APARTMENT, IN HISTORICAL CENTER, LIMASSOL (14612)

📍 Historical Center, Limassol





€254,000 +VAT





Overview

Specifications

Bedrooms		Bathrooms		Covered	
 Studio		 1		 30 m ²	
Type		Apartment			
Toilets		1			
Covered veranda		5 m ²			
Status		Key ready			
Year of construction		2025			
Furnished		Unfurnished			
Structure		Concrete			
Facade		Concrete			
Energy efficiency rating		 A+			

Description

Square Meters

Covered Area: 30 m²

Covered Veranda: 5 m²

Total Area: 35 m²

Features

This modern studio apartment, exclusively listed by Lextrus Real Estate, is located on the second floor of a three-story building with elevator access.

Completed in 2025, the residence offers:

Energy Efficiency: Rated A+ for outstanding performance

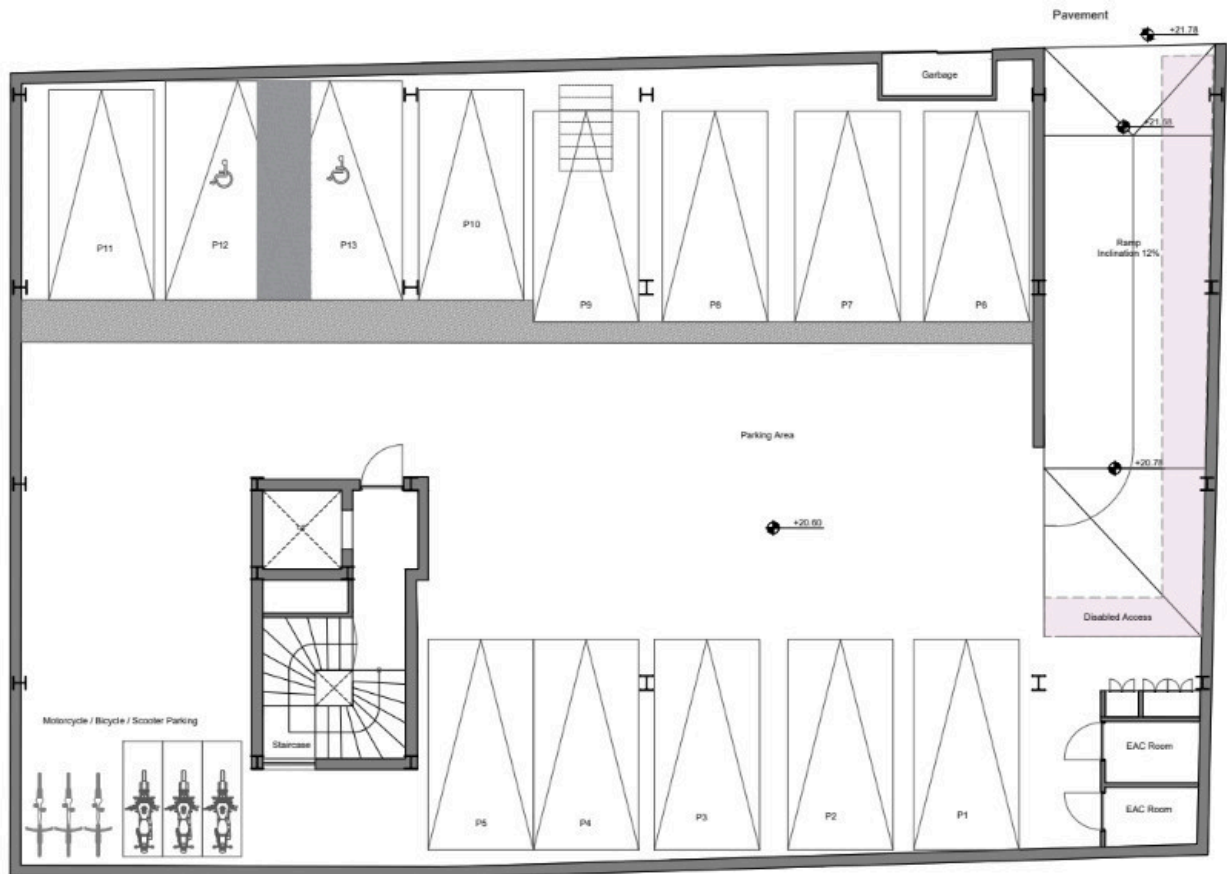
Private Swimming Pool: Ideal for relaxation year-round

Bathroom: 1, with contemporary fittings

Air Conditioning: Central system installed



Floor plans



Additional information

Facilities

Aircondition, Central system

Elevator

Heating, Central

Parking, Covered

Pool, Private, infinity

Features

Balcony

Bath

Bright

Double glazing

Easy access to highway

Easy access to main roads

High ceilings

Investment opportunity

Luxury specifications

Modern design

Near amenities

Pressurized water system

Quiet area

Rental potential

Sound insulation

Spacious rooms

Thermal insulation

Veranda

Walking distance to beach

Distances

Amenities



200 m

Airport



50 km

Sea



200 m

Public transport



200 m

Schools



500 m

Resort



500 m

Contact us



George Sergiou

📞 (+357) 94055813

✉️ info@lextrusrealestate.com

