



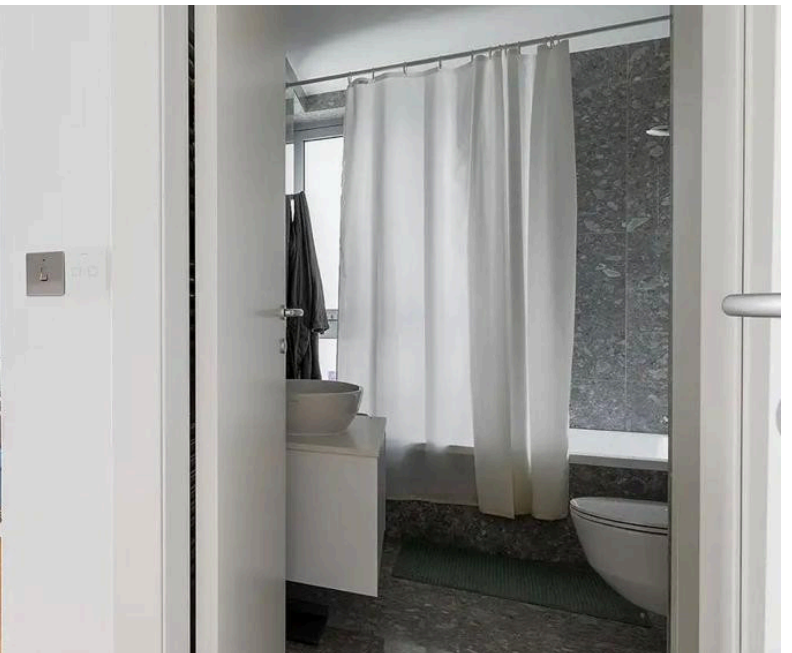
#14592

# High- end Seafront 2-Bedroom Apartment

📍 Agios Tychon Tourist Area, Limassol




€1,050,000





# Overview

## Specifications

Bedrooms		Bathrooms		Covered	
 2		 2		 97 m <sup>2</sup>	
Type		Apartment		Status	
Covered veranda		17 m <sup>2</sup>		Year of construction	
Basement		11 m <sup>2</sup>		Furnished	
Covered parking		11 m <sup>2</sup>		Energy efficiency rating	
				Resale	
				2020	
				Fully furnished	
				 A	

## Description

This modern, key-ready apartment offers comfort and style in the sought-after Tourist Area. Spanning 97m<sup>2</sup> of internal space , the property features two spacious bedrooms and two bathrooms. Located on the 7th floor of an 11-storey building with 2 elevators This home provides outstanding sea views and a bright, airy atmosphere.

The apartment comes fully furnished with contemporary décor and includes underfloor heating for year-round comfort. Energy efficiency class A ensures lower energy costs and sustainable living. Residents enjoy exclusive access to a communal swimming pool and a well-equipped gym, all within a secure, gated complex.

Set on the seafront, the property is just steps away from sandy beaches. The Tourist Area is famous for its vibrant lifestyle, offering a variety of restaurants, cafes, shops, and entertainment. Convenient highway access and nearby amenities make daily living easy and enjoyable.

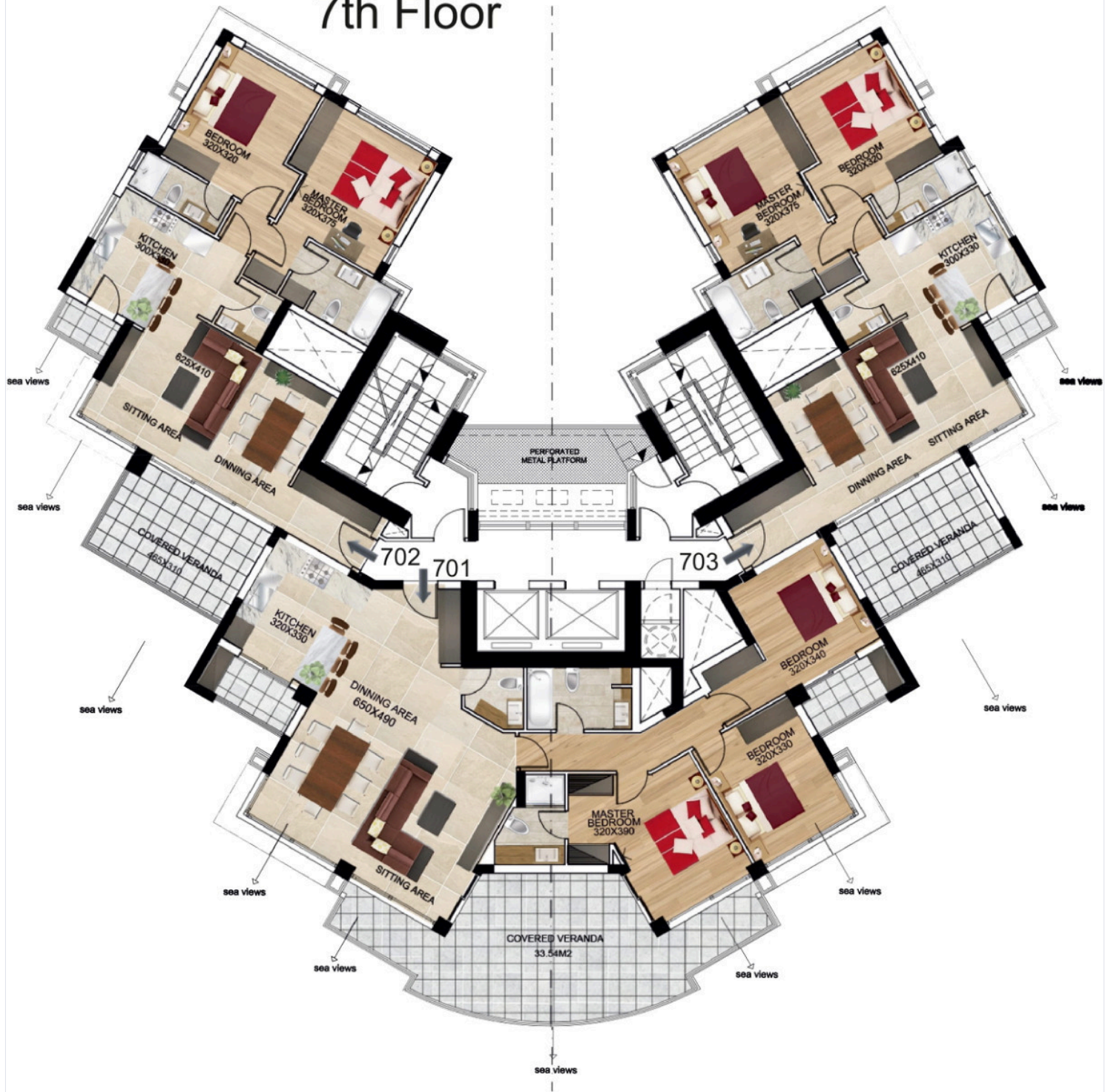
This apartment is perfect for those seeking a modern home in a prime location, ready for immediate move-in. For more information or to arrange a viewing, please contact Lextrus Real Estate.





# Floor plans

## 7th Floor



# Additional information

## Facilities

Aircondition, Split system

Gym

Pool, Communal

Solar water heater

Elevator

Heating, Underfloor

Sauna

Storage

Gated complex

Parking, Covered

Solar photovoltaic panels (provision)

Tennis court

## Features

Balcony

Door screen

Easy access to main roads

Entrance gate

Floor-to-ceiling windows

Kitchen appliances

Near amenities

Sea front

Triple glazing

Bathroom underfloor heating

Double glazing

Elevated

Entrance hall

Garden

Laminate flooring

Near bus route

Sea view

Veranda

Bright

Easy access to highway

En suite bathroom

Fitted wardrobes

Guest WC

Lobby

Open plan

Shower

## Distances

Amenities

 200 m

Airport

 57 km

Sea

 500 m

Public transport

 500 m

## Contact us



**Elena Sokil**

 (+357) 95759512

 lenasokil0@gmail.com

