

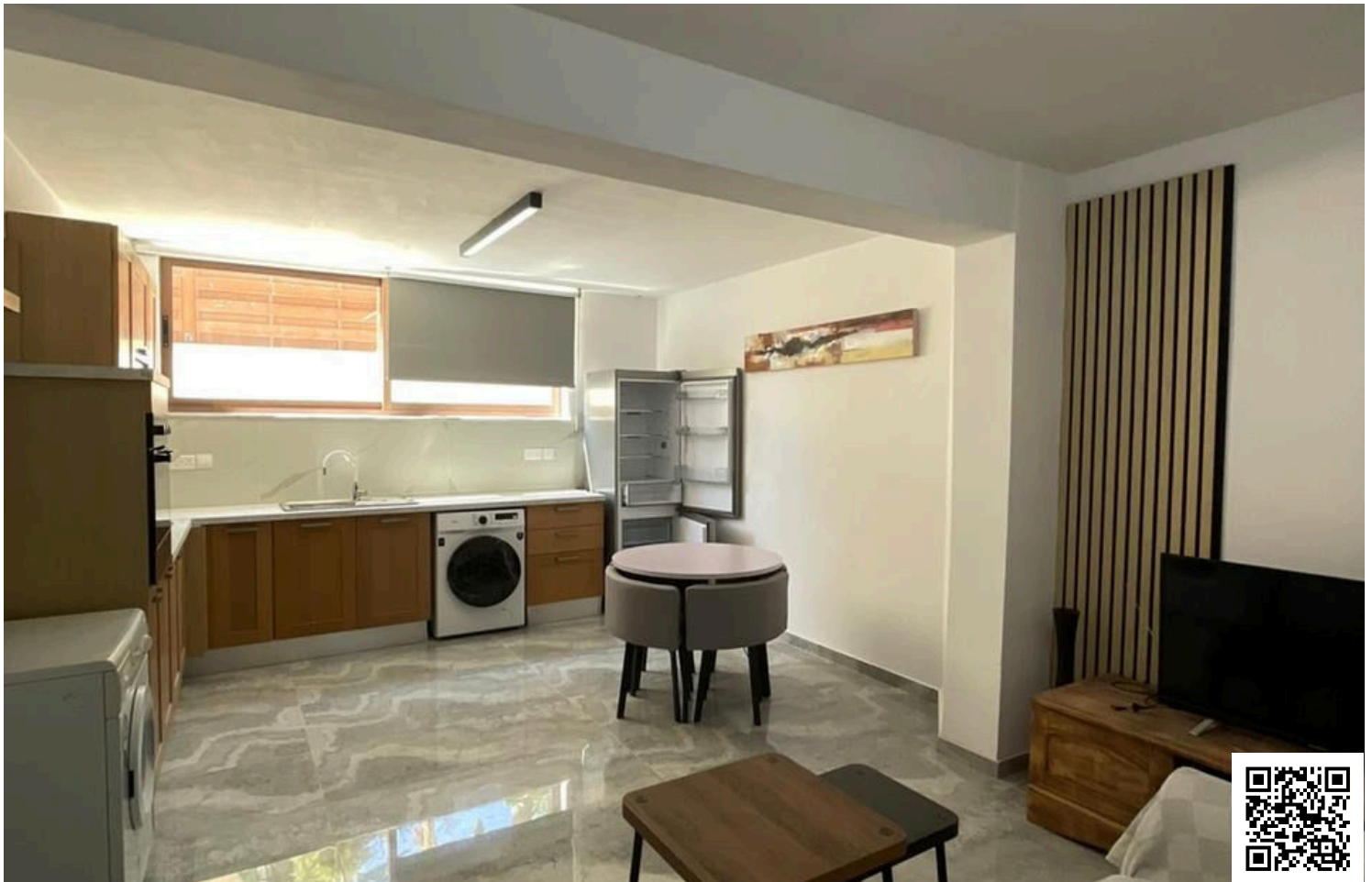


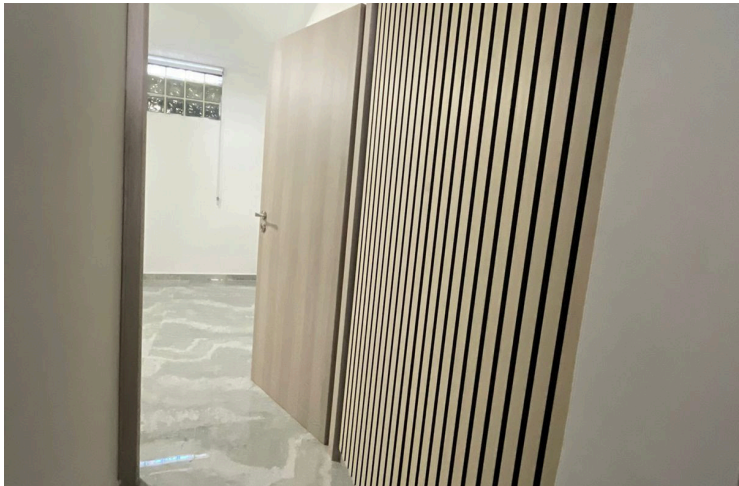
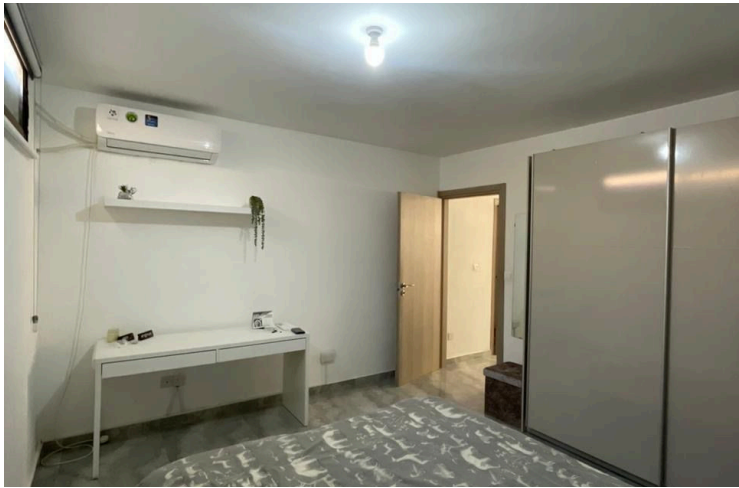
#14588

For Rent – 2-Bedroom Ground-Floor Apartment

📍 Pano Polemidia, Limassol




€1,300 /month





Overview

Specifications

Bedrooms		Bathrooms		Covered	
 2		 1		 70 m ²	
Type	Apartment			Furnished	Fully furnished
Status	Key ready			Structure	Concrete

Description

This key-ready, modern apartment offers comfortable living in the sought-after area of Pano Polemidia. With a generous internal space of 70 square meters, the layout features two spacious bedrooms and one sleek, contemporary bathroom. The property is located on the ground floor, making access easy and convenient for all residents.

Step inside to discover a fully furnished interior, complete with stylish furniture and all the essentials you need to move in right away.

Pano Polemidia is known for its excellent local amenities, peaceful surroundings, and quick access to major roads and shopping areas. Residents can enjoy a relaxed lifestyle while still being close to schools, parks, shops, and public transportation.

Whether you are a professional looking for a comfortable base or a small family seeking a new home, this property is ready to welcome you. For more information or to arrange a viewing, please contact Lextrus Real Estate.



| Additional information

Facilities

Aircondition, Split system

Parking, Uncovered

Features

Easy access to main roads

Garden

Next to green area

Quiet area

Contact us



Elena Sokil

📞 (+357) 95759512

✉️ lenasokil0@gmail.com

