



#14400

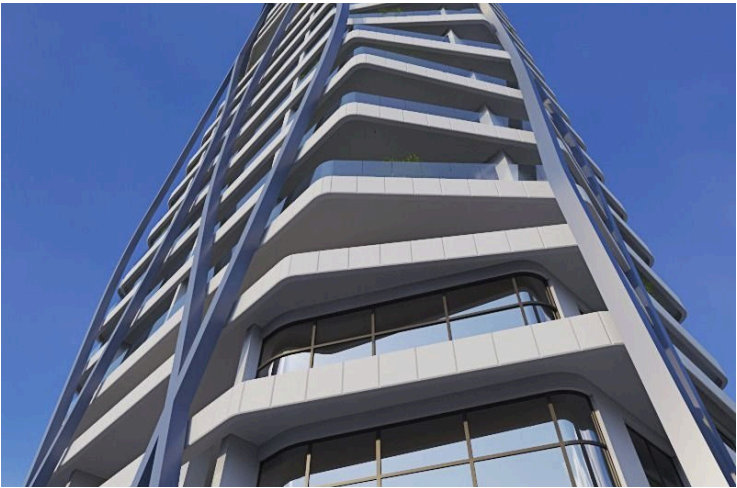
# 2 BEDROOM APARTMENT IN GERMASOGEIA, LIMASSOL (14400)

📍 Germasogeia Tourist Area, Limassol

€3,035,148 +VAT











# Overview

## Specifications

Bedrooms		Bathrooms		Covered	
 2		 2		 123.5 m <sup>2</sup>	
Type	Apartment	Year of construction	2027		
Toilets	2	Furnished	Unfurnished		
Covered veranda	50.5 m <sup>2</sup>	Structure	Concrete		
Garden	33.3 m <sup>2</sup>	Facade	Concrete		
Status	Under construction	Energy efficiency rating	 A+		

## Description

Covered Internal Area: 123.5 m<sup>2</sup>  
Covered Veranda: 50.5 m<sup>2</sup>  
Delivery Date: March 2027

### Property Features

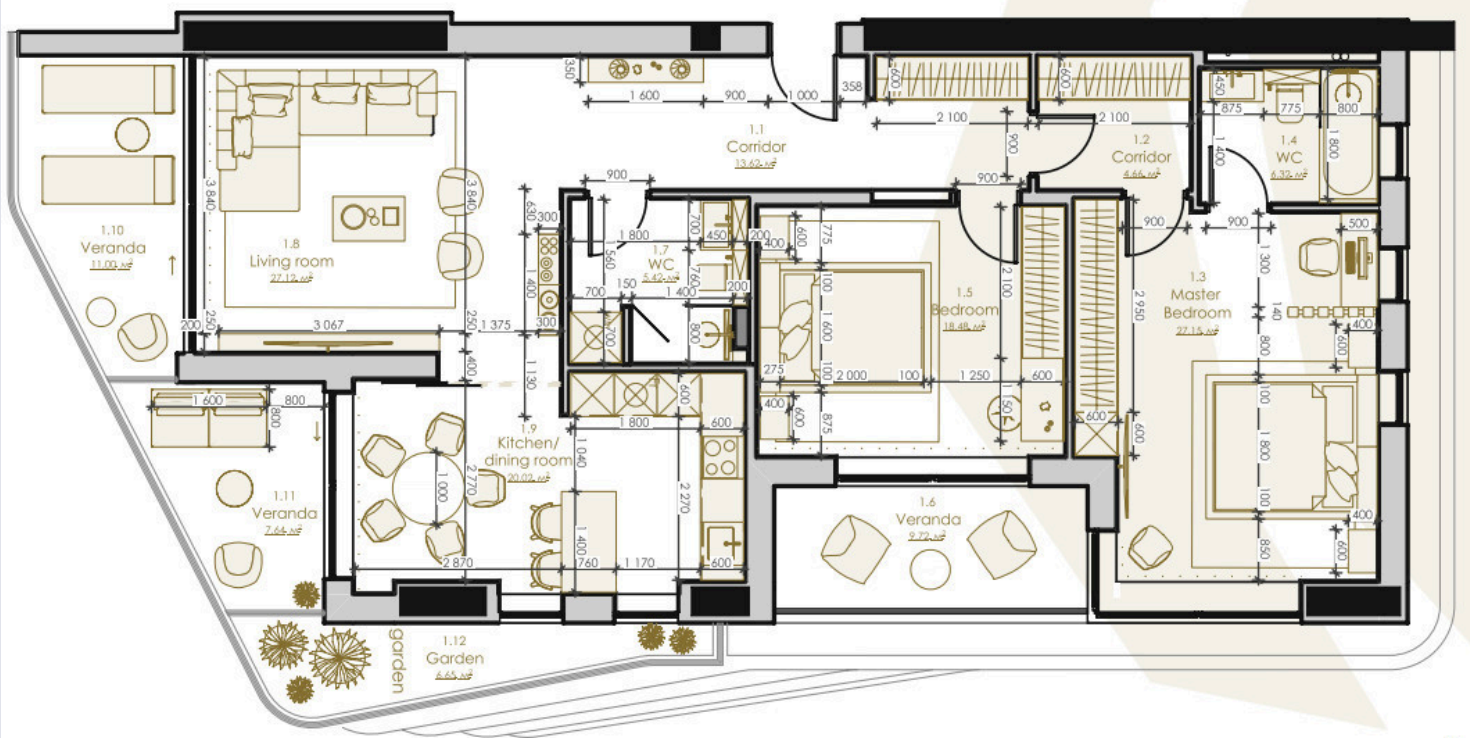
- 2 spacious bedrooms and 2 stylish bathrooms
- Open-plan living and dining area with floor-to-ceiling windows
- Large covered veranda offering beautiful outdoor space with sea views
- Underfloor heating for year-round comfort
- High energy efficiency (Class A+)
- Offered unfurnished — a blank canvas to personalize your home

### Complex Amenities

Secure, modern seventeen-story residential building



# Floor plans





# Additional information

## Facilities

Aircondition, Provision

Indoor pool, Communal

Solar water heater

Gym

Parking, Covered

Spa

Heating, Underfloor

Pool, Communal

## Features

24-hour security

Bright

Connected to electric mains

Easy access to main roads

Energy efficient doors/windows

Handicap accessible

Lobby

Near amenities

Quiet area

Sound insulation

Veranda

Balcony

CCTV

Double glazing

Electric car charger (provision)

Garden

High ceilings

Luxury specifications

Near bus route

Rental potential

Spacious rooms

Walking distance to beach

Bath

CCTV (provision)

Easy access to highway

En suite bathroom

Guest WC

Investment opportunity

Modern design

Parquet flooring

Sea view

Thermal insulation

## Distances

Amenities



150 m

Airport



50 km

Sea



200 m

Public transport



70 m

Schools



700 m

Resort




500 m

## Contact us



**George Sergiou**

 (+357) 94055813

 [info@lextrusrealestate.com](mailto:info@lextrusrealestate.com)

